

Property auction catalogue

**Monday 14th July, 2025
6.30pm start**

**DoubleTree by Hilton Hotel
Festival Park, Stoke-on-Trent
Staffordshire, ST1 5BQ**



Property auctions dates

**DoubleTree by Hilton Hotel,
Stoke-on-Trent, ST1 5BQ**

Auction Dates

15th September

20th October

1st December

Closing Date For Entries

1st August

12th September

24th October

Freehold & Leasehold Lots offered in conjunction with...



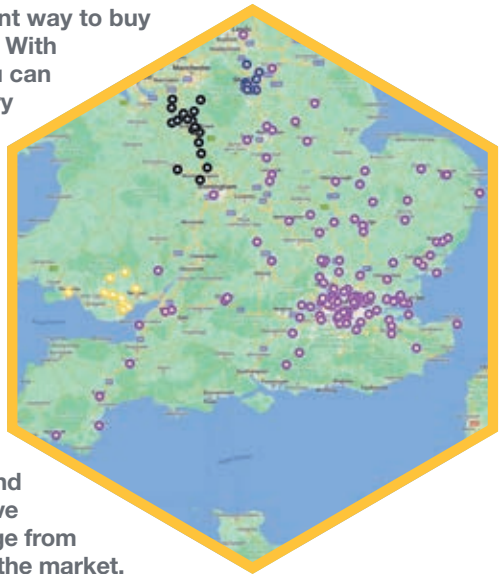
The region's **number 1** **property auctioneer** **butters john bee**^{bjb}



butters john bee Traditional Auctioneers with over 150 years' experience of selling **Residential & Commercial property and Land.**

Auction remains the fastest and most efficient way to buy and sell property in today's dynamic market. With the growing popularity of online bidding, you can now participate from anywhere in the country making the process more accessible than ever. Throughout 2024, our auction success has continued to soar, and we are pushing boundaries even further by working closely with our wider group and sister brands under the Spicerhaart umbrella, expanding our reach and offering greater nationwide coverage.

Whether you're buying or selling, you're in expert hands. Our award-winning Auction Department is supported by a strong network of Residential offices, Area Partners, and dedicated Commercial and Land & New Homes teams. This ensures you receive specialist advice and in-depth local knowledge from property professionals who truly understand the market.



One Stop Lot Shop - **Butters John Bee** introduce to **Just Mortgages** for your mortgage and protection requirements. Just Mortgages is a trading name of Just Mortgages Direct Limited which is an appointed representative of The Openwork Partnership, a trading style of Openwork Limited which is authorised and regulated by the Financial Conduct Authority. Just Mortgages Direct Limited Registered Office: Colwyn House, Sheepen Place, Colchester, Essex, C03 3LD. Registered in England No. 2412345.

YOUR PROPERTY MAY BE REPOSSESSED IF YOU DO NOT KEEP UP REPAYMENTS ON YOUR MORTGAGE.

Valuation can help you with your survey needs nationwide, and we can recommend a good local Conveyancer, we also have Residential and Commercial Lettings agencies.

Any queries about buying or selling at auction then contact the team on 0800 090 2200, or email auction@bjbmail.com, and we will be happy to help.

Proof of identity and address

All prospective bidders must register and provide proof of identity and address to the Auctioneers prior to the start of the sale.

Original documents **MUST** be provided.

Photocopies are **NOT** acceptable.

You will need to register before the auction starts if you are intending to bid, as we are required to verify anyone who offers, bids, or buys at butters john bee auctions.

In each case, for proof of ID we will need one item from List A, (if you cannot produce any of the items on list A, then you must produce two of the items on list B). For proof of address one item from List C (If an item is used from List B for the purposes of identity, the same item may NOT be used for the purposes of proof of address) Failure to produce the correct ID will mean you will NOT be eligible to bid on the night.

There are a few options available to you:

- Go to any of our 17 branches, or head office, with your original paperwork, we will then verify for you free of charge
- The Post Office can verify up to three forms of identification, there is however a charge for this service
- A professional body (solicitor, accountant etc.) can also certify your ID and directly send it on your behalf to auctions@bjbmail.com (please note these parties may make a charge directly to you)
- You can bring the relevant documents to the auction venue between 5.00pm and 6.30pm to register free of charge

If you intend to bid via the Internet, Telephone or Proxy, we will require this information prior to the day of the auction. If we do not receive certified identification, we will be unable to bid on your behalf.

If you are bidding on behalf of a company, you will also need to show a copy of the Certificate of Incorporation, a list of directors and a letter of authority on Company letterhead, signed by a company director, prior to signing the contract.

List A – proof of ID

- Current valid (signed) full UK Passport.
- Current valid (signed) overseas Passport.
- Current UK Photocard Driving Licence (provisional acceptable).
- Current EU Photocard Driving Licence.
- Current valid EEA Member State ID card.
- Current biometric residence permit issued by UK Border Agency.
- Current Firearms/Shotgun Certificate.

List B – proof of ID

- Bank, Building Society or Credit Union Statement dated within the last 3 months (not printed off the internet).
- Benefits or pensions notification letter confirming the right to benefit.
- Blue disabled drivers pass.
- Current UK paper driving licence.
- Local authority tax bill/council tax bill (we can only accept bills dated until the end of June of the year the client contract is signed).
- Medical Card/Certificate.
- National Insurance Card.
- UK Birth Certificate.
- Utility Bill/Utility Statement or Certificate/Letter from a supplier of utilities dated within the last 3 months.

List C – proof of address

- Bank Statement (dated in the last three months) - may be an e-copy
- Credit Card Statement (dated in the last three months) - may be an e-copy
- Council Tax bill (we can only accept bills dated until the end of June of the year the client contract is signed)
- Current mortgage statement (correspondence address and address the mortgage applies to must be the same)
- Current TV licence
- Driving licence showing current address (paper OR card version) (provisional acceptable) (not acceptable if used as ID)
- Homeowner's current home insurance policy schedule
- Home service provider bill, such as broadband or digital TV dated within the last three months
- Letter from the employer on company headed paper, signed and dated within the last three months (an email from a verified company email address is acceptable)
- Recent documentation confirming the applicant will be/is receiving local housing allowance or housing benefit
- Tenancy agreement signed and dated within the last six months {the customer being checked must be a named tenant on the tenancy agreement}
- Utility bill dated within the last three months
- Letter from the NHS writing to confirm the customer is living at the address
- Letter from bank to confirm the customer is living at the property - no other bank letter is acceptable

The following forms of proof of address are not acceptable:

- | | |
|---|-----------------------|
| 1. HM Revenue & Customs documents | 3. Mobile phone bills |
| 2. Letters from accountants or solicitors | 4. NHS medical card |

Property auction

buyer's guide

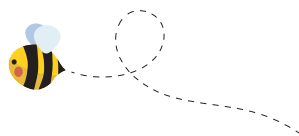
Buying at auction is becoming far more popular with the public, many of whom have never previously attended a property auction. We have drawn up some basic guidelines to ensure that clients maximise their opportunity to take advantage of such a wide variety of properties available at one venue.

- Think ahead, butters john bee hold regular auction sales with a catalogue printed some weeks in advance. Either buy a catalogue from one of our offices or download one FREE of charge from our website buttersjohnbee.com
- Read the catalogue carefully. Each of our properties carries a brief description. Read our details thoroughly and identify the properties you are interested in.
- Take a look at the property you are interested in. Contact the office listed for viewing arrangements or see the relevant viewing schedule.
- Take legal advice. Purchasing a property at auction is a firm commitment that carries the same legal implications as a signed contract by private treaty. In most cases we have copies of legal documents in our possession, or your solicitor may wish to contact the vendor's solicitor, these legal packs can often be downloaded from our website.
- Read the general conditions of sale at the rear of the catalogue.
- Get a copy of the addendum. These are available online and contain any late amendments, information or alterations.
- Plan ahead if you require mortgage assistance. Note that prospective purchasers should have the necessary mortgage advice well in advance of future auctions.
- Leave time to get a valuation done if required. Your mortgage finance may be reliant upon the results, not to mention your peace of mind.
- Organise your deposit before the auction. We will ask for a deposit 10% of the hammer price (Subject to a minimum of £3,000) once you are the winning bidder, payable on signing the contracts on the day of the auction sale. Your Bank or building Society should be made aware of this. The balance of the monies will normally be due within 20 business days from exchange. In addition a buyers administration fee will be applicable to each lot purchased, as specified in the individual property details (still applicable if purchased Prior or Post auction) Credit cards cannot be used for the 10% deposit payment, we can accept payment via Debit card, BACS or cheque.
- Make sure the Auctioneer has your bid, by clearly indicating with catalogue or hand.
- Ensure that you have registered with us before the auction starts, and supplied your two forms of identification. You can do this on the night of the auction, just arrive a bit early to give yourself enough time, or you can go into any of our 17 High Street branches prior to the sale and they will certify you ID free of charge. Original documents MUST be provided, photocopies are NOT acceptable. We will also accept certified ID sent direct from a solicitor or professional body.

- Check that the properties included in the catalogue will be offered on the day of the sale. Some may be withdrawn, and some may be sold prior to auction.
- Keep calm. Our Auctioneers understand the pressure that first time auction buyers can experience in the sale room, and will be as helpful as possible.
- Arrive in plenty of time. It is useful to get some knowledge of how sales are conducted by seeing other lots being sold.
- If the lot you're bidding for fails to make its reserve it may be that the vendor will decide to accept your bid later so make sure you leave your details with us.
- Be ready to sign immediately when the hammer falls. We shall have a copy of the contract available soon after the hammer falls.
- Be positive, with the right forward planning and research you will find an auction a speedy and simple way of buying a property.
- This catalogue contains details about properties being sold at auction. Those details are subject to change up to and including the day of the auction. Please check our website regularly at buttersjohnbee.com and look out for any additional materials available on the day of the auction, in order to stay fully informed with the up to date information.
- Guide Price:** An indication of the seller's current minimum acceptable price at auction. The guide price or range of guide prices is given to assist consumers in deciding whether or not to pursue a purchase. It is usual, but not always the case, that a provisional reserve range is agreed between the seller and the auctioneer at the start of marketing. As the reserve is not fixed at this stage and can be adjusted by the seller at any time up to the day of the auction in the light of interest shown during the marketing period, a guide price is issued. This guide price can be shown in the form of a minimum and maximum price range within which an acceptable sale price (reserve) would fall, or as a single price figure within 10% of which the minimum acceptable price (reserve) would fall. A guide price is different to a reserve price (see separate definition). Both the guide price and the reserve price can be subject to change up to and including the day of the auction.
- Reserve Price:** the seller's minimum acceptable price at auction and the figure below which the auctioneer cannot sell. The reserve price is not disclosed and remains confidential between the seller and the auctioneer. Both the guide price and the reserve price can be subject to change up to and including the day of the auction.

Join the **bjb** hive with our **FREE Lettings Switch Service**

Call Kyle mellor on **01782 211120** or
e-mail **kyleMellor@bjbmail.com** to find
out more.



Order of sale

(unless previously sold or withdrawn, please check the Addendum online for updates)

**DoubleTree by Hilton Hotel, Festival Park,
Stoke-on-Trent, Staffordshire, ST1 5BQ**

Monday 14th July 2025 at 6.30pm



- 1 291 Furlong Road, Tunstall, Stoke-on-Trent, Staffordshire, ST6 5UP
- 2 113 Walthall Street, Crewe, Cheshire, CW2 7LB
- 3 303 Ford Green Road, Norton, Stoke-On-Trent, Staffordshire, ST6 8LT
- 4 25 Hassam Avenue, Newcastle-under-Lyme, Staffordshire, ST5 9ET
- 5 257 Station Road, Winsford, Cheshire, CW7 3DQ
- 6 Flat 5 Howgate House, 3 Flat 5, Howgate House, 3, Wellington Road, Dewsbury, West Yorkshire, WF13 1HF
- 7 26 Hammond Street, Crewe, Cheshire, CW2 7PG
- 8 66 First Avenue, Kidsgrove, Stoke-On-Trent, Staffordshire, ST7 1DW
- 9 83 Wilding Road, Ball Green, Stoke-on-Trent, Staffordshire, ST6 8BQ
- 10 Flat 9, Lyndale Court Bold Street, Fleetwood, Lancashire, FY7 6HW
- 11 70 Edleston Road, Crewe, Cheshire, CW2 7HD
- 12 Land at Oak Street, Birches Head ST1 6PG
- 13 126 Gresty Road, Crewe, Cheshire, CW2 6EF
- 14 Dale Cottage Leadendale Lane, Rough Close, Stoke-on-Trent, Staffordshire, ST3 7NL
- 15 26 Gresty Road, Crewe, Cheshire, CW2 6DY
- 16 74 High Street, Cheadle, Stoke-on-Trent, Staffordshire, ST10 1AJ
- 17 70 Church Street, Wood Lane, Stoke-On-Trent, Staffordshire, ST7 8PE
- 18 15 Hill Street, Stoke ST4 1NL
- 19 10 Rullerton Road, Wallasey, Merseyside, CH44 5XQ
- 20 220 - 224 London Road, Stoke, Stoke-On-Trent, Staffordshire, ST4 5RH
- 21 92 Gainsborough Road, Crewe, Cheshire, CW2 7PL
- 22 1 Woodside Place, Milton, Stoke-on-Trent, Staffordshire, ST2 7BH
- 23 27 Third Avenue, Kidsgrove, Stoke-on-Trent, Staffordshire, ST7 1BY
- 24 Former Freebird P.H, 96 Liverpool Road, Newcastle-under-Lyme, ST5 2AX
- 25 86 Mill Street, Crewe, Cheshire, CW2 7AR
- 26 32 Moffatt Way, Silverdale, Newcastle-under-Lyme, Staffordshire, ST5 6RD
- 27 60 Lansdowne Road, Crewe, Cheshire, CS1 5LL
- 28 349 Leek Road, Hanley, Stoke-on-Trent, Staffordshire, ST4 2BU
- 29 Land & Premises at School Street, Trent Vale, Stoke-on-Trent, ST4 5RE
- 30 34 Melrose Road, Norwich, Norfolk, NR4 7PN
- 31 2 Monument Lane, Tittensor, Stoke-on-Trent, Staffordshire, ST12 9JH
- 32 8 St John Street, Wellington, Telford, Shropshire, TF1 1JZ

- 33 45 Princes Street, Nuneaton, Warwickshire, CV11 5NW
- 34 Regent House Outcrough Road, Stoke-on-Trent, Staffordshire, ST8 7QH
- 35 47 London Road, Chesterton, Newcastle-under-Lyme, Staffordshire, ST5 7EL
- 36 103 William Road, Kidsgrove, Stoke-on-Trent, Staffordshire, ST7 4BT
- 37 Land at Lime Tree Road, Codsall, Wolverhampton, WV8 1NX
- 38 19 Winghouse Lane, Tittensor, Stoke-on-Trent, Staffordshire, ST12 9HW
- 39 Flat 70 The Hicking Building Queens Road, Nottingham, NG2 3BU
- 40 134B Uttoxeter New Road, Derby, Derbyshire, DE22 3JB
- 41 Land at Barrie Gardens, Talke, Stoke on Trent ST7 1PB
- 42 16 Market Drayton Road, Loggerheads, Market Drayton, Shropshire, TF9 4BT
- 43 56 Piccadilly Hanley, Stoke-On-Trent, Staffordshire, ST1 1EG
- 44 Flats A, B and C, 480-482 Heath End Road, Nuneaton, Warwickshire, CV10 7HE
- 45 Apartment 23 Alexandra House, 47 Rutland Street, Leicester, LE1 1SE
- 46 49 Ernest Street, Crewe, Cheshire, CW2 6JE
- 47 12 Bew Street, Norton in the Moors, Stoke-on-Trent, Staffordshire, ST6 8JG
- 48 7 Moran Road, Knutton, Newcastle-under-Lyme, Staffordshire, ST5 6EX
- 49 Yew Tree Cottage Main Road, Betley, Crewe, Cheshire, CW3 9AD
- 50 129 Bucknall New Road, Hanley, Stoke-on-Trent, Staffordshire, ST1 2BG
- 51 Land Stock Lane Wybunbury CW5 7EX
- 52 13 Needwood Drive, Wolverhampton, WV4 6BT
- 53 Land at High Street, Newchapel, Stoke-on-Trent, ST7 4PT
- 54 33 Langford Road, Bucknall, Stoke-on-Trent, Staffordshire, ST2 9EZ
- 55 109 Weaver Street, Winsford, Cheshire, CW7 4AA
- 56 6 Orme Road, Newcastle-under-Lyme, Staffordshire, ST5 2ND
- 57 3 Red Lion Close, Talke, Stoke on Trent, Staffordshire, ST7 1SZ
- 58 32 Clifton Avenue, Crewe, Cheshire, CW2 7PZ
- 59 30 Repington Road, Sneyd Green, Stoke-On-Trent, Staffordshire, ST1 6JT
- 60 349 West Street, Crewe, Cheshire, CW1 3HY

**Is your property
suitable for sale
by auction?**

Email auction@bjbmail.com to organise a
FREE and honest appraisal of your property.

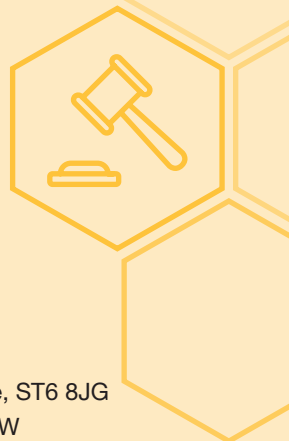


Order of sale (in alphabetical order)

(unless previously sold or withdrawn, please check the Addendum online for updates)

**DoubleTree by Hilton Hotel, Festival Park,
Stoke-on-Trent, Staffordshire, ST1 5BQ**

Monday 14th July 2025 at 6.30pm



- 41 Land at Barrie Gardens, Talke, Stoke on Trent ST7 1PB
- 47 12 Bew Street, Norton in the Moors, Stoke-on-Trent, Staffordshire, ST6 8JG
- 10 Flat 9, Lyndale Court Bold Street, Fleetwood, Lancashire, FY7 6HW
- 50 129 Bucknall New Road, Hanley, Stoke-on-Trent, Staffordshire, ST1 2BG
- 17 70 Church Street, Wood Lane, Stoke-On-Trent, Staffordshire, ST7 8PE
- 58 32 Clifton Avenue, Crewe, Cheshire, CW2 7PZ
- 11 70 Edleston Road, Crewe, Cheshire, CW2 7HD
- 46 49 Ernest Street, Crewe, Cheshire, CW2 6JE
- 8 66 First Avenue, Kidsgrove, Stoke-On-Trent, Staffordshire, ST7 1DW
- 6 Flat 5 Howgate House, 3 Flat 5, Howgate House, 3, Wellington Road, Dewsbury, West Yorkshire, WF13 1HF
- 3 303 Ford Green Road, Norton, Stoke-On-Trent, Staffordshire, ST6 8LT
- 1 291 Furlong Road, Tunstall, Stoke-on-Trent, Staffordshire, ST6 5UP
- 21 92 Gainsborough Road, Crewe, Cheshire, CW2 7PL
- 15 26 Gresty Road, Crewe, Cheshire, CW2 6DY
- 13 126 Gresty Road, Crewe, Cheshire, CW2 6EF
- 7 26 Hammond Street, Crewe, Cheshire, CW2 7PG
- 4 25 Hassam Avenue, Newcastle-under-Lyme, Staffordshire, ST5 9ET
- 44 Flats A, B and C, 480-482 Heath End Road, Nuneaton, Warwickshire, CV10 7HE
- 16 74 High Street, Cheadle, Stoke-on-Trent, Staffordshire, ST10 1AJ
- 53 Land at High Street, Newchapel, Stoke-on-Trent, ST7 4PT
- 18 15 Hill Street, Stoke ST4 1NL
- 54 33 Langford Road, Bucknall, Stoke-on-Trent, Staffordshire, ST2 9EZ
- 27 60 Lansdowne Road, Crewe, Cheshire, CS1 5LL
- 14 Dale Cottage Leadendale Lane, Rough Close, Stoke-on-Trent, Staffordshire, ST3 7NL
- 28 349 Leek Road, Hanley, Stoke-on-Trent, Staffordshire, ST4 2BU
- 37 Land at Lime Tree Road, Codsall, Wolverhampton, WV8 1NX
- 24 Former Freebird P.H, 96 Liverpool Road, Newcastle-under-Lyme, ST5 2AX
- 35 47 London Road, Chesterton, Newcastle-under-Lyme, Staffordshire, ST5 7EL
- 20 220 - 224 London Road, Stoke, Stoke-On-Trent, Staffordshire, ST4 5RH
- 49 Yew Tree Cottage Main Road, Betley, Crewe, Cheshire, CW3 9AD
- 42 16 Market Drayton Road, Loggerheads, Market Drayton, Shropshire, TF9 4BT
- 30 34 Melrose Road, Norwich, Norfolk, NR4 7PN

- 25 86 Mill Street, Crewe, Cheshire, CW2 7AR
- 26 32 Moffatt Way, Silverdale, Newcastle-under-Lyme, Staffordshire, ST5 6RD
- 31 2 Monument Lane, Tittensor, Stoke-on-Trent, Staffordshire, ST12 9JH
- 48 7 Moran Road, Knutton, Newcastle-under-Lyme, Staffordshire, ST5 6EX
- 52 13 Needwood Drive, Wolverhampton, WV4 6BT
- 12 Land at Oak Street, Birches Head ST1 6PG
- 56 6 Orme Road, Newcastle-under-Lyme, Staffordshire, ST5 2ND
- 34 Regent House Outclough Road, Stoke-on-Trent, Staffordshire, ST8 7QH
- 43 56 Piccadilly Hanley, Stoke-On-Trent, Staffordshire, ST1 1EG
- 33 45 Princes Street, Nuneaton, Warwickshire, CV11 5NW
- 39 Flat 70 The Hicking Building Queens Road, Nottingham, NG2 3BU
- 57 3 Red Lion Close, Talke, Stoke on Trent, Staffordshire, ST7 1SZ
- 59 30 Repington Road, Sneyd Green, Stoke-On-Trent, Staffordshire, ST1 6JT
- 19 10 Rullerton Road, Wallasey, Merseyside, CH44 5XQ
- 45 Apartment 23 Alexandra House, 47 Rutland Street, Leicester, LE1 1SE
- 29 Land & Premises at School Street, Trent Vale, Stoke-on-Trent, ST4 5RE
- 32 8 St John Street, Wellington, Telford, Shropshire, TF1 1JZ
- 5 257 Station Road, Winsford, Cheshire, CW7 3DQ
- 51 Land Stock Lane Wybunbury CW5 7EX
- 23 27 Third Avenue, Kidsgrove, Stoke-on-Trent, Staffordshire, ST7 1BY
- 40 134B Uttoxeter New Road, Derby, Derbyshire, DE22 3JB
- 2 113 Walthall Street, Crewe, Cheshire, CW2 7LB
- 55 109 Weaver Street, Winsford, Cheshire, CW7 4AA
- 60 349 West Street, Crewe, Cheshire, CW1 3HY
- 9 83 Wilding Road, Ball Green, Stoke-on-Trent, Staffordshire, ST6 8BQ
- 36 103 William Road, Kidsgrove, Stoke-on-Trent, Staffordshire, ST7 4BT
- 38 19 Winghouse Lane, Tittensor, Stoke-on-Trent, Staffordshire, ST12 9HW
- 22 1 Woodside Place, Milton, Stoke-on-Trent, Staffordshire, ST2 7BH
- 22 1 Woodside Place, Milton, Stoke-on-Trent, Staffordshire, ST2 7BH

Landlords.

**Get tenants buzzing
into your properties.**

Call Andy Townsend on **01782 211144**
or e-mail **andytownsend@bjbmail.com**
to find out more.





Proof of identity and address

A Buyers Administration Fee will be payable on exchange, as specified on the property listing, is applicable to all lots sold at, pre or post auction.

All potential bidders will need to register prior to the auction, and provide proof of identity and address to enable you to bid at our sales. (See 'Proof of Identity' at front of the catalogue).

If the buyer's details are different from the successful bidder's, then the buyer will also be required to submit their details as above.

If the successful bidder is buying on behalf of a company we also require a letter from that company on their letterhead authorising the bidder to bid on their behalf, the bidder will still be required to produce their details as above.

Every buyer will be photographed at the auction before the contract is signed.

We offer a whole range of no obligation advice. **Book your appointment now.**

Just mortgage and protection advice

- ✓ First Time Buyers
- ✓ House Purchases
- ✓ Remortgage
- ✓ Capital Raising
- ✓ Self Employed
- ✓ Let To Buy*
- ✓ Shared Ownership
- ✓ Self Build mortgages
- ✓ Debt Consolidation
- ✓ Buy To Let*
- ✓ Life Insurance
- ✓ Critical Illness Cover
- ✓ Income Protection
- ✓ Buildings & Contents Insurance
- ✓ Accident & Sickness Cover

www.justmortgages.co.uk

THINK CAREFULLY BEFORE SECURING OTHER DEBTS
AGAINST YOUR HOME/PROPERTY. YOUR HOME/
PROPERTY MAY BE REPOSSESSED IF YOU DO NOT KEEP
UP REPAYMENTS ON YOUR MORTGAGE

**Just
Mortgages**

*Some buy to let and let to buy mortgages are not regulated by the Financial Conduct Authority.

Approved by The Openwork Partnership on 06/04/2023.





Bid live online!

All our sales are broadcast live in conjunction with Essential Information Group.

What does the service cost?

Nothing! It's free, you pay the same as any buyer who attends the auction.

Can I just watch?

Yes, many people use the service just to watch the auction.

How does the bidding work?

You are in complete control. The dashboard will show you the current highest bid, and the amount the Auctioneer is looking for for the next bid, if you want to offer that amount simply hit the Bid button. When the hammer goes down the system will show if yours was the winning bid.

Can I bid on more than one property?

Yes of course, you just need to let us know when you register what Lots you are interested in so we can approve you to bid.

How does the auctioneer know I'm bidding?

The auctioneer has a monitor next to the rostrum that shows him your bid, and he can talk to you via the camera. Don't worry, you can see him but he can't see you!

What about the deposit?

If you are the successful bidder, please be ready for us to call once the hammer goes down to process a card payment for the 10% Deposit and the Buyers Administration fee.

Email auction@bjbmail.com for your registration form.

essential
information group

LOT
01

*Guide price
£46,000 plus

Scan or Click
for further
information.



291 Furlong Road, Tunstall, Stoke-on-Trent, Staffordshire, ST6 5UP

- Terraced house
- Two bedrooms
- In need of modernisation
- Freehold
- Council Tax Band - A
- EPC – TBC

Legal Representative

Robert Fieldhouse
Legal Practice Support Stoke Gov
T 01782 235814
E robert.fieldhouse@stoke.gov.uk

To apply contact:

Hanley bjb
T 01782 202600
E hanley@bjbmail.com

LOT
02

*Guide price
£81,000 plus

Scan or Click
for further
information.



113 Walthall Street, Crewe, Cheshire, CW2 7LB

- Mid-terrace house
- Two bedrooms
- In need of modernisation
- Freehold
- Council Tax Band - A
- EPC - TBC

Legal Representative
TBC

T
E

To apply contact:
Crewe bjb
T 01270 213541
E crewe@bjbmail.com

LOT
03

*Guide price
£69,000 plus

Scan or Click
for further
information.



It is suggested that potential purchaser's make their own enquiries of mortgage lenders as to whether the property is mortgageable prior to making a bid at auction.

303 Ford Green Road, Norton, Stoke-On-Trent, Staffordshire, ST6 8LT

- Semi-detached house
- Three bedrooms
- In need of modernisation
- Freehold
- Council Tax Band - A
- EPC – D

Legal Representative

Samiya Hashmi
Walters & Plaskitt
T 01782 819611
E Samiya@wpsolicitors.co.uk

To apply contact:

Hanley bjb
T 01782 202600
E hanley@bjbmail.com

LOT
04

*Guide price
£81,000 plus

Scan or Click
for further
information.



The seller is a registered social landlord and is therefore prohibited from selling a property to anyone who is an employee or director of the seller, or was in the last 12 months an employee or director, or is a close relative of such a person or an agent on their behalf.

25 Hassam Avenue, Newcastle-under-Lyme, Staffordshire, ST5 9ET

- End -townhouse
- Two bedrooms
- In need of modernisation
- Freehold
- Council Tax Band – A
- EPC – D

Legal Representative

Bruna Saavedra

Anthony Collins Solicitors

T 0121 212 7448

E Bruna.Saavedra@anthonicollins.com

To apply contact:

Newcastle bjb

T 01782 622155

E Newcastle@bjbmail.com

LOT
05

*Guide price
£76,000 plus

Scan or Click
for further
information.



257 Station Road, Winsford, Cheshire, CW7 3DQ

- Mid-terrace house
- Three bedrooms
- Spacious accommodation
- Freehold
- Council Tax Band – A
- EPC – E

Legal Representative

Joy Crawford
Longespe & Co
T 0161 2369403
E joy@longespe-solicitors.com

To apply contact:

Winsford bjb
T 01606 596444
E Winsford@bjbmail.com



GILBERT O' NEILL

CONSTRUCTION LTD

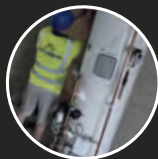
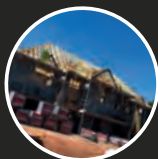


DOMESTIC DEVELOPMENT

- EXTENSIONS
- HMO CONVERSIONS
- RENOVATIONS
- ELECTRICS
- PLUMBING & HEATING
- JOINERY & PLASTERING
- BRICKWORK
- GROUNDWORKS

COMMERCIAL DEVELOPMENT

- EDUCATION
- RETAIL
- OFFICES
- HOSPITALITY
- PROJECT MANAGEMENT
- NEW BUILDS
- EV POINTS
- UTILITIES



"BUILDING STRONGER FOUNDATIONS FOR THE FUTURE"



01543 401200
07494710750

WWW.GILBERTONEILLCONSTRUCTIONLTD.COM
info@gilbertoneillconstruction.co.uk

LOT
06

*Guide price
£25,000 plus

Scan or Click
for further
information.



Flat 5, Howgate House, 3, Wellington Road, Dewsbury, West Yorkshire, WF13 1HF

- Basement flat
- One bedroom
- Situated close to Dewsbury Town Centre
- Leasehold – 75 years
- Council Tax Band - TBC
- EPC - E

Legal Representative

TBC

Taylor Rose Limited

T 01733 793945

E lendersales@taylor-rose.co.uk

To apply contact:

Auction bjb

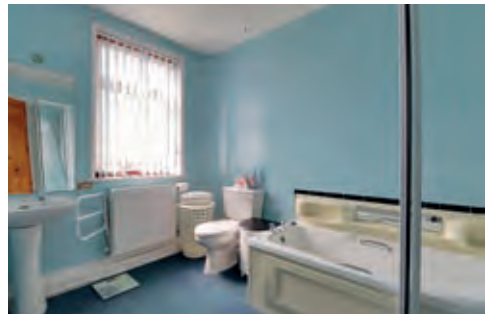
T 0800 090 2200

E auktion@bjbmail.com

LOT
07

*Guide price
£90,000 plus

Scan or Click
for further
information.



26 Hammond Street, Crewe, Cheshire, CW2 7PG

- Mid-terrace house
- Two bedrooms
- First floor bathroom
- In need of modernisation
- Freehold
- Council Tax Band - A
- EPC - D

Legal Representative

Tracy McVeigh
Hall Smith Wittingham
T 01270 212000
E tmcveigh@hswsolicitors.co.uk

To apply contact:

Crewe bjb
T 01270 213541
E crewe@bjbmail.com

LOT
08

*Guide price
£81,000 plus

Scan or Click
for further
information.



The seller is a registered social landlord and is therefore prohibited from selling a property to anyone who is an employee or director of the seller, or was in the last 12 months an employee or director, or is a close relative of such a person or an agent on their behalf.

66 First Avenue, Kidsgrove, Stoke-On-Trent, Staffordshire, ST7 1DW

- Semi-detached house
- Three bedrooms
- In need of modernisation
- Generous plot
- Freehold
- Council Tax Band - A
- EPC - D

Legal Representative

Bruna Saavedra

Anthony Collins Solicitors

T 0121 212 7448

E Bruna.Saavedra@anthonymcollins.com

To apply contact:

Kidsgrove bjb

T 01782 784442

E kidsgrove@bjbmail.com

LOT
09

*Guide price
£82,000 plus

Scan or Click
for further
information.



83 Wilding Road, Ball Green, Stoke-on-Trent, Staffordshire, ST6 8BQ

- Mid-terraced house
- Three bedrooms
- Great investment opportunity
- Freehold
- Council Tax Band - A
- EPC – D

Legal Representative

Kerry Dundas

Dundas Law

T 01782 528338

E kerry@dundaslaw.co.uk

To apply contact:

Hanley bjb

T 01782 202600

E hanley@bjbmail.com

LOT
10

*Guide price
£36,000 plus

Scan or Click
for further
information.



It is our understanding that this property cannot be purchased for Buy-to-Let purposes.

Flat 9 Lyndale Court, Bold Street, Fleetwood, Lancs, FY7 6HW

- Second floor apartment
- Two bedrooms
- In need of modernisation
- Private garage onsite
- Leasehold – 951 years
- Council Tax Band – B
- EPC – D

Legal Representative

Phillip Cotterill

Dryden Fairfax Solicitors

T 0113 368 8758

E philip.cotterill@drydenslaw.com

To apply contact:

Auction bjb

T 0800 090 2200

E auction@bjbmail.com

Positive LENDING

Your Auction Finance Partner



Established in 2008, Positive Lending has become the preferred specialist broker for bridging loans. facilitating over £2 billion in transactions and assisting thousands of clients in securing the most suitable loan options.

Offering exclusive rates, low fees, and a streamlined process, supporting every aspect of the process including valuation and legal representation.

Whether you are seeking an investment property or a residence for personal use, we can consider lending on a diverse array of properties and accommodating various personal situations, including those who are self-employed or retired.

You will engage directly with an experienced specialist who will provide clear decisions and maintain transparency regarding costs, enabling you to proceed with confidence.

Talk to our bridging specialists on 01202 850 830 (option 3)

THINK CAREFULLY BEFORE SECURING ANY DEBTS AGAINST YOUR HOME OR PROPERTY. YOUR HOME OR PROPERTY MAY BE REPOSSESSED IF YOU DO NOT KEEP UP REPAYMENTS ON YOUR MORTGAGE.

Positive Lending (UK) Limited, trading as 'Positive Lending', is Authorised and Regulated by the Financial Conduct Authority FRN 607682

Registered Office: Positive House, GP Centre, Yeoman Road, Ringwood, Hampshire BH24 3FF.
Registered in England and Wales No. 6700848

LOT
11

*Guide price
£75,000 plus

Scan or Click
for further
information.



70 Edleston Road, Crewe, Cheshire, CW2 7HD

- Mid-terrace commercial property
- Rear parking & workshop
- 735 sq ft (68.33 sq m)
- In need of modernisation
- Freehold
- Business Rates - £5,200 p/a
- EPC - TBC

Legal Representative

Lynne Thornton

Lynne Thornton Solicitors

T 01270 567 987

E legal@lynnethornton.co.uk

To apply contact:

Commercial bjb

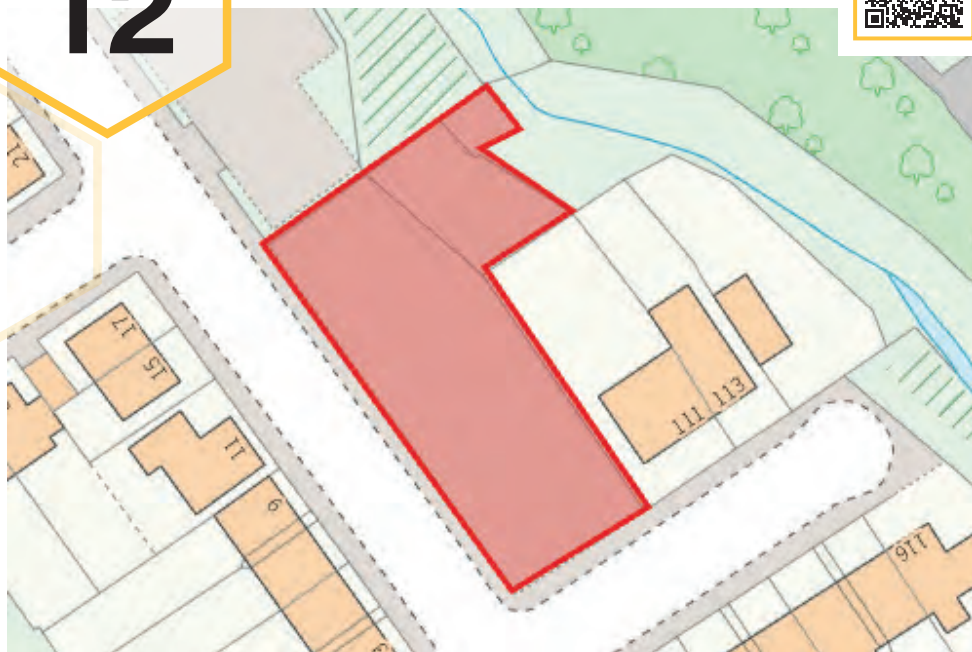
T 01782 212201

E commercial@bjbmail.com

LOT
12

*Guide price
£70,000 plus

Scan or Click
for further
information.



Land at Oak Street, Northwood, ST1 2NW

- Residential Development Site
- Full planning for 4 houses
- Ref: 69996/FUL
- Established residential area
- Good sale or rental area
- Site Area: 0.17 Acre (699m²)

Legal Representative

Lauren Astbury

Myers & Co

T 01782 491005

E lauren.astbury@myerssolicitors.co.uk

To apply contact:

Land & New Homes bjb

T 01782 211147

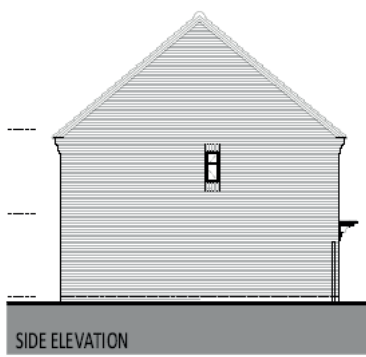
E residential-land@bjbmail.com



FRONT ELEVATION



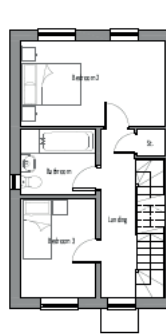
REAR ELEVATION



SIDE ELEVATION



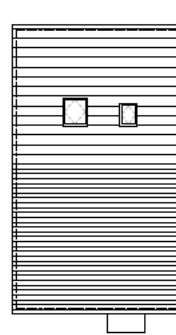
GROUND FLOOR PLAN
HOUSE TYPE C



FIRST FLOOR PLAN
HOUSE TYPE C



SECOND FLOOR PLAN
HOUSE TYPE C



ROOF PLAN
HOUSE TYPE C



LOT
13

*Guide price
£100,000 plus

Scan or Click
for further
information.



It is suggested that potential purchaser's make their own enquiries of mortgage lenders as to whether the property is mortgageable prior to making a bid at auction.

126 Gresty Road, Crewe, Cheshire, CW2 6EF

- Mid-terrace house
- Fore court & bay-fronted
- Three bedrooms
- In need of modernisation
- Freehold
- Council Tax Band - A
- EPC - D

Legal Representative

Michael Wright
Hall Smith Wittingham
T 01270 212000
E mwright@hswsolicitors.co.uk

To apply contact:

Crewe bjb
T 01270 213541
E crewe@bjbmail.com

LOT
14

*Guide price
£350,000 plus

Scan or Click
for further
information.



Dale Cottage, Leadendale Lane, Rough Close, Stoke-on-Trent, Staffordshire, ST3 7NL

- Detached house
- Three bedrooms
- Original features
- 2.5 acre paddock
- Out buildings
- Freehold
- Council Tax Band - C
- EPC - E

Legal Representative

Victoria Calladine

Woolliscrofts

T 01782 204000

E vcalladine@woolliscrofts.co.uk

To apply contact:

Longton bjb

T 01782 594777

E Longton@bjbmail.com

Unlock the potential of your developments with **butters** john bee^{bjb} land & new homes

Looking for a **new homes specialist** to deliver exceptional results? At **butters john bee New Homes**, we combine expertise with innovative strategies to make **your properties** stand out.

Why Choose **Us**?

- ✓ **Specialist Expertise:** Proven success in developments of all sizes.
- ✓ **Tailored Marketing:** Bespoke campaigns with high-impact visuals and virtual tours.
- ✓ **Dedicated Support:** Guidance from site acquisition to final sale.
- ✓ **Market Knowledge:** Accurate pricing and targeted buyer outreach.

Your Vision, **Our Drive**

We don't just sell homes – we bring your developments to life.
Let's build success together.



Carlos Hernandez

Regional Sales Director

07741 152287

carloshernandez@bjbmail.com



Paul Martin

Regional New Homes Sales Manager

07587 038921

paulmartin@bjbmail.com

LOT
15

*Guide price
£90,000 plus

Scan or Click
for further
information.



26 Gresty Road, Crewe, Cheshire, CW2 6DY

- Mid-terrace house
- Three bedrooms
- Currently tenanted @ £10,200 p/a
- Freehold
- Council Tax Band - A
- EPC - D

Legal Representative

Michael Wright
Hall Smith Whittingham
T 01270 212000
E mwright@hswsolicitors.co.uk

To apply contact:

Crewe bjb
T 01270 213541
E crewe@bjbmail.com

LOT
16

*Guide price
£200,000 plus

Scan or Click
for further
information.



74 High Street, Cheadle, Stoke-on-Trent, Staffordshire, ST10 1AJ

- Fully let investment
- High Street location
- Courtyard to rear
- Potential to expand (STPP)
- Income of £25,440 p/a
- Freehold
- EPC – C/D

Legal Representative

Tim Halliday

The Eric Whitehead Partnership

T 01538 755761

E timothyhalliday@ericwhitehead.co.uk

To apply contact:

Commercial bjb

T 01782 212201

E commercial@bjbmail.com

LOT
17

*Guide price
£128,000 plus

Scan or Click
for further
information.



The seller is a registered social landlord and is therefore prohibited from selling a property to anyone who is an employee or director of the seller, or was in the last 12 months an employee or director, or is a close relative of such a person or an agent on their behalf.

70 Church Street, Wood Lane, Stoke-On-Trent, Staffordshire, ST7 8PE

- Semi-detached house
- Two bedrooms
- In need of modernisation
- Freehold
- Council Tax Band - A
- EPC – C

Legal Representative

Bruna Saavedra

Anthony Collins Solicitors

T 0121 212 7448

E Bruna.Saavedra@anthonycollins.com

To apply contact:

Hanley bjb

T 01782 202600

E hanley@bjbmail.com

LOT
18

*Guide price
£250,000 plus

Scan or Click
for further
information.



15 Hill Street, Stoke-on-Trent, ST4 1NL

- Former Office/Care Facility
- Fully stripped ready for conversion
- Pre-app submitted for 6 apartments
- Full set of drawings available
- Great rental location close to all amenities
- GIA: 4090.29 (380m²)

Legal Representative

Lauren Astbury

Myers & co

T 01782 491005

E laurenastury@myerssolicitors.co.uk

To apply contact:

Land & New Homes bjb

T 01782 211147

E residential-land@bjbmail.com

LOT
19

*Guide price
£110,000 plus

Scan or Click
for further
information.



10 Rullerton Road, Wallasey, Merseyside, CH44 5XQ

- Mid-terraced house
- Two bedrooms
- In need of modernisation
- Freehold
- Council tax band – B
- EPC - D

Legal Representative

Cameron Ward

TLT LLP

T 0333 006 0000

E auctions@tlt.com

To apply contact:

Auction bjb

T 0800 090 2200

E auction@bjbmail.com

LOT
20

*Guide price
£80,000 plus

Scan or Click
for further
information.



220 - 224 London Road, Stoke, Stoke-On-Trent, Staffordshire, ST4 5RH

- Two storey property
- Double GF retail unit
- 5 FF rooms
- Rear yard
- Freehold
- Business Rates - £9,100 p/a
- EPC - C (66)

Legal Representative

Rebecca Parry

Tinsdills

T 01782 652369

E Rebecca.Parry@tinsdills.co.uk

To apply contact:

Commercial bjb

T 01782 212201

E commercial@bjbmail.com

Property Decarbonisation Specialists

Decarbonising the
affordable housing sector,
one house at a time.

Who We Are

Established in 2002, Broad Oak Group is a family owned business that provides comprehensive turnkey solutions to local authorities, social housing providers and private landlords.

Our objective is to facilitate the decarbonisation of the UK's housing stock through substantial home energy upgrades implemented on behalf of our clients.

MEES Support

We specialise in supporting landlords, property agents and rural estates in upgrading the EPC ratings of their properties.

Our solutions leverage government funded schemes ensuring compliance with energy efficiency guidelines (MEES) while enhancing property value and tenant satisfaction.

01782 529711
clients@broadoakgroup.com
www.broadoakgroup.com

**Alternatively,
scan the QR
code to submit a
contact form**



BROAD OAK
'Here to make you smile'

COST-FREE HEATING & INSULATION UPGRADES FOR LANDLORDS



ELIGIBILITY CRITERIA:

Eligibility criteria for landlords typically include property type, current energy performance ratings and alignment with funding program requirements to qualify for energy efficiency upgrades:

- Properties with an EPC rating of E-G or no EPC
- Tenants receiving government benefits, earning below £31,000 annually or with specific health conditions
- Properties must be tenant occupied, habitable and privately owned

TO FIND OUT MORE, CALL
01782 529711

LOT
21

*Guide price
£148,500 plus

Scan or Click
for further
information.



92 Gainsborough Road, Crewe, Cheshire, CW2 7PL

- Semi-detached house
- Three bedrooms
- In need of modernisation
- Freehold
- Council Tax Band - C
- EPC – E

Legal Representative

Jonathan Manning

Hibberts

T 01270 215117

E jhm@hibberts.com

To apply contact:

Crewe bjb

T 01270 213541

E crewe@bjbmail.com

LOT
22

*Guide price
£137,000 plus

Scan or Click
for further
information.



1 Woodside Place, Milton, Stoke-on-Trent, Staffordshire, ST2 7BH

- Detached house
- Two bedrooms
- In need of modernisation
- Freehold
- Council Tax Band - B
- EPC - E

Legal Representative

Emma Lanza

Clowes & Co

T 01782 284320

E Emma.Lanza@goddarddunbar.co.uk

To apply contact:

Hanley bjb

T 01782 202600

E hanley@bjbmail.com

LOT
23

*Guide price
£99,000 plus

Scan or Click
for further
information.



The seller is a registered social landlord and is therefore prohibited from selling a property to anyone who is an employee or director of the seller, or was in the last 12 months an employee or director, or is a close relative of such a person or an agent on their behalf.

Please be aware that there is a mine shaft located within 20 metres of the boundary of the property.

27 Third Avenue, Kidsgrove, Stoke-on-Trent, Staffordshire, ST7 1BY

- Semi-detached house
- Three bedrooms
- In need of modernisation
- Generous plot
- Freehold
- Council Tax Band - A
- EPC - C

Legal Representative

Bruna Saavedra

Anthony Collins Solicitors

T 0121 212 7448

E Bruna.Saavedra@anthonycollins.com

To apply contact:

Kidsgrove bjb

T 01782 784442

E kidsgrove@bjbmail.com

LOT
24

*Guide price
£200,000 plus



Former Freebird P.H, 96 Liverpool Road, Newcastle-under-Lyme, ST5 2AX

- Former Freebird Public House
- First floor 3 bedroom apartment
- Excellent prominent position off the A34
- Potential for alternative uses (office/showroom)
- Potential for residential conversion STPP
- Previous application for 6 new build apartments
- Floor Area: 3853 Sq.ft (358 Sq.m)

Legal Representative

Laura Pyatt
Beswicks Solicitors
T 01782 205000
E laura.pyatt@beswicks.com

To apply contact:

Land & New Homes bjb
T 01782 211147
E residential-land@bjbmail.com



LOT
25

*Guide price
£117,000 plus

Scan or Click
for further
information.



86 Mill Street, Crewe, Cheshire, CW2 7AR

- Mid-terrace house
- Three bedrooms
- First floor bathroom
- Previous used as 4 bed HMO
- Freehold
- Council Tax Band - A
- EPC - D

Legal Representative

Tracy Wilcocks
Goddard Dunbar
T 01782 284320
E tracy@goddarddunbar.co.uk

To apply contact:

Crewe bjb
T 01270 213541
E crewe@bjbmail.com

LOT
26

*Guide price
£81,000 plus

Scan or Click
for further
information.



The seller is a registered social landlord and is therefore prohibited from selling a property to anyone who is an employee or director of the seller, or was in the last 12 months an employee or director, or is a close relative of such a person or an agent on their behalf.

32 Moffatt Way, Silverdale, Newcastle-under-Lyme, Staffordshire, ST5 6RD

- End -townhouse
- Three bedrooms
- In need of modernisation
- Freehold
- Council Tax Band – A
- EPC – C

Legal Representative

Bruna Saavedra

Anthony Collins Solicitors

T 0121 212 7448

E Bruna.Saavedra@anthonycollins.com

To apply contact:

Newcastle bjb

T 01782 622155

E Newcastle@bjbmail.com

LOT
27

*Guide price
£162,000 plus



60 Lansdowne Road, Crewe, Cheshire, CW1 5LL

- Semi-detached house
- Three bedrooms
- Currently tenanted @ £TBC p/a
- Freehold
- Council Tax Band - B
- EPC – E

Legal Representative
Jonathan Manning
Hibberts
T 01270 215117
E jhm@hibberts.com

To apply contact:
Crewe bjb
T 01270 213541
E crewe@bjbmail.com

LOT
28

*Guide price
£100,000 plus

Scan or Click
for further
information.



349 Leek Road, Hanley, Stoke-on-Trent, Staffordshire, ST4 2BU

- Detached house
- Two bedrooms
- In need of modernisation
- Generous plot
- Freehold
- Council Tax Band - B
- EPC - TBC

Legal Representative

Hollie Brierwood

Tinsdills

T 01782 652300

E hollie.brierwood@tinsdills.co.uk

To apply contact:

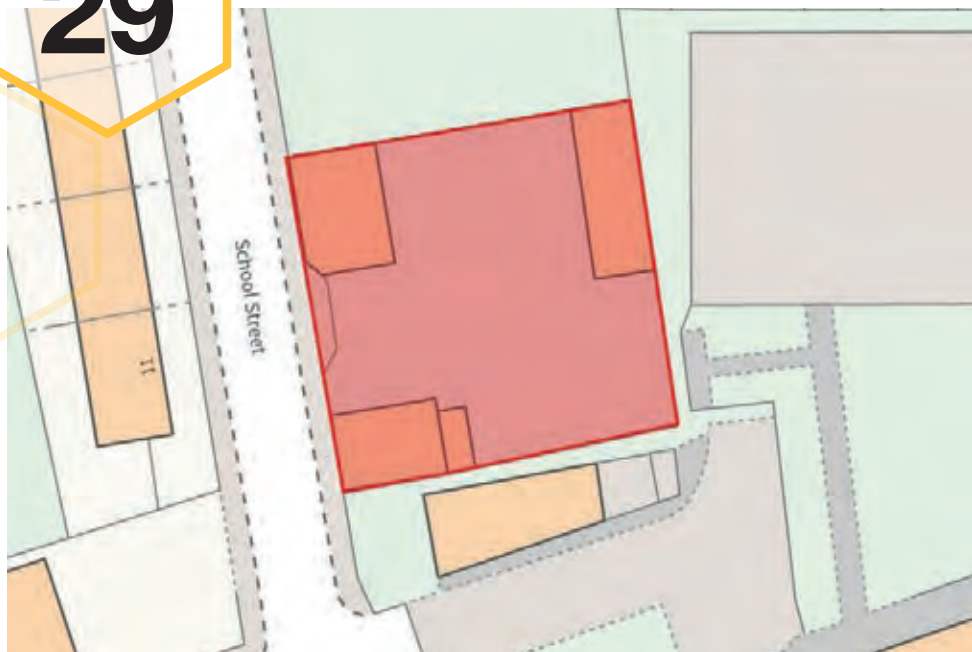
Hanley bjb

T 01782 202600

E hanley@bjbmail.com

LOT
29

*Guide price
£200,000 plus



Land & Premises at School Street, Trent Vale, Stoke-on-Trent, ST4 5RE

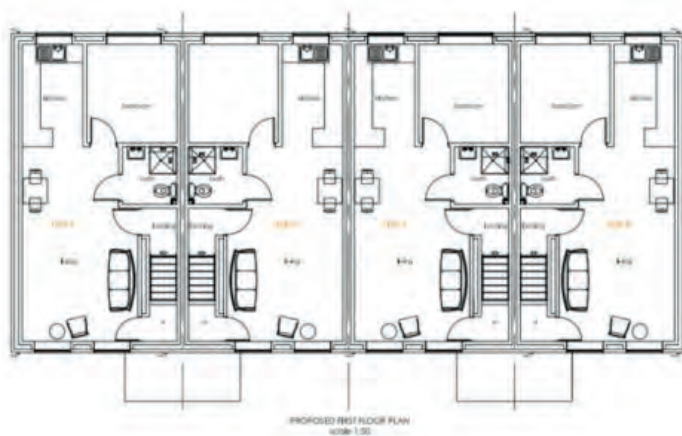
- Former Builders Yard with Storage Buildings
- Full Planning consent for;
- 8 x 1 Bedroom Apartments
- OR 4 x 3 Bedroom Terrace Houses
- Ref; 68739/FUL & 70806/FUL
- Site Area: 0.16 Acre (652m²)

Legal Representative

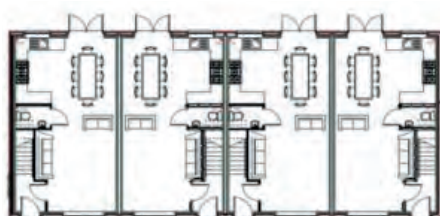
Glynn Buckley
Leadbeater & Kay
T 01782 201933
E glynn@leadbeaterkay.co.uk

To apply contact:

Land & New Homes bjb
T 01782 211147
E residential-land@bjbmail.com



Scheme 2 – 4 x 3 Bedroom Houses





Exclusive opportunities for investments of new build properties

Benefits of joining include:



Alerts for properties that match your investment criteria.



Early access to new build developments.



Monthly newsletters with analysis and insight of the UK investment market.



Email for more information or sign up via the QR code
landandnewhomes@spicerhaart.co.uk



LOT
30



*Guide price
£190,000



34 Melrose Road, Norwich, Norfolk, NR4 7PN

- Mid-terrace house
- Three bedrooms
- In need of modernisation
- Freehold
- Council Tax Band - B
- EPC - D

Legal Representative

Natalie Briggs

Spire Solicitors

T 01953 882864

E natalie.briggs@spiresolicitors.co.uk

To apply contact:

Norwich GT haart

T 01603 458400

E NorwichGT@spicerhaart.co.uk

LOT
31

*Guide price
£250,000 plus

Scan or Click
for further
information.



2 Monument Lane, Tittensor, Stoke-on-Trent, Staffordshire, ST12 9JH

- Terraced cottage
- Two bedrooms
- Full of character
- Off road parking & Workshop
- Freehold
- Council Tax Band – B
- EPC – D

Legal Representative
TBC

To apply contact:
Stafford bjb
T 01785 246000
E Stafford@bjbmail.com

LOT
32

*Guide price
£180,000 plus

Scan or Click
for further
information.



It is suggested that potential purchaser's make their own enquiries of mortgage lenders as to whether the property is mortgageable prior to making a bid at auction.

8 St John Street, Wellington, Telford, Shropshire, TF1 1JZ

- Detached house
- Three bedrooms
- In need of renovation & repair
- Freehold
- Council Tax Band – C
- EPC – F

Legal Representative

TBC

Lanyon Bowdler

T 01952 291222

E enquiries@lblaw.co.uk

To apply contact:

Telford bjb

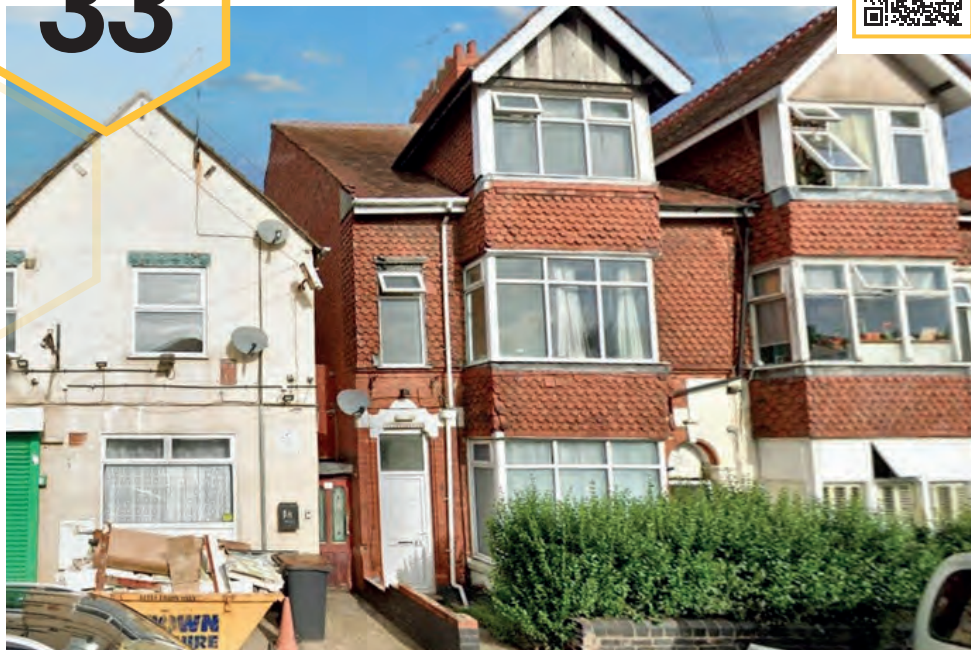
T 01952 204420

E Telford@bjbmail.com

LOT
33

*Guide price
£135,000 plus

Scan or Click
for further
information.



It is suggested that potential purchaser's make their own enquiries of mortgage lenders as to whether the property is mortgageable prior to making a bid at auction.

45, Princes Street, Nuneaton, Warwickshire, CV11 5NW

- Three storey house
- Believed to be converted into 9 bedsit flats
- Not inspected by the auctioneer
- Sold with mortgagee not in possession
- No access will be provided
- Freehold
- Council tax band – C
- EPC – TBC

Legal Representative

Cameron Ward
TLT LLP
T 0333 006 0000
E auctions@tlt.com

To apply contact:

Auction bjb
T 01782 211180
E auction@bjbmail.com

LOT
34

*Guide price
£55,000 plus

Scan or Click
for further
information.



It is suggested that potential purchaser's make their own enquiries of mortgage lenders as to whether the property is mortgageable prior to making a bid at auction.

Regent House, Outclough Road, Brindley Ford, Stoke-on-Trent, Staffordshire, ST8 7QH

- Former Commercial building
- Six Leasehold flats
- In need of renovation and repair
- Mortgagee not in possession
- Not inspected by the Auctioneer
- No access will be provided
- Council Tax Band – A
- EPC - TBC

Legal Representative

Cameron Ward

TLT LLP

T 0333 006 0000

E auctions@tlt.com

To apply contact:

Auctioner bjb

T 01782 211180

E auction@bjbmail.com

LOT
35

*Guide price
£70,000 plus

Scan or Click
for further
information.



47 London Road, Chesterton, Newcastle-under-Lyme, Staffordshire, ST5 7EL

- Two storey retail premises
- Side access & rear yard
- Some original features
- 954 sq ft
- Freehold
- Business Rates £5,000 p/a
- EPC – E (120)

Legal Representative

Michael Hayward
Knights Professional Services Limited
T 01782 619225
E michael.hayward@knights1759.co.uk

To apply contact:

Commercial bjb
T 01782 212201
E commercial@bjbmail.com

LOT
36

*Guide price
£99,000 plus

Scan or Click
for further
information.



The seller is a registered social landlord and is therefore prohibited from selling a property to anyone who is an employee or director of the seller, or was in the last 12 months an employee or director, or is a close relative of such a person or an agent on their behalf.

103 William Road, Kidsgrove, Stoke-on-Trent, Staffordshire, ST7 4BT

- Semi-detached house
- Two bedrooms
- In need of renovation and repair
- Generous plot
- Freehold
- Council Tax Band - A
- EPC - C

Legal Representative

Bruna Saavedra

Anthony Collins Solicitors

T 0121 212 7448

E Bruna.Saavedra@anthonycollins.com

To apply contact:

Kidsgrove bjb

T 01782 784442

E kidsgrove@bjbmail.com

LOT
37

*Guide price
£160,000 plus

Scan or Click
for further
information.



Land at Lime Tree Road, Codsall, Wolverhampton, WV8 1NX

- Land comprising 13 Domestic Garages
- Full Planning for 2 x Dormer Bungalows
- (REF: 25/00171/FUL)
- Established residential area
- Potential GDV: £600,000
- Site Area: 0.12Acre (485m²)

Legal Representative

Rhiannon Clark

MFG Solicitors

T 01562 820181

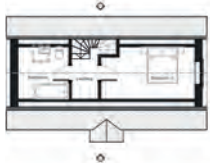
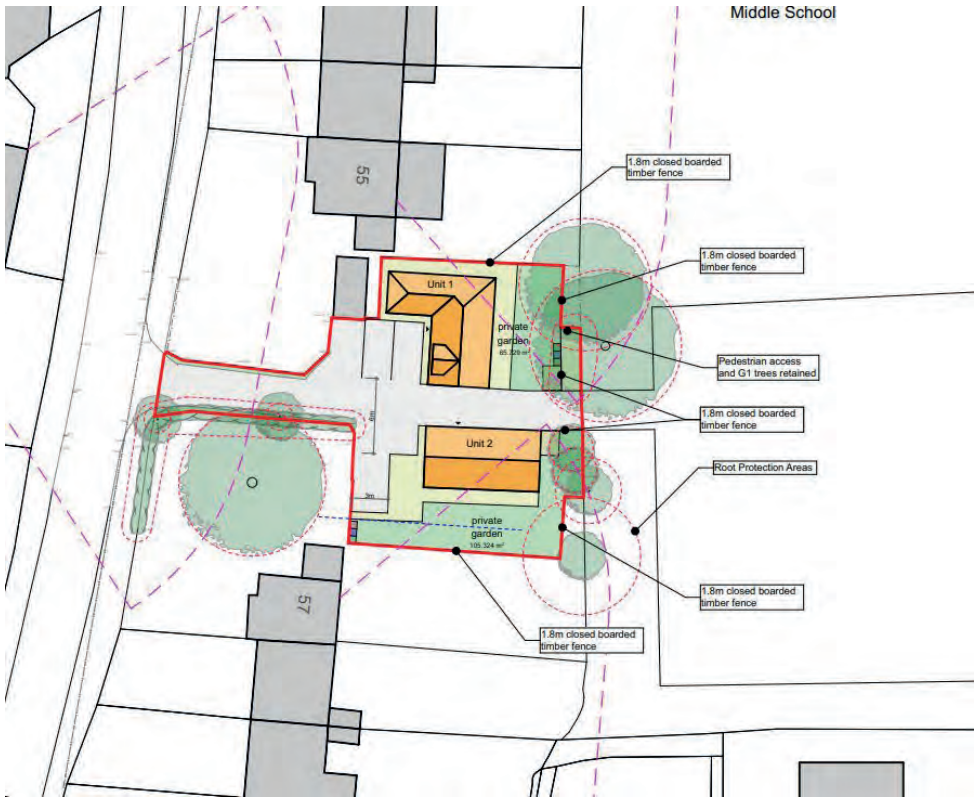
E rhiannon.clark@mfgsolicitors.com

To apply contact:

Land & New Homes bjb

T 01782 211147

E residential-land@bjbmail.com

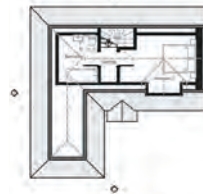


Proposed First Floor



1:100

E5 Front Elevation



1:100

Proposed First Floor

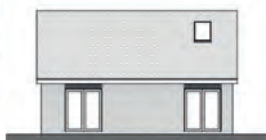


1:100

E1 Front Elevation



Proposed Ground Floor



1:100

E7 Rear Elevation



1:100

Proposed Ground Floor



1:100

E3 Rear Elevation

Turning your development ideas into reality



Wanting to take the next step?
Looking to purchase property or land?

**Join us at the next auction to connect
and discuss your development ideas**

For more details, reach out to Roy Spruce:

☎ 07790 545024

✉ roy@picedesign.co.uk



LOT
38

*Guide price
£350,000 plus

Scan or Click
for further
information.



19 Winghouse Lane, Tittensor, Stoke-on-Trent, Staffordshire, ST12 9HW

- Detached house
- Four bedrooms
- In need of modernisation
- Generous plot
- Freehold
- Council Tax Band – E
- EPC – F

Legal Representative

Victoria Follows
Hand Morgan Owen
T 01785 211411
E vfollows@hmo.co.uk

To apply contact:

Stafford bjb
T 01785 246000
E Stafford@bjbmail.com

LOT
39



*Guide price

£110,000



It is suggested that potential purchaser's make their own enquiries of mortgage lenders as to whether the property is mortgageable prior to making a bid at auction.

Flat 70/Block 3 The Hicking Building, Queens Road, Nottingham, NG2 3BU

- Top floor flat
- Two bedrooms
- Well-presented interior
- Leasehold – 104 years
- Council Tax Band - C
- EPC – C

Legal Representative

Lauren Glass

Alexander & co

T 01332 600005

E Lauren.Glass@aandco.co.uk

To apply contact:

Nottingham haart

T 01115 8501433

E NottinghamHRT@spicerhaart.co.uk

LOT
40

*Guide price
£110,000 plus

Scan or Click
for further
information.



134B Uttoxeter New Road, Derby, Derbyshire, DE22 3JB

- Basement apartment
- Three bedrooms
- Ensuite bathroom
- Spacious kitchen/diner
- Ideally situated for Derby City Centre
- Leasehold – 81 years
- Council Tax Band – D
- EPC - D

Legal Representative

Chris Biggs

Lightfoots Solicitors

T 01844 268322

E cbiggs@lightfoots.co.uk

To apply contact:

Auction bjb

T 01782 211180

E auktion@bjbmail.com

**LOT
41**

*Guide price
£150,000 plus

Scan or Click
for further
information.



Land at Barrie Gardens, Talke, Stoke-on-Trent, ST7 1PB

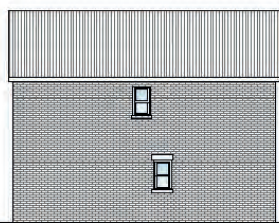
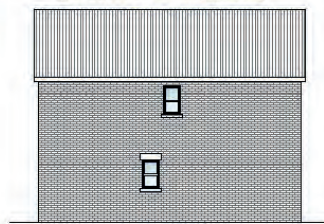
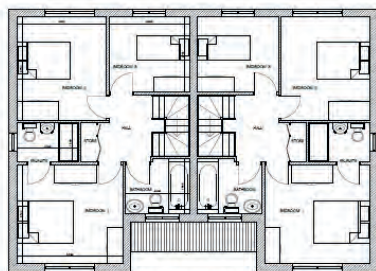
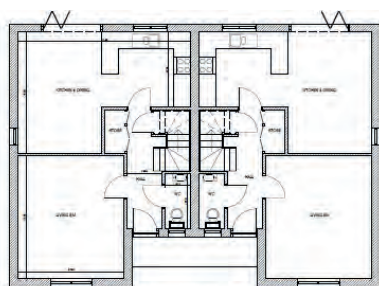
- Residential Development Site
- Outline planning for 9 dwellings
- 8 x 3 bed semi-detached houses
- 1 x 4 bedroom detached house
- REF: 24/00253/OUT
- Established residential area
- Potential GDV: £2.16m
- Site Area: 1.12 Acre (0.45 Ha)

Legal Representative

Nusrat Hussain
MH Solicitors Shelton
T 01782 847755
E Nusrat@mhsolicitors.com

To apply contact:

Land & New Homes bjb
T 01782 211147
E residential-land@bjbmail.com



We are **successfully**
managing property
in **Hanley, Crewe and**
Newcastle Under-Lyme
and surrounding areas

Let smart:
think **bjb**

LANDLORDS

Are you satisfied with your
current managing agent?

- When was your **last** rent review?
- When was your most **recent** condition report?
- When did your agent last **update** you on legislation?
- Has your agent offered you **protection** for non-payment of rent?

Please contact our team for honest and up to
date market advice.



Kyle Mellor
Senior Lettings Agent



Olivia Plant
Lettings Negotiator



Ben Rizk
Lettings Negotiator

Hanley bjb

T: 01782 211120

E: hanley@bjbmail.com

butters john bee ^{bjb}



LOT
42

*Guide price
£120,000 plus



16 Market Drayton Road, Loggerheads, Market Drayton, Shropshire, TF9 4BT

- Semi-detached bungalow
- Two bedrooms
- In need of renovation & repair
- Freehold
- Council Tax Band – B
- EPC - TBC

Legal Representative

Sally-Ann Butter

Graham Withers

T 01630 657222

E sally.butter@grahamwithers.co.uk

To apply contact:

Telford bjb

T 01952 204420

E Telford@bjbmail.com

LOT
43

*Guide price
£60,000 plus

Scan or Click
for further
information.



56 Piccadilly Hanley, Stoke-On-Trent, Staffordshire, ST1 1EG

- Three storey premises
- Former Bar / Restaurant
- Town centre location
- In need of modernisation
- Freehold
- EPC – C (59)

Legal Representative

Jack Sturge
Goddard Dunbar
T 01782 284320 opt 5
E Jack@goddarddunbar.co.uk

To apply contact:

Commercial bjb
T 01782 212201
E commercial@bjbmail.com

LOT
44

*Guide price
£82,000 plus

Scan or Click
for further
information.



It is suggested that potential purchaser's make their own enquiries of mortgage lenders as to whether the property is mortgageable prior to making a bid at auction.

Flats A, B and C, 480-482 Heath End Road, Nuneaton, Warwickshire, CV10 7HE

- Mid-terraced house
- Believed to be converted leasehold flats
- Conveniently situated for local amenities
- Not been inspected by the auctioneer
- Sold with mortgagee not in possession
- No access will be provided
- Leasehold
- Council Tax Band – TBC
- EPC – TBC

Legal Representative

Cameron Ward

TLT LLP

T 0333 006 0000

E auctions@tlt.com

To apply contact:

Auctioner bjb

T 01782 211180

E auction@bjbmail.com

Due to unprecedented demand from buyers we need **more land to sell:**

**Land
Wanted**

- With or without Planning Consent
- Single plots up to 50 + units
- Brownfield or Greenfield
- Buildings For Conversion
- Listed Buildings / Contaminated Land
- Private Treaty or Auction Sale
- Sales Subject to Planning
- Option Agreements

If you have land to sell please get in touch for a no obligation discussion.

Land & Development Team

E: residential-land@bjbmail.com

T: 01782 211147



Paul G, Beardmore
BSc MRICS

Director - Residential Land
paulbeardmore@bjbmail.com
07808 215045



Alex Djukic
MSc BSc

Regional Land Manager
alexdjukic@bjbmail.com
07587 038787

butters john bee ^{bjb}
land & new homes

LOT
45

*Guide price
£90,000 plus

Scan or Click
for further
information.



Apartment 23 Alexandra House, 47 Rutland Street, Leicester, LE1 1SE

- Third floor flat
- Three bedrooms
- In need of modernisation
- Located close to the City Centre
- Leasehold – 103 years
- Council tax band – C
- EPC - D

Legal Representative

Cameron Ward

TLT LLP

T 0333 006 0000

E auctions@tlt.com

To apply contact:

Auction bjb

T 01782 211180

E auction@bjbmail.com

LOT
46

*Guide price
£108,000 plus

Scan or Click
for further
information.



49 Ernest Street, Crewe, Cheshire, CW2 6JE

- Mid-terrace house
- Three bedrooms
- Currently tenanted @ £9,000 p/a
- Freehold
- Council Tax Band - A
- EPC - D

Legal Representative

Michael Wright
Hall Smith Whittingham
T 01270 212000
E mwright@hswsolicitors.co.uk

To apply contact:

Crewe bjb
T 01270 213541
E crewe@bjbmail.com

LOT
47

*Guide price
£91,000 plus

Scan or Click
for further
information.



12 Bew Street, Norton in the Moors, Stoke-on-Trent, Staffordshire, ST6 8JG

- End-terraced house
- Three bedrooms
- In need of modernisation
- Freehold
- Council Tax Band - A
- EPC – TBC

Legal Representative

Kerry Dundas
Dundas Law
T 01782 528338
E kerry@dundaslaw.co.uk

To apply contact:

Hanley bjb
T 01782 202600
E hanley@bjbmail.com

LOT
48

*Guide price
£99,000 plus



The seller is a registered social landlord and is therefore prohibited from selling a property to anyone who is an employee or director of the seller, or was in the last 12 months an employee or director, or is a close relative of such a person or an agent on their behalf.

7 Moran Road, Knutton, Newcastle-under-Lyme, Staffordshire, ST5 6EX

- End -townhouse
- Two bedrooms
- In need of modernisation
- Freehold
- Council Tax Band – A
- EPC – C

Legal Representative

Bruna Saavedra

Anthony Collins Solicitors

T 0121 212 7448

E Bruna.Saavedra@anthonicollins.com

To apply contact:

Newcastle bjb

T 01782 622155

E Newcastle@bjbmail.com

LOT
49

*Guide price
£230,000 plus

Scan or Click
for further
information.



Yew Tree Cottage, Main Road, Betley, Crewe, Cheshire, CW3 9AD

- Semi-detached cottage
- Three bedrooms
- Full of character & features
- Expansive garden
- Freehold
- Council Tax Band - C
- EPC - D

Legal Representative

Tracy Wilcocks
Goddard Dunbar
T 01782 284320
E Tracy@goddarddunbar.co.uk

To apply contact:

Nantwich bjb
T 01270 623444
E nantwich@bjbmail.com



Commercial Auctions

Have you considered Public Auction as a means to sell your Commercial Property?

87.5% Sold*

Our auction is suitable for all commercial property including investments, shops, industrial & offices

- Attracts cash rich purchasers
- Completion within 20 working days
- The only way to find 'best value'
- Catalogues sent to 8,500 people

Interested in finding out more?
Call **01782 212201**
or email commercial@bjbmail.com
and receive £150 discount when quoting this brochure.

*data from September 2023



butters^{bjb}
john bee

LOT
50

*Guide price
£73,000 plus

Scan or Click
for further
information.



129 Bucknall New Road, Hanley, Stoke-on-Trent, Staffordshire, ST1 2BG

- Mid-terrace house
- Three bedrooms
- Currently tenanted @ £7,200 p/a
- Freehold
- Council Tax Band - A
- EPC - D

Legal Representative

Tracy Wilcocks
Goddard Dunbar
T 01782 284320
E tracy@goddarddunbar.co.uk

To apply contact:

Hanley bjb
T 01782 202600
E hanley@bjbmail.com

LOT
51

*Guide price
£100,000 plus



Land at Stock Lane, Wybunbury, Nantwich, CW5 7EX

- Residential Development site
- Full Planning for 1 x 3 Bedroom Bungalow
- (Ref; 23/2493N)
- Popular Cheshire village
- Site Area: 0.14 Acre (566m²)

Legal Representative

Lynne Thornton

Lynne Thornton Solicitors

T 01270 567987

E legal@lynnethornton.co.uk

To apply contact:

Land & New Homes bjb

T 01782 211147

E residential-land@bjbmail.com

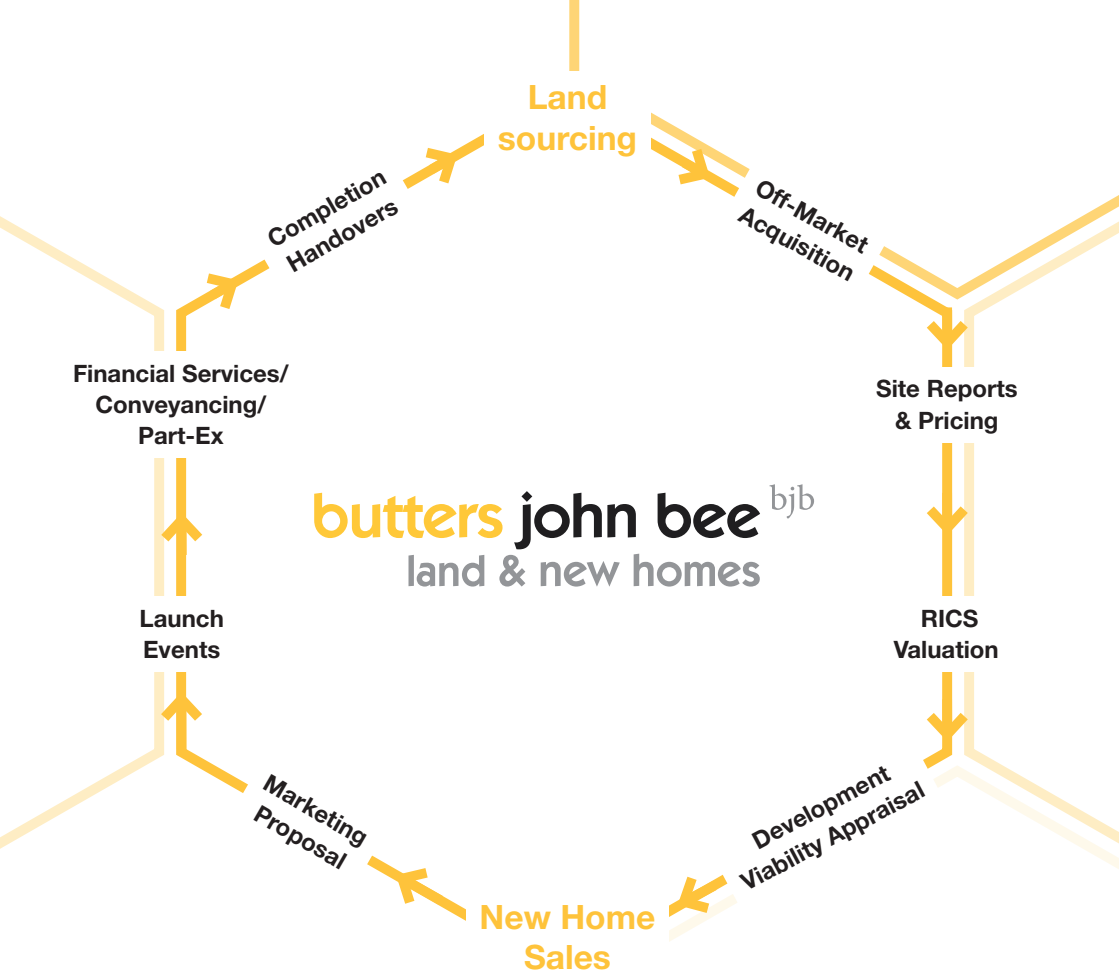


PROPOSED SOUTH EAST (FRONT) ELEVATION 1 : 100



4 PROPOSED SOUTH WEST (SIDE) ELEVATION 1 : 100





For a no obligation discussion please contact:

Carlos Hernandez

**Regional Sales Director
New Homes**

T 01782 405730

M 07741 152287

E carloshernandez@bjbmail.com

Paul Martin

**Regional Sales Manager
New Homes**

T 01782 405730

M 07587 038921

E paulmartin@bjbmail.com

Paul G. Beardmore BSc MRICS

Director Residential Land

T 01782 211147

M 07809 215045

E paulbeardmore@bjbmail.com

Alex Djukic BSc MSc

Regional Land Manager

T 01782 211147

M 07587 038787

E alexdjukic@bjbmail.com

LOT
52

*Guide price
£50,000 plus

Scan or Click
for further
information.



13 Needwood Drive, Wolverhampton, West Midlands, WV4 6BT

- Ground floor flat
- Two bedrooms
- Close to local amenities
- In need of modernisation
- Leasehold – 83 years
- Council Tax Band - A
- EPC – C

Legal Representative

Enquiries

Ascent Conveyancing

T 0161 838 3105

E propertysales@ascent.co.uk

To apply contact:

Auction bjb

T 0800 090 2200

E auction@bjbmail.com

LOT
53

*Guide price
£65,000 plus

Scan or Click
for further
information.



Land at High Street, Newchapel, Stoke-on-Trent, ST7 4PT

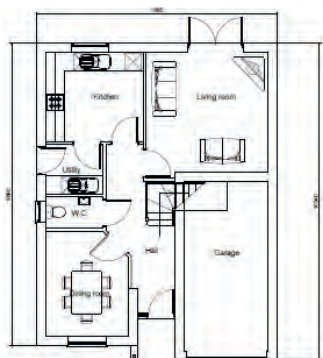
- Land comprising 24 domestic garages
- Potential for residential development
- Subject to Planning
- Planning report available upon request
- Established residential area
- Adjacent the former Newchapel Observatory
- Site Area: 0.72 Acre (2913m²)

Legal Representative

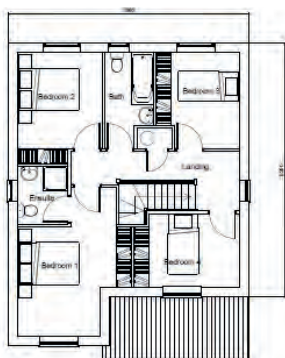
Victoria Follows
Hand Morgan & Owen
T 01782 211411
E vfollows@hmo.co.uk

To apply contact:

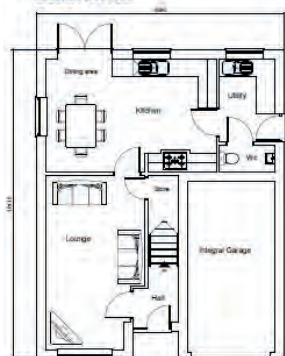
Land & New Homes bjb
T 01782 211147
E residential-land@bjbmail.com



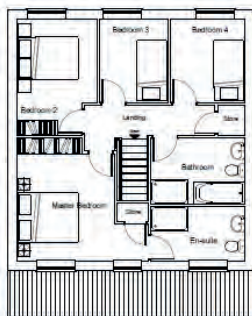
4 Bed detached house
Ground Floor Plan



4 Bed detached house
First Floor Plan
Total Floor Area :
110.18 sq.m. (1186 sq.ft)



4 Bed detached house
Ground Floor Plan



4 Bed detached house
First Floor Plan
Total Floor Area :
110.77 sq.m. (1192 sq.ft)



ILLUSTRATIVE STREETSCENE OF PLOTS 2-5



Follow us on Facebook

@buttersjohnbeeauctions
and stay ahead of
the game.

Keep up to date with news
and events, up and coming
instructions, results and
updates on past lots.

butters john bee^{bjb}

facebook[®]

LOT
54

*Guide price
£91,000 plus

Scan or Click
for further
information.



33 Langford Road, Bucknall, Stoke-on-Trent, Staffordshire, ST2 9EZ

- Semi-detached house
- Three bedrooms
- In need of modernisation
- Off road parking
- Freehold
- Council Tax Band - A
- EPC - D

Legal Representative

Kerry Dundas

Dundas Law

T 01782 528338

E kerry@dundaslaw.co.uk

To apply contact:

Hanley bjb

T 01782 202600

E hanley@bjbmail.com

LOT
55

*Guide price
£125,000 plus

Scan or Click
for further
information.



It is suggested that potential purchaser's make their own enquiries of mortgage lenders as to whether the property is mortgageable prior to making a bid at auction.

109 Weaver Street, Winsford, Cheshire, CW7 4AA

- End-terrace house
- Two bedrooms
- In need of renovation & repair
- Freehold
- Council Tax Band – B
- EPC – TBC

Legal Representative

Stephen

Lewis Rogers

T 01606 961 858

E stephen@lewisrodgers.co.uk

To apply contact:

Winsford bjb

T 01606 596444

E Winsford@bjbmail.com

LOT
56

*Guide price
£81,000 plus

Scan or Click
for further
information.



The seller is a registered social landlord and is therefore prohibited from selling a property to anyone who is an employee or director of the seller, or was in the last 12 months an employee or director, or is a close relative of such a person or an agent on their behalf.

6 Orme Road, Newcastle-under-Lyme, Staffordshire, ST5 2ND

- Mid -townhouse
- Two bedrooms
- In need of modernisation
- Freehold
- Council Tax Band – A
- EPC – C

Legal Representative

Bruna Saavedra

Anthony Collins Solicitors

T 0121 212 7448

E Bruna.Saavedra@anthonycollins.com

To apply contact:

Newcastle bjb

T 01782 622155

E Newcastle@bjbmail.com

LOT
57

*Guide price
£91,000 plus

Scan or Click
for further
information.



3 Red Lion Close, Talke, Stoke on Trent, Staffordshire, ST7 1SZ

- Detached bungalow
- Two bedrooms
- In need of modernisation
- Front and rear gardens
- Freehold
- Council Tax Band - C
- EPC - TBC

Legal Representative

Kerry Dundas

Dundas Law

T 01782 528338

E kerry@dundaslaw.co.uk

To apply contact:

Kidsgrove bjb

T 01782 784442

E kidsgrove@bjbmail.com

LOT
58

*Guide price
£112,500 plus

Scan or Click
for further
information.



32 Clifton Avenue, Crewe, Cheshire, CW2 7PZ

- Mid-terrace house
- Three bedrooms
- First floor bathroom
- In need of modernisation
- Freehold
- Council Tax Band - B
- EPC - D

Legal Representative

Tracy Wilcocks
Goddard Dunbar
T 01782 284320
E tracy@goddarddunbar.co.uk

To apply contact:

Crewe bjb
T 01270 213541
E crewe@bjbmail.com

LOT
59

*Guide price
£90,000 plus

Scan or Click
for further
information.



Please note, Completion for this property will be in 40 business days from the date of Exchange.

30 Repington Road, Sneyd Green, Stoke-On-Trent, Staffordshire, ST1 6JT

- Semi-detached house
- Three bedrooms
- Great investment opportunity
- Low maintenance garden
- Freehold
- Council Tax Band - A
- EPC - C

Legal Representative

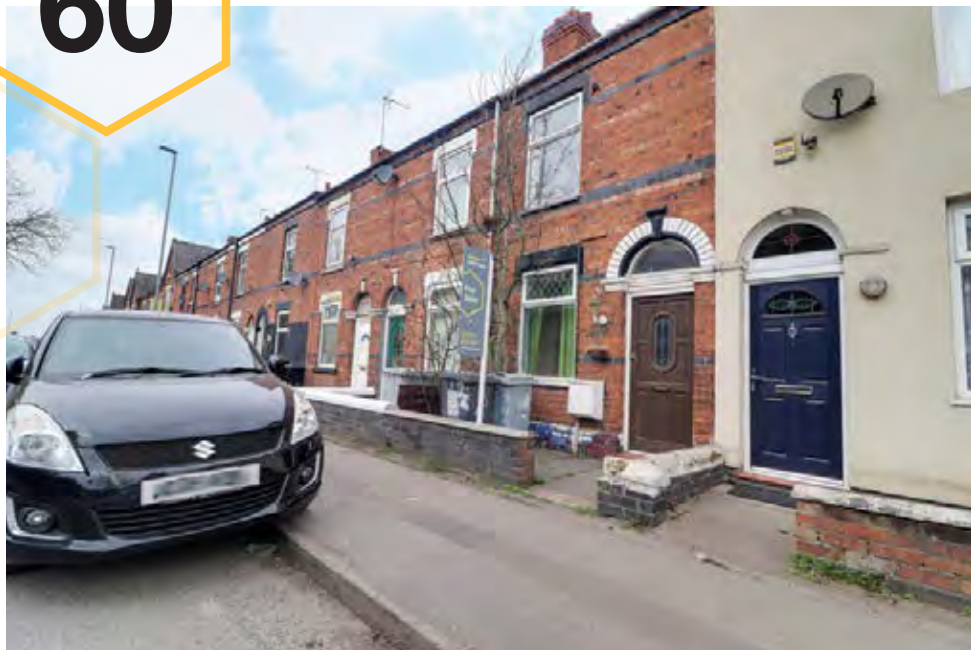
Yusuf Loonat
Vicarage Court Solicitors Limited
T 0121 452 4955
E yusuf@vicaragecourt.com

To apply contact:

Hanley bjb
T 01782 202600
E hanley@bjbmail.com

**LOT
60**

*Guide price
£72,000 plus



349 West Street, Crewe, Cheshire, CW1 3HY

- Mid-terrace house
- Two bedrooms
- In need of modernisation
- Freehold
- Council Tax Band - A
- EPC - D

Legal Representative

TBC

Inspire Legal

T 03332 420144

E Info@inspirelegallgroup.co.uk

To apply contact:

Crewe bjb

T 01270 213541

E crewe@bjbmail.com

Common Auction Conditions

7th Edition. Reproduced with the consent of  RICS

The general conditions (including any extra general conditions) apply to the contract except to the extent that they are varied by special conditions or by an addendum.

Glossary

This glossary applies to the **auction conduct conditions** and the **sale conditions**.

Wherever it makes sense:

- singular words can be read as plurals, and plurals as singular words;
- a "person" includes a corporate body;
- words of one gender include the other genders;
- references to legislation are to that legislation as it may have been modified or re-enacted by the date of the **auction** or the **contract date** (as applicable); and
- where the following words printed in bold black type appear in bold blue type they have the specified meanings.

Actual completion date The date when **completion** takes place or is treated as taking place for the purposes of apportionment and calculating interest.

Addendum An amendment or addition to the **conditions** or to the **particulars** or to both whether contained in a supplement to the **catalogue**, a written notice from the auctioneers or an oral announcement at the **auction**.

Agreed completion date Subject to **condition** G9.3:

- (a) the date specified in the **special conditions**; or
- (b) if no date is specified, 20 **business days** after the **contract date**; but if that date is not a **business day** the first subsequent **business day**.

Approved financial institution Any Bank or Building Society that is regulated by a competent UK regulatory authority or is otherwise acceptable to the **auctioneers**.

Arrears Arrears of rent and other sums due under the **tenancies** and still outstanding on the **actual completion date**.

Arrears schedule The arrears schedule (if any) forming part of the **special conditions**.

Auction The auction advertised in the **catalogue**.

Auction conduct conditions The conditions so headed, including any extra auction conduct conditions.

Auctioneers The auctioneers at the **auction**.

Business day Any day except (a) a Saturday or a Sunday; (b) a bank holiday in England and Wales; or (c) Good Friday or Christmas Day.

Buyer The person who agrees to buy the **lot** or, if applicable, that person's personal representatives: if two or more are jointly the **buyer** their obligations can be enforced against them jointly or against each of them separately.

Catalogue the catalogue for the **auction** as it exists at the date of the **auction** (or, if the catalogue is the different, the date of the **contract**) including any **addendum** and whether printed or made available electronically.

Completion unless the **seller** and the **buyer** otherwise agree, the occasion when they have both complied with the obligations under the **contract** that they are obliged to comply with prior to **completion**, and the amount payable on **completion** has been unconditionally received in the **seller's** conveyancer's client account (or as otherwise required by the terms of the **contract**)

Condition One of the **auction conduct conditions** or **sales conditions**.

Contract The contract by which the **seller** agrees to sell and the **buyer** agrees to buy the **lot**.

Contract date The date of the **auction** or, if the **lot** is not sold at the **auction**:

- (a) the date of the **sale memorandum** signed by both the **seller** and **buyer**; or
- (b) if contracts are exchanged, the date of exchange. If exchange is not effected in person or by an irrevocable agreement to exchange made by telephone, fax or electronic mail the date of exchange is the date on which both parts have been signed and posted or otherwise placed beyond normal retrieval.

Documents Documents of title (including, if title is registered, the entries on the register and the title plan) and other documents listed or referred to in the **special conditions** relating to the lot.

Extra general conditions Any **conditions** added or varied by the **auctioneers** starting at condition G30

Financial charge A charge to secure a loan or other financial indebtedness (not including a rentcharge).

General conditions That part of the **sale conditions** so headed, including any extra general conditions.

Interest rate if not specified in the **special conditions**, the higher of 6% and 4% above the base rate from time to time of barclays bank plc. The **interest rate** will also apply to any judgment debt, unless the statutory rate is higher.

Lot Each separate property described in the **catalogue** or (as the case may be) the property that the **seller** has agreed to sell and the **buyer** to buy (including **chattels**, if any).

Old arrears **Arrears** due under any of the **tenancies** that are not "new tenancies" as defined by the Landlord and Tenant (Covenants) Act 1995.

Particulars The section of the **catalogue** that contains descriptions of each lot (as varied by any **addendum**).

Practitioner An insolvency practitioner for the purposes of the Insolvency Act 1986 (or, in relation to jurisdictions outside the United Kingdom, any similar official).

Price The price that the **buyer** agrees to pay for the **lot**.

Ready to complete Ready, willing and able to complete: if **completion** would enable the **seller** to discharge all **financial charges** secured on the **lot** that have to be discharged by **completion**, then those outstanding financial charges do not prevent the **seller** from being **ready to complete**.

Sale conditions The **general conditions** as varied by any **special conditions** or **addendum**.

Sale memorandum The form so headed (whether or not set out in the **catalogue**) in which the terms of the **contract** for the sale of the **lot** are recorded.

Seller The person selling the **lot**. If two or more are jointly the **seller** their obligations can be enforced against them jointly or against each of them separately.

Special conditions Those of the **sale conditions** so headed that relate to the **lot**.

Tenancies Tenancies, leases, licences to occupy and agreements for lease and any documents varying or supplemental to them.

Tenancy schedule The tenancy schedule (if any) forming part of the **special conditions**.

Transfer Transfer includes a conveyance or assignment (and "to transfer" includes "to convey" or "to assign").

TUPE The Transfer of Undertakings (Protection of Employment) Regulations 2006.

VAT Value Added Tax or other tax of a similar nature.

VAT option An option to tax.

We (and us and our) The **auctioneers**.

You (and your) Someone who has a copy of the **catalogue** or who attends or bids at the **auction**, whether or not a **buyer**.

Important notice

A prudent buyer will, before bidding for a lot at an auction:

- Take professional advice from a conveyancer and, in appropriate cases, a chartered surveyor and an accountant;
- Read the conditions;
- Inspect the lot;
- Carry out usual searches and make usual enquiries;
- Check the content of all available leases and other documents relating to the lot;
- Have finance available for the deposit and purchase price;
- Check whether VAT registration and election is advisable;

The conditions assume that the buyer has acted like a prudent buyer.

If you choose to buy a lot without taking these normal precautions you do so at your own risk.

Auction Conduct Conditions

- A1 Introduction** the **auction conduct conditions** apply wherever the **lot** is located
- A1.1 Words in bold blue type have special meanings, which are defined in the Glossary.
- A1.2 The **catalogue** is issued only on the basis that **you** accept these **auction conduct conditions**. They govern **our** relationship with **you** and cannot be disappplied or varied by the **sale conditions** (even by a **condition** purporting to replace the whole of the Common Auction Conditions). They can be varied only if **we** agree.
- A2 Our role**
- A2.1 As agents for each **seller** we have authority to:
- (a) prepare the **catalogue** from information supplied by or on behalf of each **seller**;
 - (b) offer each **lot** for sale;
 - (c) sell each **lot**;
 - (d) receive and hold deposits;
 - (e) sign each **sale memorandum**; and
 - (f) treat a **contract** as repudiated if the **buyer** fails to sign a **sale memorandum** or pay a deposit as required by these **auction conduct conditions**.
- A2.2 **Our** decision on the conduct of the **auction** is final.
- A2.3 **We** may cancel the **auction**, or alter the order in which **lots** are offered for sale. **We** may also combine or divide **lots**. A **lot** may be sold or withdrawn from sale prior to the **auction**.
- A2.4 **You** acknowledge that to the extent permitted by law **we** owe **you** no duty of care and you have no claim against **us** for any loss.
- A2.5 **We** may refuse to admit one or more persons to the **auction** without having to explain why
- A2.6 **You** must not be allowed to bid unless **you** provide such evidence of **your** identity and other information as **we** reasonably require from all bidders
- A3 Bidding and reserve prices**
- A3.1 All bids are to be made in pounds sterling exclusive of any applicable **VAT**.
- A3.2 **We** may refuse to accept a bid. **We** do not have to explain why.
- A3.3 If there is a dispute over bidding **we** are entitled to resolve it, and **our** decision is final.
- A3.4 Unless stated otherwise each **lot** is subject to a reserve price (which may be fixed just before the **lot** is offered for sale). If no bid equals or exceeds that reserve price the **lot** will be withdrawn from the **auction**.
- A3.5 Where there is a reserve price the **seller** may bid (or ask **us** or another agent to bid on the **seller's** behalf) up to the reserve price but may not make a bid equal to or exceeding the reserve price. **You** accept that it is possible that all bids up to the reserve price are bids made by or on behalf of the **seller**.
- A3.6 Where a guide price (or range of prices) is given that guide is the minimum price at which, or range of prices within which, the **seller** might be prepared to sell at the date of the guide price. But guide prices may change. The last published guide price will normally be at or above any reserve price, but not always – as the **seller** may fix the final reserve price just before bidding commences.
- A4 The particulars and other information**
- A4.1 **We** have taken reasonable care to prepare **particulars** that correctly describe each **lot**. The **particulars** are based on information supplied by or on behalf of the **seller**. **You** need to check that the information in the **particulars** is correct.
- A4.2 If the **special conditions** do not contain a description of the **lot**, or simply refer to the relevant **lot** number, you take the risk that the description contained in the **particulars** is incomplete or inaccurate, as the **particulars** have not been prepared by a conveyancer and are not intended to form part of a legal contract.
- A4.3 The **particulars** and the **sale conditions** may change prior to the **auction** and it is **your** responsibility to check that **you** have the correct versions.
- A4.4 If **we** provide information, or a copy of a document, provided by others **we** do so only on the basis that **we** are not responsible for the accuracy of that information or document.

A5 The contract

- A5.1 A successful bid is one **we** accept as such (normally on the fall of the hammer). This **condition** A5 applies to **you** if **you** make the successful bid for a **lot**.
- A5.2 **You** are obliged to buy the **lot** on the terms of the **sale memorandum** at the **price** **you** bid plus **VAT** (if applicable).
- A5.3 **You** must before leaving the **auction**:
- (a) provide all information **we** reasonably need from **you** to enable us to complete the **sale memorandum** (including proof of your identity if required by **us**);
 - (b) sign the completed **sale memorandum**; and
 - (c) pay the deposit.
- A5.4 If **you** do not **we** may either:
- (a) as agent for the **seller** treat that failure as **your** repudiation of the **contract** and offer the **lot** for sale again: the **seller** may then have a claim against **you** for breach of contract; or (b) sign the **sale memorandum** on **your** behalf.
- A5.5 The deposit:
- (a) is to be held as stakeholder where **VAT** would be chargeable on the deposit were it to be held as agent for the **seller**, but otherwise is to be held as stated in the **sale conditions**; and
 - (b) must be paid in pounds sterling by cheque or by bankers' draft made payable to **us** on an **approved financial institution**. The extra auction conduct conditions may state if **we** accept any other form of payment
 - (c) is to be held by **us** (or, at **our** option, the **seller's** conveyancer)
- A5.6 **We** may retain the **sale memorandum** signed by or on behalf of the **seller** until the deposit has been received in cleared funds.
- A5.7 If the **buyer** does not comply with its obligations under the **contract** then:
- (a) **you** are personally liable to buy the **lot** even if **you** are acting as an agent; and
 - (b) **you** must indemnify the **seller** in respect of any loss the **seller** incurs as a result of the **buyer's** default.
- A5.8 Where the **buyer** is a company **you** warrant that the **buyer** is properly constituted and able to buy the **lot**.
- A5.9 where we hold the deposit as stakeholder we are authorised to release it (and interest on it if applicable) to the **seller** on completion or, if **completion** does not take place, to the person entitled to it under the **sale conditions**.
- A6 Extra Auction Conduct Conditions**
- A6.1 Despite any **condition** to the contrary:
- (a) The minimum deposit **we** accept is £3,000 (or the total **price**, if less). A **special condition** may, however, require a higher minimum deposit
 - (b) Sub-clause (a) of **Auction Conduct Condition** A5.5 shall be deemed to be deleted and shall be replaced with the following: "(a) is to be held as agent for the **seller** unless expressly stated otherwise in the **special conditions** provided that where **VAT** would be chargeable on the deposit were it to be held as agent for the **seller**, the deposit will be held as stakeholder despite any contrary provision in any **condition**; and" (c) where the deposit is paid to **us** to be held as stakeholder, **we** may if **we** choose transfer all or part of it to the **seller's** conveyancer for them to hold as stakeholder in **our** place. Any part of the deposit not so transferred will be held by **us** as stakeholder.
- A6.2 **The buyer** will pay A Buyers Administration Fee will be payable on exchange, as specified on the property listing to **us** for each **lot** purchased at the **auction**, prior to **auction** or post **auction** in addition to the deposit.
- A6.3 **The buyer** will provide proof of identity and residency to **us**.
- A6.4 **We** may accept payment by debit or credit card. Credit card payments carry a 2.5% surcharge. Credit card payment is not allowed for payment of deposit.
- A6.5 **We** may refuse admittance to any person attending the **auction**. **We** do not have to explain why.
- A6.6 **The buyer** will be photographed at the auction before the contract is signed.
- A6.7 **The Seller** will not be under any obligation to remove any rubbish or other items whatsoever from the **lot** prior to completion of the purchase and the **Buyer** will not be allowed to delay **completion** or refuse to complete or claim compensation in respect of any rubbish or other items remaining on the **lot**.

General Conditions

Words in small capitals have the special meanings defined in the Glossary.

The **general conditions** (as **we** supplement or change them by any **extra general conditions** or **addendum**) are compulsory but may be disapplied or changed in relation to one or more **lots** by **special conditions**. The template form of **sale memorandum** is not compulsory but is to be varied only if **we** agree. The template forms of **special conditions** and schedules are recommended, but are not compulsory and may be changed by the **seller** of a **lot**

G1 The lot

G1.1 The **lot** (including any rights to be granted or reserved, and any exclusions from it) is described in the **special conditions**, or if not so described the **lot** is that referred to in the **sale memorandum**.

G1.2 The **lot** is sold subject to any **tenancies** disclosed by the **special conditions**, but otherwise with vacant possession on **completion**.

G1.3 From the **contract date** the **seller** has no obligation to insure the **lot** and the **buyer** bears all risks of loss or damage unless (a) the **lot** is sold subject to a **tenancy** that requires the **seller** to insure the **lot**

(b) the **special conditions** require the **seller** to insure the **lot**

G1.4 The **lot** is also sold subject to such of the following as may affect it, whether they arise before or after the **contract date** and whether or not they are disclosed by the **seller** or are apparent from inspection of the lot or from the **documents**:

(a) matters registered or capable of registration as local land charges;

(b) matters registered or capable of registration by any competent authority or under the provisions of any statute;

(c) notices, orders, demands, proposals and requirements of any competent authority;

(d) charges, notices, orders, restrictions, agreements and other matters relating to town and country planning, highways or public health;

(e) rights, easements, quasi-easements, and wayleaves;

(f) outgoing and other liabilities;

(g) any interest which overrides, within the meaning of the Land Registration Act 2002;

(h) matters that ought to be disclosed by the searches and enquiries a prudent buyer would make, whether or not the **buyer** has made them; and

(i) anything the **seller** does not and could not reasonably know about.

G1.5 Where anything subject to which the **lot** is sold would expose the **seller** to liability the **buyer** is to comply with it and indemnify the **seller** against that liability.

G1.6 The **seller** must notify the **buyer** of any notices, orders, demands, proposals and requirements of any competent authority of which it learns after the **contract date** but the **buyer** must comply with them and keep the **seller** indemnified.

G1.7 The **lot** does not include any tenant's or trade fixtures or fittings.

G1.8 Where chattels are included in the **lot** the **buyer** takes them as they are at **completion** and the **seller** is not liable if they are not fit for use.

G1.9 The **buyer** buys with full knowledge of:

(a) the **documents**, whether or not the **buyer** has read them; and

(b) the physical condition of the **lot** and what could reasonably be discovered on inspection of it, whether or not the **buyer** has inspected it.

G1.10 The **buyer** is not to rely on the information contained in the **particulars** but may rely on the **seller's** conveyancer's written replies to preliminary enquiries to the extent stated in those replies.

G2 Deposit

G2.1 The amount of the deposit is the greater of:

(a) any minimum deposit stated in the **auction conduct conditions** (or the total **price**, if this is less than that minimum); and

(b) 10% of the **price** (exclusive of any **VAT** on the **price**).

G2.2 The deposit

(a) must be paid in pounds sterling by cheque or banker's draft drawn on an **approved financial institution** (or by any other means of payment that the **auctioneers** may accept); and

(b) is to be held as stakeholder unless the **auction conduct conditions** provide that it is to be held as agent for the **seller**.

G2.3 Where the **auctioneers** hold the deposit as stakeholder they are authorised to release it (and interest on it if applicable) to the **seller** on **completion** or, if **completion** does not take place, to the person entitled to it under the **sale conditions**.

G2.4 If a cheque for all or part of the deposit is not cleared on first presentation the **seller** may treat the **contract** as at an end and bring a claim against the **buyer** for breach of contract.

G2.5 Interest earned on the deposit belongs to the **seller** unless the **sale conditions** provide otherwise.

G3 Between contract and completion

G3.1 From the **contract date** the **seller** has no obligation to insure the **lot** and the **buyer** bears all risks of loss or damage unless: (a) the **lot** is sold subject to a **tenancy** that requires the **seller** to insure the **lot**

(b) the **special conditions** require the **seller** to insure the **lot**;

(c) if the **buyer** so requests, and pays any additional premium, use reasonable endeavours to increase the sum insured or make other changes to the policy;

(d) at the request of the **buyer** use reasonable endeavours to have the **buyer's** interest noted on the policy if it does not cover a contracting purchaser;

(e) unless otherwise agreed, cancel the insurance at **completion**, apply for a refund of premium and (subject to the rights of any tenant or other third party) pay that refund to the **buyer**; and

(f) (subject to the rights of any tenant or other third party) hold on trust for the **buyer** any insurance payments that the **seller** receives in respect of loss or damage arising after the **contract date** or assign to the **buyer** the benefit of any claim; and the **buyer** must on **completion** reimburse to the **seller** the cost of that insurance (to the extent not already paid by the **buyer** or a tenant or other third party) for the period from and including the **contract date** to **completion**.

G3.2 No damage to or destruction of the **lot** nor any deterioration in its condition, however caused, entitles the **buyer** to any reduction in **price**, or to delay **completion**, or to refuse to complete.

G3.3 Section 47 of the Law of Property Act 1925 does not apply.

G3.4 Unless the **buyer** is already lawfully in occupation of the **lot** the **buyer** has no right to enter into occupation prior to **completion**.

G4 Title and identity

G4.1 Unless **condition** G4.2 applies, the **buyer** accepts the title of the **seller** to the **lot** as at the **contract date** and may raise no requisition or objection except in relation to any matter that occurs after the **contract date**.

G4.2 If any of the **documents** is not made available before the **auction** the following provisions apply:

(a) The buyer may raise no requisition or on objection to any of the documents that is made available before the auction.

(b) If the **lot** is registered land the **seller** is to give to the **buyer** within five **business days** of the **contract date** an official copy of the entries on the register and title plan and, where noted on the register, of all documents subject to which the **lot** is being sold.

(c) If the **lot** is not registered land the **seller** is to give to the **buyer** within five **business days** an abstract or epitome of title starting from the root of title mentioned in the **special conditions** (or, if none is mentioned, a good root of title more than fifteen years old) and must produce to the **buyer** the original or an examined copy of every relevant **document**.

(d) If title is in the course of registration, title is to consist of certified copies of:

(i) the application for registration of title made to the land registry;

(ii) the **documents** accompanying that application;

(iii) evidence that all applicable stamp duty land tax relating to that application has been paid; and

(iv) a letter under which the **seller** or its conveyancer agrees to use all reasonable endeavours to answer any requisitions raised by the land registry and to instruct the land registry to send the completed registration documents to the **buyer**.

(e) The **buyer** has no right to object to or make requisitions on any title information more than seven **business days** after that information has been given to the **buyer**.

- G4.3 Unless otherwise stated in the **special conditions** the **seller** sells with full title guarantee except that (and the **transfer** shall so provide):
- (a) the covenant set out in section 3 of the Law of Property (Miscellaneous Provisions) Act 1994 shall not extend to matters recorded in registers open to public inspection; these are to be treated as within the actual knowledge of the **buyer**; and
 - (b) the covenant set out in section 4 of the Law of Property (Miscellaneous Provisions) Act 1994 shall not extend to any condition or tenant's obligation relating to the state or condition of the **lot** where the **lot** is leasehold property.
- G4.4 The **transfer** is to have effect as if expressly subject to all matters subject to which the **lot** is sold under the **contract**.
- G4.5 The **seller** does not have to produce, nor may the **buyer** object to or make a requisition in relation to, any prior or superior title even if it is referred to in the **documents**.
- G4.6 The **seller** (and, if relevant, the **buyer**) must produce to each other such confirmation of, or evidence of, their identity and that of their mortgagees and attorneys (if any) as is necessary for the other to be able to comply with applicable Land Registry Rules when making application for registration of the transaction to which the **conditions** apply.
- G5 Transfer**
- G5.1 Unless a form of **transfer** is prescribed by the **special conditions**:
- (a) the **buyer** must supply a draft **transfer** to the **seller** at least ten **business days** before the **agreed completion date** and the engrossment (signed as a deed by the **buyer** if **condition** G5.2 applies) five **business days** before that date or (if later) two **business days** after the draft has been approved by the **seller**; and
 - (b) the **seller** must approve or revise the draft **transfer** within five **business days** of receiving it from the **buyer**.
- G5.2 If the **seller** remains liable in any respect in relation to the **lot** (or a tenancy) following completion the **buyer** is specifically to covenant in the transfer to indemnify the seller against that liability.
- G5.3 The **seller** cannot be required to **transfer** the **lot** to anyone other than the **buyer**, or by more than one **transfer**.
- G5.4 Where the **special conditions** state that the **seller** is to grant a new lease to the **buyer**
- (a) the **conditions** are to be read so that the **transfer** refers to the new lease, the **seller** to the proposed landlord and the **buyer** to the proposed tenant;
 - (b) the form of new lease is that described by the **special conditions**; and
 - (c) the **seller** is to produce, at least five **business days** before the **agreed completion date**, the engrossed counterpart lease, which the **buyer** is to sign and deliver to the **seller** on **completion**.
- G6 Completion**
- G6.1 **Completion** is to take place at the offices of the **seller's** conveyancer, or where the **seller** may reasonably require, on the **agreed completion date**. The **seller** can only be required to complete on a **business day** and between the hours of 0930 and 1700.
- G6.2 The amount payable on **completion** is the balance of the **price** adjusted to take account of apportionments plus (if applicable) **VAT** and interest.
- G6.3 Payment is to be made in pounds sterling and only by: (a) direct transfer to the **seller's** conveyancer's client account; and
- (b) the release of any deposit held by a stakeholder.
- G6.4 Unless the **seller** and the **buyer** otherwise agree, **completion** cannot take place until both have complied with their obligations under the **contract** and the balance of the **price** is unconditionally received in the **seller's** conveyancer's client account.
- G6.5 If **completion** takes place after 1400 hours for a reason other than the **seller's** default it is to be treated, for the purposes of apportionment and calculating interest, as if it had taken place on the next **business day**.
- G6.6 Where applicable the **contract** remains in force following **completion**.
- G7 Notice to complete**
- G7.1 The **seller** or the **buyer** may on or after the **agreed completion date** but before **completion** give the other notice to complete within ten **business days** (excluding the date on which the notice is given) making time of the essence.
- G7.2 The person giving the notice must be **ready to complete**.
- G7.3 If the **buyer** fails to comply with a notice to complete the **seller** may, without affecting any other remedy the **seller** has:
- (a) terminate the **contract**;
 - (b) claim the deposit and any interest on it if held by a stakeholder;
 - (c) forfeit the deposit and any interest on it;
 - (d) resell the **lot**; and
 - (e) claim damages from the **buyer**.
- G7.4 If the **seller** fails to comply with a notice to complete the **buyer** may, without affecting any other remedy the **buyer** has:
- (a) terminate the **contract**; and
 - (b) recover the deposit and any interest on it from the **seller** or, if applicable, a stakeholder.
- G8 If the contract is brought to an end**
- If the **contract** is lawfully brought to an end:
- (a) the **buyer** must return all papers to the **seller** and appoints the **seller** its agent to cancel any registration of the **contract**; and
 - (b) the **seller** must return the deposit and any interest on it to the **buyer** (and the **buyer** may claim it from the stakeholder, if applicable) unless the **seller** is entitled to forfeit the deposit under **condition** G7.3.
- G9 Landlord's licence**
- G9.1 Where the **lot** is or includes leasehold land and licence to assign is required this **condition** G9 applies.
- G9.2 The **contract** is conditional on that licence being obtained, by way of formal licence if that is what the landlord lawfully requires.
- G9.3 The **agreed completion date** is not to be earlier than the date five **business days** after the **seller** has given notice to the **buyer** that licence has been obtained. G9.4 The **seller** must:
- (a) use all reasonable endeavours to obtain the licence at the **seller's** expense; and
 - (b) enter into any authorised guarantee agreement properly required.
- G9.5 The **buyer** must:
- (a) promptly provide references and other relevant information; and
 - (b) comply with the landlord's lawful requirements.
- G9.6 If within three months of the **contract date** (or such longer period as the **seller** and **buyer** agree) the licence has not been obtained the **seller** or the **buyer** may (if not then in breach of any obligation under this **condition** G9) by notice to the other terminate the **contract** at any time before licence is obtained. That termination is without prejudice to the claims of either **seller** or **buyer** for breach of this **condition** G9.
- G10 Interest and apportionments**
- G10.1 If the **actual completion date** is after the **agreed completion date** for any reason other than the **seller's** default the **buyer** must pay interest at the **interest rate** on the **price** (less any deposit paid) from the **agreed completion date** up to and including the **actual completion date**.
- G10.2 Subject to **condition** G11 the **seller** is not obliged to apportion or account for any sum at **completion** unless the **seller** has received that sum in cleared funds. The **seller** must pay to the **buyer** after **completion** any sum to which the **buyer** is entitled that the **seller** subsequently receives in cleared funds.
- G10.3 Income and outgoings are to be apportioned at **actual completion date** unless:
- (a) the **buyer** is liable to pay interest; and
 - (b) the **seller** has given notice to the **buyer** at any time up to **completion** requiring apportionment on the date from which interest becomes payable by the **buyer**; in which event income and outgoings are to be apportioned on the date from which interest becomes payable by the **buyer**.
- G10.4 Apportionments are to be calculated on the basis that:
- (a) the **seller** receives income and is liable for outgoings for

	the whole of the day on which apportionment is to be made;	requirements unless to do so would (but for the indemnity in paragraph (c)) expose the seller to a liability that the seller would not otherwise have, in which case the seller may act reasonably in such a way as to avoid that liability;
	(b) annual income and expenditure accrues at an equal daily rate assuming 365 days in a year, and income and expenditure relating to some other period accrues at an equal daily rate during the period to which it relates; and	(b) if the seller gives the buyer notice of the seller's intended act and the buyer does not object within five business days giving reasons for the objection the seller may act as the seller intends; and
	(c) where the amount to be apportioned is not known at completion apportionment is to be made by reference to a reasonable estimate and further payment is to be made by seller or buyer as appropriate within five business days of the date when the amount is known.	(c) the buyer is to indemnify the seller against all loss or liability the seller incurs through acting as the buyer requires, or by reason of delay caused by the buyer .
G10.5	if a payment due from the buyer to the seller on or after completion is not paid by the due date, the buyer is to pay interest to the seller at the interest rate on that payment from the due date up to and including the date of payment.	G13 Rent deposits Where any TENANCY is an assured shorthold TENANCY , the SELLER and the BUYER are to comply with their respective statutory duties in relation to the protection of tenants' deposits, and to demonstrate in writing to the other (before COMPLETION , so far as practicable) that they have complied
G11 Arrears		G13.1 This condition G13 applies where the seller is holding or otherwise entitled to money by way of rent deposit in respect of a tenancy . In this condition G13 "rent deposit deed" means the deed or other document under which the rent deposit is held.
Part 1 Current rent		G13.2 If the rent deposit is not assignable the seller must on completion hold the rent deposit on trust for the buyer and, subject to the terms of the rent deposit deed, comply at the cost of the buyer with the buyer's lawful instructions.
G11.1	"Current rent" means, in respect of each of the tenancies subject to which the lot is sold, the instalment of rent and other sums payable by the tenant in advance on the most recent rent payment date on or within four months preceding completion .	G13.3 Otherwise the seller must on completion pay and assign its interest in the rent deposit to the buyer under an assignment in which the buyer covenants with the seller to:
G11.2	If on completion there are any arrears of current rent the buyer must pay them, whether or not details of those arrears are given in the special conditions .	(a) observe and perform the seller's covenants and conditions in the rent deposit deed and indemnify the seller in respect of any breach;
G11.3	Parts 2 and 3 of this condition G11 do not apply to arrears of current rent.	(b) give notice of assignment to the tenant; and
Part 2 Buyer to pay for arrears		(c) give such direct covenant to the tenant as may be required by the rent deposit deed.
G11.4	Part 2 of this condition G11 applies where the special conditions give details of arrears .	G14 VAT
G11.5	The buyer is on completion to pay, in addition to any other money then due, an amount equal to all arrears of which details are set out in the special conditions . G11.6 If those arrears are not old arrears the seller is to assign to the buyer all rights that the seller has to recover those arrears .	G14.1 Where a sale condition requires money to be paid or other consideration to be given, the payer must also pay any VAT that is chargeable on that money or consideration, but only if given a valid VAT invoice.
Part 3 Buyer not to pay for arrears		G14.2 Where the special conditions state that no VAT option has been made the seller confirms that none has been made by it or by any company in the same VAT group nor will be prior to completion .
G11.7	Part 3 of this condition G11 applies where the special conditions :	G15 Transfer as a going concern
	(a) so state; or	G15.1 Where the special conditions so state:
	(b) give no details of any arrears .	(a) the seller and the buyer intend, and will take all practicable steps (short of an appeal) to procure, that the sale is treated as a transfer of a going concern; and (b) this condition G15 applies.
G11.8	While any arrears due to the seller remain unpaid the buyer must:	G15.2 The seller confirms that the seller
	(a) try to collect them in the ordinary course of management but need not take legal proceedings or forfeit the tenancy ;	(a) is registered for VAT , either in the seller's name or as a member of the same VAT group; and
	(b) pay them to the seller within five business days of receipt in cleared funds (plus interest at the interest rate calculated on a daily basis for each subsequent day's delay in payment);	(b) has (unless the sale is a standard-rated supply) made in relation to the lot a VAT option that remains valid and will not be revoked before completion .
	(c) on request, at the cost of the seller , assign to the seller or as the seller may direct the right to demand and sue for old arrears , such assignment to be in such form as the seller's conveyancer may reasonably require;	G15.3 The buyer confirms that:
	(d) if reasonably required, allow the seller's conveyancer to have on loan the counterpart of any tenancy against an undertaking to hold it to the buyer's order;	(a) it is registered for VAT , either in the buyer's name or as a member of a VAT group;
	(e) not without the consent of the seller release any tenant or surety from liability to pay arrears or accept a surrender of or forfeit any tenancy under which arrears are due; and	(b) it has made, or will make before completion , a VAT option in relation to the lot and will not revoke it before or within three months after completion ;
	(f) if the buyer disposes of the lot prior to recovery of all arrears obtain from the buyer's successor in title a covenant in favour of the seller in similar form to part 3 of this condition G11.	(c) article 5(2B) of the Value Added Tax (Special Provisions) Order 1995 does not apply to it; and
G11.9	Where the seller has the right to recover arrears it must not without the buyer's written consent bring insolvency proceedings against a tenant or seek the removal of goods from the lot .	(d) it is not buying the lot as a nominee for another person. The buyer is to give to the seller as early as possible before the agreed completion date evidence:
G12 Management		(a) of the buyer's VAT registration;
G12.1	This condition G12 applies where the lot is sold subject to tenancies .	(b) that the buyer has made a VAT option ; and
G12.2	The seller is to manage the lot in accordance with its standard management policies pending completion .	(c) that the VAT option has been notified in writing to HM Revenue and Customs; and if it does not produce the relevant evidence at least two business days before the agreed completion date , condition G14.1 applies at completion .
G12.3	The seller must consult the buyer on all management issues that would affect the buyer after completion (such as, but not limited to, an application for licence; a rent review; a variation, surrender, agreement to surrender or proposed forfeiture of a tenancy ; or a new tenancy or agreement to grant a new tenancy) and:	G15.5 The buyer confirms that after completion the buyer intends to:
	(a) the seller must comply with the buyer's reasonable	

- (a) retain and manage the **lot** for the **buyer's** own benefit as a continuing business as a going concern subject to and with the benefit of the **tenancies**; and (b) collect the rents payable under the **tenancies** and charge **VAT** on them
- G15.6 If, after **completion**, it is found that the sale of the **lot** is not a transfer of a going concern then:
- (a) the **seller's** conveyancer is to notify the **buyer's** conveyancer of that finding and provide a **VAT** invoice in respect of the sale of the **lot**;
- (b) the **buyer** must within five **business days** of receipt of the **VAT** invoice pay to the **seller** the **VAT** due; and (c) if **VAT** is payable because the **buyer** has not complied with this **condition** G15, the buyer must pay and indemnify the **seller** against all costs, interest, penalties or surcharges that the **seller** incurs as a result.
- G16 Capital allowances**
- G16.1 This **condition** G16 applies where the **special conditions** state that there are capital allowances available in respect of the **lot**.
- G16.2 The **seller** is promptly to supply to the **buyer** all information reasonably required by the **buyer** in connection with the **buyer's** claim for capital allowances.
- G16.3 The value to be attributed to those items on which capital allowances may be claimed is set out in the **special conditions**.
- G16.4 The **seller** and **buyer** agree:
- (a) to make an election on **completion** under Section 198 of the Capital Allowances Act 2001 to give effect to this **condition** G16; and
- (b) to submit the value specified in the **special conditions** to HM Revenue and Customs for the purposes of their respective capital allowance computations.
- G17 Maintenance agreements**
- G17.1 The **seller** agrees to use reasonable endeavours to transfer to the **buyer**, at the **buyer's** cost, the benefit of the maintenance agreements specified in the **special conditions**.
- G17.2 The **buyer** must assume, and indemnify the **seller** in respect of, all liability under such contracts from the **actual completion date**.
- G18 Landlord and Tenant Act 1987**
- G18.1 This **condition** G18 applies where the sale is a relevant disposal for the purposes of part I of the Landlord and Tenant Act 1987.
- G18.2 The **seller** warrants that the **seller** has complied with sections 5B and 7 of that Act and that the requisite majority of qualifying tenants has not accepted the offer.
- G19 Sale by practitioner**
- G19.1 This **condition** G19 applies where the sale is by a **practitioner** either as **seller** or as agent of the **seller**.
- G19.2 The **practitioner** has been duly appointed and is empowered to sell the **lot**.
- G19.3 Neither the **practitioner** nor the firm or any member of the firm to which the **practitioner** belongs has any personal liability in connection with the sale or the performance of the **seller's** obligations. The **transfer** is to include a declaration excluding that personal liability.
- G19.4 The **lot** is sold:
- (a) in its condition at **completion**;
- (b) for such title as the **seller** may have; and
- (c) with no title guarantee;
- and the **buyer** has no right to terminate the contract or any other remedy if information provided about the **lot** is inaccurate, incomplete or missing.
- G19.5 Where relevant:
- (a) the **documents** must include certified copies of those under which the **practitioner** is appointed, the document of appointment and the **practitioner's** acceptance of appointment; and
- (b) the **seller** may require the **transfer** to be by the lender exercising its power of sale under the Law of Property Act 1925.
- G19.6 The **buyer** understands this **condition** G19 and agrees that it is fair in the circumstances of a sale by a **practitioner**.
- G20 TUPE**
- G20.1 If the **special conditions** state "There are no employees to which **TUPE** applies", this is a warranty by the **seller** to this effect.
- G20.2 If the **special conditions** do not state "There are no employees to which **TUPE** applies" the following paragraphs apply:
- (a) The **seller** must notify the **buyer** of those employees whose contracts of employment will transfer to the **buyer** on **completion** (the "Transferring Employees"). This notification must be given to the **buyer** not less than 14 days before **completion**.
- (b) The **buyer** confirms that it will comply with its obligations under **TUPE** and any **special conditions** in respect of the Transferring Employees.
- (c) The **buyer** and the **seller** acknowledge that pursuant and subject to **TUPE**, the contracts of employment between the Transferring Employees and the **seller** will transfer to the **buyer** on **completion**.
- (d) The **buyer** is to keep the **seller** indemnified against all liability for the Transferring Employees after **completion**.
- G21 Environmental**
- G21.1 This **condition** G21 only applies where the **special conditions** so provide.
- G21.2 The **seller** has made available such reports as the **seller** has as to the environmental condition of the lot and has given the **buyer** the opportunity to carry out investigations (whether or not the **buyer** has read those reports or carried out any investigation) and the **buyer** admits that the **price** takes into account the environmental condition of the **lot**.
- G21.3 The **buyer** agrees to indemnify the **seller** in respect of all liability for or resulting from the environmental condition of the **lot**.
- G22 Service Charge**
- G22.1 This **condition** G22 applies where the lot is sold subject to **tenancies** that include service charge provisions.
- G22.2 No apportionment is to be made at **completion** in respect of service charges.
- G22.3 Within two months after **completion** the **seller** must provide to the **buyer** a detailed service charge account for the service charge year current on **completion** showing:
- (a) service charge expenditure attributable to each **tenancy**;
- (b) payments on account of service charge received from each tenant;
- (c) any amounts due from a tenant that have not been received;
- (d) any service charge expenditure that is not attributable to any **tenancy** and is for that reason irrecoverable.
- G22.4 In respect of each **tenancy**, if the service charge account shows that:
- (a) payments on account (whether received or still then due from a tenant) exceed attributable service charge expenditure, the **seller** must pay to the **buyer** an amount equal to the excess when it provides the service charge account;
- (b) attributable service charge expenditure exceeds payments on account (whether those payments have been received or are still then due), the **buyer** must use all reasonable endeavours to recover the shortfall from the tenant at the next service charge reconciliation date and pay the amount so recovered to the **seller** within five **business days** of receipt in cleared funds; but in respect of payments on account that are still due from a tenant **condition** G11 (**arrears**) applies.
- G22.5 In respect of service charge expenditure that is not attributable to any **tenancy** the **seller** must pay the expenditure incurred in respect of the period before **actual completion date** and the **buyer** must pay the expenditure incurred in respect of the period after **actual completion date**. Any necessary monetary adjustment is to be made within five **business days** of the **seller** providing the service charge account to the **buyer**.
- G22.6 If the **seller** holds any reserve or sinking fund on account of future service charge expenditure or a depreciation fund:
- (a) the **seller** must pay it (including any interest earned on it) to the **buyer** on **completion**; and
- (b) the **buyer** must covenant with the **seller** to hold it in accordance with the terms of the **tenancies** and to indemnify the **seller** if it does not do so.
- G23. Rent reviews**
- G23.1 This **condition** G23 applies where the **lot** is sold subject

	to a tenancy under which a rent review due on or before the actual completion date has not been agreed or determined.		the buyer in relation to the warranty as do not place the seller in breach of its terms or expose the seller to any liability or penalty.
G23.2	The seller may continue negotiations or rent review proceedings up to the actual completion date but may not agree the level of the revised rent or commence rent review proceedings without the written consent of the buyer , such consent not to be unreasonably withheld or delayed.	G26	No assignment The buyer must not assign, mortgage or otherwise transfer or part with the whole or any part of the buyer's interest under this contract .
G23.3	Following completion the buyer must complete rent review negotiations or proceedings as soon as reasonably practicable but may not agree the level of the revised rent without the written consent of the seller , such consent not to be unreasonably withheld or delayed.	G27	Registration at the Land Registry
G23.4	The seller must promptly: (a) give to the buyer full details of all rent review negotiations and proceedings, including copies of all correspondence and other papers; and (b) use all reasonable endeavours to substitute the buyer for the seller in any rent review proceedings.	G27.1	This condition G27.1 applies where the lot is leasehold and its sale either triggers first registration or is a registrable disposition. The buyer must at its own expense and as soon as practicable: (a) procure that it becomes registered at Land Registry as proprietor of the lot ; (b) procure that all rights granted and reserved by the lease under which the lot is held are properly noted against the affected titles; and (c) provide the seller with an official copy of the register relating to such lease showing itself registered as proprietor.
G23.5	The seller and the buyer are to keep each other informed of the progress of the rent review and have regard to any proposals the other makes in relation to it.	G27.2	This condition G27.2 applies where the lot comprises part of a registered title. The buyer must at its own expense and as soon as practicable: (a) apply for registration of the transfer ; (b) provide the seller with an official copy and title plan for the buyer's new title; and (c) join in any representations the seller may properly make to Land Registry relating to the application.
G23.6	When the rent review has been agreed or determined the buyer must account to the seller for any increased rent and interest recovered from the tenant that relates to the seller's period of ownership within five business days of receipt of cleared funds.	G28	Notices and other communications
G23.7	If a rent review is agreed or determined before completion but the increased rent and any interest recoverable from the tenant has not been received by completion the increased rent and any interest recoverable is to be treated as arrears .	G28.1	All communications, including notices, must be in writing. Communication to or by the seller or the buyer may be given to or by their conveyancers.
G23.8	The seller and the buyer are to bear their own costs in relation to rent review negotiations and proceedings.	G28.2	A communication may be relied on if: (a) delivered by hand; or (b) made electronically and personally acknowledged (automatic acknowledgement does not count); or (c) there is proof that it was sent to the address of the person to whom it is to be given (as specified in the sale memorandum) by a postal service that offers normally to deliver mail the next following business day .
G24	Tenancy renewals	G28.3	A communication is to be treated as received: (a) when delivered, if delivered by hand; or (b) when personally acknowledged, if made electronically; but if delivered or made after 1700 hours on a business day a communication is to be treated as received on the next business day .
G24.1	This condition G24 applies where the tenant under a tenancy has the right to remain in occupation under part II of the Landlord and Tenant Act 1954 (as amended) and references to notices and proceedings are to notices and proceedings under that Act.	G28.4	A communication sent by a postal service that offers normally to deliver mail the next following business day will be treated as received on the second business day after it has been posted.
G24.2	Where practicable, without exposing the seller to liability or penalty, the seller must not without the written consent of the buyer (which the buyer must not unreasonably withhold or delay) serve or respond to any notice or begin or continue any proceedings.	G29	Contracts (Rights of Third Parties) Act 1999 No one is intended to have any benefit under the contract pursuant to the Contract (Rights of Third Parties) Act 1999.
G24.3	If the seller receives a notice the seller must send a copy to the buyer within five business days and act as the buyer reasonably directs in relation to it.	G30	Extra General Conditions The following general conditions are to be treated as being amended as follows: the word "actual" shall be replaced by the word "agreed"
G24.4	Following completion the buyer must: (a) with the co-operation of the seller take immediate steps to substitute itself as a party to any proceedings; (b) use all reasonable endeavours to conclude any proceedings or negotiations for the renewal of the tenancy and the determination of any interim rent as soon as reasonably practicable at the best rent or rents reasonably obtainable; and (c) if any increased rent is recovered from the tenant (whether as interim rent or under the renewed tenancy) account to the seller for the part of that increase that relates to the seller's period of ownership of the lot within five business days of receipt of cleared funds.	G17.2	
G24.5	The seller and the buyer are to bear their own costs in relation to the renewal of the tenancy and any proceedings relating to this.	G25.3	(b) the words "or cost" shall be added at the end.
G25	Warranties		
G25.1	Available warranties are listed in the special conditions .		
G25.2	Where a warranty is assignable the seller must: (a) on completion assign it to the buyer and give notice of assignment to the person who gave the warranty; and (b) apply for (and the seller and the buyer must use all reasonable endeavours to obtain) any consent to assign that is required. If consent has not been obtained by completion the warranty must be assigned within five business days after the consent has been obtained.		
G25.3	If a warranty is not assignable the seller must after completion : (a) hold the warranty on trust for the buyer ; and (b) at the buyer's cost comply with such of the lawful instructions of		

Property auctions

☎ 0800 090 2200 | ✉ auction@bjbmail.com

Suite 1, Albion House, No.2 Etruria Office Village, Forge Lane, Festival Park,
Stoke-on-Trent, ST1 5RQ

In association with:

butters john bee ^{bjb}

haart

Darlows

HAYBROOK

Felicity J. Lord

 **CHEWTON ROSE**

HOWARDS

**Just
Mortgages**

 **JUST
WEALTH**

Valuation
Chartered Surveyors



lionTV
SCOTLAND

Homes

UNDER THE HAMMER

**HAVE YOU JUST PURCHASED A PROPERTY
AT AUCTION?**

**HAVE YOU EVER DREAMT OF BEING ON
BBC ONE'S HOMES UNDER THE HAMMER?**

We are currently on the look out for new properties to feature on the show. If you meet the conditions below, and are interested in finding out more, please get in touch with a member of our Bookings team using any of the following phone numbers:

**07814 079910,
07966 167076 OR 07929 829814**

CONDITIONS

You must have purchased a property through auction (either online, modern method, or traditional by room).

Residential auction must be for residential use (not commercial or for use as a business).

Not more than 10 years old (or less than 10 years old if you can legally complete and are not currently in possession).

We require at least 2 days' notice to your property. The first day of notice takes place after you complete your property purchase, and the second when we return to film your complete renovation.

QR CODE

