

# Property auction catalogue

**Monday 1st June, 2026  
6.30pm start**

**DoubleTree by Hilton Hotel  
Festival Park, Stoke-on-Trent  
Staffordshire, ST1 5BQ**



# Property auctions dates

**DoubleTree by Hilton Hotel,  
Stoke-on-Trent, ST1 5BQ**

**Auction Dates**

**1st June  
13th July  
14th September  
26th October  
7th December**

**Closing Date For Entries**

**24th April  
5th June  
7th August  
18th September  
30th October**

**Freehold & Leasehold Lots offered in conjunction with...**



**Hibberts LLP**  
Solicitors

**martinkaye LLP**



**HALL SMITH WHITTINGHAM**  
SOLICITORS & HIGHER COURT ADVOCATES  
LLP

City of  
**Stoke-on-Trent**



**WALTERS & PLASKITT**  
SOLICITORS



# The region's number 1 property auctioneer butters john bee<sup>bjb</sup>



## butters john bee Traditional Auctioneers with over 150 years' experience of selling Residential & Commercial property and Land.

Auction remains the fastest, most exciting and most efficient way to buy and sell property in today's fast-moving market. And with online bidding now more popular than ever, you can get involved from anywhere in the country, bringing unbeatable convenience and opening the door to even more opportunity.

2025 has been a standout year for our auction success, we're not just keeping pace with the market, we are continually driving forward, and by teaming up with our wider group and sister brands under the Spicerhaart umbrella, we've expanded our reach, strengthened our presence, and created a truly nationwide auction powerhouse.

Whether you're buying or selling, you're supported every step of the way. Our award-winning Auction Department works hand-in-hand with a strong network of Residential offices, Area Partners, and our Commercial and Land & New Homes specialists. That means you benefit from expert guidance, genuine local knowledge, and a team of property professionals who live and breathe auctions.

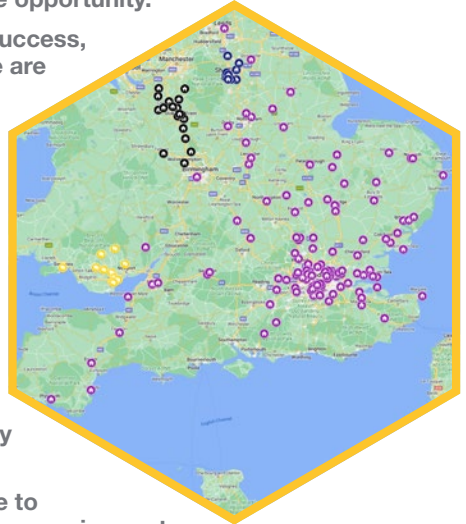
**One Stop Lot Shop - Butters John Bee** introduce to **Just Mortgages** for your mortgage and protection requirements.

Just Mortgages is a trading name of Just Mortgages Direct Limited which is an appointed representative of The Openwork Partnership, a trading style of Openwork Limited which is authorised and regulated by the Financial Conduct Authority. Just Mortgages Direct Limited Registered Office: Colwyn House, Sheepen Place, Colchester, Essex, C03 3LD. Registered in England No. 2412345.

**YOUR PROPERTY MAY BE REPOSSESSED IF YOU DO NOT KEEP UP REPAYMENTS ON YOUR MORTGAGE.**

Valuation can help you with your survey needs nationwide, and we can recommend a good local Conveyancer, we also have Residential and Commercial Lettings agencies.

**Any queries about buying or selling at auction then contact the team on 0800 090 2200, or email [auction@bjbmail.com](mailto:auction@bjbmail.com), and we will be happy to help.**



# Proof of identity and address

All prospective bidders must register and provide proof of identity and address to the Auctioneers prior to the start of the sale.

**Original documents MUST be provided.**

**Photocopies are NOT acceptable.**

You will need to register before the auction starts if you are intending to bid, as we are required to verify anyone who offers, bids, or buys at butters john bee auctions.

**In each case, for proof of ID we will need one item from List A, (if you cannot produce any of the items on list A, then you must produce two of the items on list B). For proof of address one item from List C (If an item is used from List B for the purposes of identity, the same item may NOT be used for the purposes of proof of address) Failure to produce the correct ID will mean you will NOT be eligible to bid on the night.**

There are a few options available to you:

- Go to any of our 17 branches, or head office, with your original paperwork, we will then verify for you free of charge
- The Post Office can verify up to three forms of identification, there is however a charge for this service
- A professional body (solicitor, accountant etc.) can also certify your ID and directly send it on your behalf to [auctions@bjbmail.com](mailto:auctions@bjbmail.com) (please note these parties may make a charge directly to you)
- You can bring the relevant documents to the auction venue between 5.00pm and 6.30pm to register free of charge

If you intend to bid via the Internet, Telephone or Proxy, we will require this information prior to the day of the auction. If we do not receive certified identification, we will be unable to bid on your behalf.

If you are bidding on behalf of a company, you will also need to show a copy of the Certificate of Incorporation, a list of directors and a letter of authority on Company letterhead, signed by a company director, prior to signing the contract.

## List A – proof of ID

- Current valid (signed) full UK Passport.
- Current valid (signed) overseas Passport.
- Current UK Photocard Driving Licence (provisional acceptable).
- Current EU Photocard Driving Licence.
- Current valid EEA Member State ID card.
- Current biometric residence permit issued by UK Border Agency.
- Current Firearms/Shotgun Certificate.

### **List B – proof of ID**

- Bank, Building Society or Credit Union Statement dated within the last 3 months (not printed off the internet).
- Benefits or pensions notification letter confirming the right to benefit.
- Blue disabled drivers pass.
- Current UK paper driving licence.
- Local authority tax bill/council tax bill (we can only accept bills dated until the end of June of the year the client contract is signed).
- Medical Card/Certificate.
- National Insurance Card.
- UK Birth Certificate.
- Utility Bill/Utility Statement or Certificate/Letter from a supplier of utilities dated within the last 3 months.

### **List C – proof of address**

- Bank Statement (dated in the last three months) - may be an e-copy
- Credit Card Statement (dated in the last three months) - may be an e-copy
- Council Tax bill (we can only accept bills dated until the end of June of the year the client contract is signed)
- Current mortgage statement (correspondence address and address the mortgage applies to must be the same)
- Current TV licence
- Driving licence showing current address (paper OR card version) (provisional acceptable) (not acceptable if used as ID)
- Homeowner's current home insurance policy schedule
- Home service provider bill, such as broadband or digital TV dated within the last three months
- Letter from the employer on company headed paper, signed and dated within the last three months (an email from a verified company email address is acceptable)
- Recent documentation confirming the applicant will be/is receiving local housing allowance or housing benefit
- Tenancy agreement signed and dated within the last six months (the customer being checked must be a named tenant on the tenancy agreement)
- Utility bill dated within the last three months
- Letter from the NHS writing to confirm the customer is living at the address
- Letter from bank to confirm the customer is living at the property - no other bank letter is acceptable

#### **The following forms of proof of address are not acceptable:**

1. HM Revenue & Customs documents
2. Letters from accountants or solicitors
3. Mobile phone bills
4. NHS medical card

# Property auction

## buyer's guide

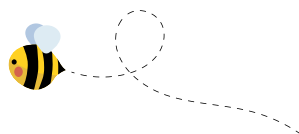
Buying at auction is becoming far more popular with the public, many of whom have never previously attended a property auction. We have drawn up some basic guidelines to ensure that clients maximise their opportunity to take advantage of such a wide variety of properties available at one venue.

- Think ahead, butters john bee hold regular auction sales with a catalogue printed some weeks in advance. Either buy a catalogue from one of our offices or download one FREE of charge from our website [buttersjohnbee.com](http://buttersjohnbee.com)
- Read the catalogue carefully. Each of our properties carries a brief description. Read our details thoroughly and identify the properties you are interested in.
- Take a look at the property you are interested in. Contact the office listed for viewing arrangements or see the relevant viewing schedule.
- Take legal advice. Purchasing a property at auction is a firm commitment that carries the same legal implications as a signed contract by private treaty. In most cases we have copies of legal documents in our possession, or your solicitor may wish to contact the vendor's solicitor, these legal packs can often be downloaded from our website.
- Read the general conditions of sale at the rear of the catalogue.
- Get a copy of the addendum. These are available online and contain any late amendments, information or alterations.
- Plan ahead if you require mortgage assistance. Note that prospective purchasers should have the necessary mortgage advice well in advance of future auctions.
- Leave time to get a valuation done if required. Your mortgage finance may be reliant upon the results, not to mention your peace of mind.
- Organise your deposit before the auction. We will ask for a deposit 10% of the hammer price (Subject to a minimum of £3,000) once you are the winning bidder, payable on signing the contracts on the day of the auction sale. Your Bank or building Society should be made aware of this. The balance of the monies will normally be due within 20 business days from exchange. In addition a buyers administration fee will be applicable to each lot purchased, as specified in the individual property details (still applicable if purchased Prior or Post auction) Credit cards cannot be used for the 10% deposit payment, we can accept payment via Debit card, BACS or cheque.
- Make sure the Auctioneer has your bid, by clearly indicating with catalogue or hand.
- Ensure that you have registered with us before the auction starts, and supplied your two forms of identification. You can do this on the night of the auction, just arrive a bit early to give yourself enough time, or you can go into any of our 17 High Street branches prior to the sale and they will certify you ID free of charge. Original documents MUST be provided, photocopies are NOT acceptable. We will also accept certified ID sent direct from a solicitor or professional body.

- Check that the properties included in the catalogue will be offered on the day of the sale. Some may be withdrawn, and some may be sold prior to auction.
- Keep calm. Our Auctioneers understand the pressure that first time auction buyers can experience in the sale room, and will be as helpful as possible.
- Arrive in plenty of time. It is useful to get some knowledge of how sales are conducted by seeing other lots being sold.
- If the lot you're bidding for fails to make its reserve it may be that the vendor will decide to accept your bid later so make sure you leave your details with us.
- Be ready to sign immediately when the hammer falls. We shall have a copy of the contract available soon after the hammer falls.
- Be positive, with the right forward planning and research you will find an auction a speedy and simple way of buying a property.
- This catalogue contains details about properties being sold at auction. Those details are subject to change up to and including the day of the auction. Please check our website regularly at [buttersjohnbee.com](http://buttersjohnbee.com) and look out for any additional materials available on the day of the auction, in order to stay fully informed with the up to date information.
- **Guide Price:** An indication of the seller's current minimum acceptable price at auction. The guide price or range of guide prices is given to assist consumers in deciding whether or not to pursue a purchase. It is usual, but not always the case, that a provisional reserve range is agreed between the seller and the auctioneer at the start of marketing. As the reserve is not fixed at this stage and can be adjusted by the seller at any time up to the day of the auction in the light of interest shown during the marketing period, a guide price is issued. This guide price can be shown in the form of a minimum and maximum price range within which an acceptable sale price (reserve) would fall, or as a single price figure within 10% of which the minimum acceptable price (reserve) would fall. A guide price is different to a reserve price (see separate definition). Both the guide price and the reserve price can be subject to change up to and including the day of the auction.
- **Reserve Price:** the seller's minimum acceptable price at auction and the figure below which the auctioneer cannot sell. The reserve price is not disclosed and remains confidential between the seller and the auctioneer. Both the guide price and the reserve price can be subject to change up to and including the day of the auction.

## Join the **bjb** hive with our **FREE Lettings Switch Service**

Call us on **01782 211120**  
to find out more.

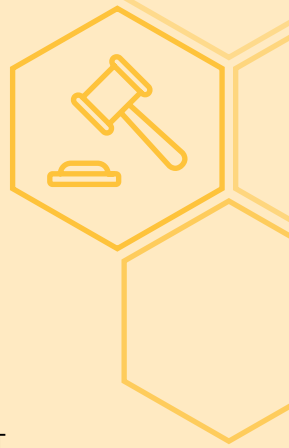


# Order of sale

(unless previously sold or withdrawn, please check the Addendum online for updates)

**DoubleTree by Hilton Hotel, Festival Park,  
Stoke-on-Trent, Staffordshire, ST1 5BQ**

**Monday 20th April 2026 at 6.30pm**



- 1 4, Portland Street, Hanley, Stoke-on-Trent, Staffordshire, ST1 5HZ
- 2 23, Beckton Avenue, Tunstall, Stoke-on-Trent, Staffordshire, ST6 6ET
- 3 82, Underwood Lane, Crewe, Cheshire, CW1 3LE
- 4 14, Springfields Road, Trent Vale, Newcastle-under-Lyme, Staffordshire, ST4 6RU
- 5 7, Freeman Street, Stafford, Staffordshire, ST16 3HY
- 6 43, Oversley Road, Chell, Stoke-on-Trent, Staffordshire, ST6 6TY
- 7 175, Dartmouth Avenue, Newcastle-under-Lyme, Staffordshire, ST5 3PB
- 8 Land & Garages R/O, Broad Street, Crewe, Cheshire, CW1 4JJ
- 9 Flat 516 Prosperity House, Gower Street, Derby, DE1 1AW
- 10 Land adj 20, Fraser Street, Cobridge, Stoke-On-Trent, Staffordshire, ST6 2DP
- 11 Land adj 21, Fraser Street, Cobridge, Stoke-On-Trent, Staffordshire, ST6 2DP
- 12 86, Middlewich Street, Crewe, Cheshire, CW1 4DH
- 13 10, Hightown, Sandbach, Cheshire, CW11 1AE
- 14 37, Lilian Close, Hellesdon, Norwich, Norfolk, NR6 6RZ
- 15 42, Heatley Lane, Broomhall, Nantwich, Cheshire, CW5 8BA
- 16 Dale Cottage, Leadendale Lane, Rough Close, Stoke-on-Trent, Staffordshire, ST3 7NL
- 17 Former BT Exchange, Talke Road, Newcastle-Under-Lyme, Staffordshire, ST5 7AL
- 18 6, Brunswick Place, Hanley, Stoke-on-Trent, Staffordshire, ST1 3DD
- 19 1, Athol Avenue, Crewe, Cheshire, CW2 6JH
- 20 Former Beardmore & Smith Limited, Meadow Street, Chesterton, Newcastle-under-Lyme, Staffordshire, ST5 7HU
- 21 349, West Street, Crewe, Cheshire CW1 3HY
- 22 39, Severn Drive, Seabridge, Newcastle-under-Lyme, Staffordshire, ST5 4BH
- 23 Flat 64, Kingswood Park, Manley, Frodsham, Cheshire West, WA6 6EH
- 24 155, Olive Grove Road, Lowfield, Sheffield S2 3GE
- 25 54, Queens Park Gardens, Crewe, Cheshire, CW2 7SW
- 26 83, Wilding Road, Ball Green, Stoke-on-Trent, Staffordshire, ST6 8BQ
- 27 Westward Ho, Peggys Bank, Wood Lane, Newcastle-under-Lyme, Staffordshire, ST7 8RH

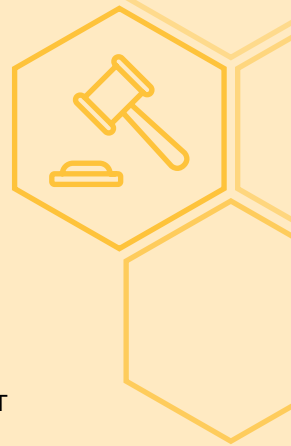
- 28 Land at Peggys Bank, Wood Lane, Newcastle-under-Lyme, Staffordshire, ST7 8RH
- 29 Woodland at Peggys Bank, Wood Lane, Newcastle-under-Lyme, Staffordshire, ST7 8RH
- 30 Craig Y Don, Marsh Lane, Nantwich, Cheshire, CW5 8PA
- 31 27, 29, 31, Sandon Road, Stafford, Staffordshire, ST16 3ES
- 32 Flat 49 The Ice House, Belward Street, Nottingham, NG1 1JW
- 33 Flat 78 The Atrium, Waterfront Plaza, Nottingham, NG2 3BT
- 34 Former Pentecostal Church, The Avenue, Kidsgrove, Stoke-On-Trent, , ST7 1AL
- 35 Unit 4 Parkhall Works, Sutherland Road, Stoke-on-Trent, Staffordshire ST3 1HJ
- 36 105, Field Lane, Wistaston, Crewe, Cheshire, CW2 8ST
- 37 Land near, Marston Road, Stafford, Staffordshire, ST16 3BX
- 38 49, Delamere Street, Winsford, Cheshire, CW7 2LX
- 39 20, Boylestone Road, Littleover, Derby, DE23 2PL
- 40 Land at, Peel Terrace, Stafford, Staffordshire, ST16 3BX
- 41 75, Elgin Street, Shelton, Stoke-on-Trent, Staffordshire, ST4 2RD
- 42 16 & 16a, Walthall Street, Crewe, Cheshire, CW2 7JZ
- 43 17, Victoria Street, Abertillery, Blaenau Gwent, S. Wales, NP13 1PG
- 44 11, Cotesheath Street, Hanley, Stoke-on-Trent, Staffordshire, ST1 3JB
- 45 300, Walthall Street, Crewe, Cheshire, CW2 7LE
- 46 499, High Street, Tunstall, Stoke-on-Trent, Staffordshire, ST6 5PB
- 47 18, Shropshire Street Market Drayton, Shropshire, TF9 3BY
- 48 70, West Avenue, Rudeheath, Northwich, Cheshire, CW9 7ES
- 49 14, Westfields, Cauldon Low, Stoke-on-Trent, Staffordshire Moorlands, ST10 3ED
- 50 58, Haybridge Road, Hadley, Telford, Shropshire, TF1 6LR
- 51 31, St Andrews Court, Atholl Avenue, Crewe, Cheshire, CW2 6LF
- 52 23, Sherratt Street, Bradley, Stoke-on-Trent, Staffordshire, ST6 7NT
- 53 Apartment 23, Alexandra House, 47, Rutland Street, Leicester, LE1 1SE
- 54 264, Middlewich Street, Crewe, Cheshire, CW1 4DP
- 55 164, Hanley Road, Hanley, Stoke-on-Trent, Staffordshire, ST1 6BL
- 56 16, John Offley Road, Madeley, Newcastle-under-Lyme, Staffordshire, CW3 9ND
- 57 27, Ian Road, Newchapel, Newcastle-under-Lyme, Staffordshire, ST7 4PP
- 58 23, Hungerford Road, Crewe, Cheshire, CW1 5EQ
- 59 29, Kelvin Avenue, Sneyd Green, Stoke-on-Trent, Staffordshire, ST1 6BP
- 60 39, Woodgate Street, Meir, Stoke-on-Trent, Staffordshire, ST3 6BS
- 61 22, East Lawns, Betley, Staffordshire, CW3 9AG

# Order of sale (in alphabetical order)

**(unless previously sold or withdrawn, please check the Addendum online for updates)**

**DoubleTree by Hilton Hotel, Festival Park,  
Stoke-on-Trent, Staffordshire, ST1 5BQ**

**Monday 20th April 2026 at 6.30pm**



- 19 1, Athol Avenue, Crewe, Cheshire, CW2 6JH
- 2 23, Beckton Avenue, Tunstall, Stoke-on-Trent, Staffordshire, ST6 6ET
- 32 Flat 49 The Ice House, Belward Street, Nottingham, NG1 1JW
- 39 20, Boilestone Road, Littleover, Derby, DE23 2PL
- 8 Land & Garages R/O, Broad Street, Crewe, Cheshire, CW1 4JJ
- 18 6, Brunswick Place, Hanley, Stoke-on-Trent, Staffordshire, ST1 3DD
- 44 11, Cotesheath Street, Hanley, Stoke-on-Trent, Staffordshire, ST1 3JB
- 7 175, Dartmouth Avenue, Newcastle-under-Lyme, Staffordshire, ST5 3PB
- 38 49, Delamere Street, Winsford, Cheshire, CW7 2LX
- 61 22, East Lawns, Betley, Staffordshire, CW3 9AG
- 41 75, Elgin Street, Shelton, Stoke-on-Trent, Staffordshire, ST4 2RD
- 36 105, Field Lane, Wistaston, Crewe, Cheshire, CW2 8ST
- 10 Land adj 20, Fraser Street, Cobridge, Stoke-On-Trent, Staffordshire, ST6 2DP
- 11 Land adj 21, Fraser Street, Cobridge, Stoke-On-Trent, Staffordshire, ST6 2DP
- 5 7, Freeman Street, Stafford, Staffordshire, ST16 3HY
- 9 Flat 516 Prosperity House, Gower Street, Derby, DE1 1AW
- 55 164, Hanley Road, Hanley, Stoke-on-Trent, Staffordshire, ST1 6BL
- 50 58, Haybridge Road, Hadley, Telford, Shropshire, TF1 6LR
- 15 42, Heatley Lane, Broomhall, Nantwich, Cheshire, CW5 8BA
- 46 499, High Street, Tunstall, Stoke-on-Trent, Staffordshire, ST6 5PB
- 13 10, Hightown, Sandbach, Cheshire, CW11 1AE
- 58 23, Hungerford Road, Crewe, Cheshire, CW1 5EQ
- 57 27, Ian Road, Newchapel, Newcastle-under-Lyme, Staffordshire, ST7 4PP
- 56 16, John Offley Road, Madeley, Newcastle-under-Lyme, Staffordshire, CW3 9ND
- 59 29, Kelvin Avenue, Sneyd Green, Stoke-on-Trent, Staffordshire, ST1 6BP
- 23 Flat 64, Kingswood Park, Manley, Frodsham, Cheshire West, WA6 6EH
- 16 Dale Cottage, Leadendale Lane, Rough Close, Stoke-on-Trent, Staffordshire, ST3 7NL
- 14 37, Lilian Close, Hellesdon, Norwich, Norfolk, NR6 6RZ

- 30 Craig Y Don, Marsh Lane, Nantwich, Cheshire, CW5 8PA
- 37 Land near, Marston Road, Stafford, Staffordshire, ST16 3BX
- 20 Former Beardmore & Smith Limited, Meadow Street, Chesterton, Newcastle-under-Lyme, Staffordshire, ST5 7HU
- 12 86, Middlewich Street, Crewe, Cheshire, CW1 4DH
- 54 264, Middlewich Street, Crewe, Cheshire, CW1 4DP
- 24 155, Olive Grove Road, Lowfield, Sheffield S2 3GE
- 6 43, Oversley Road, Chell, Stoke-on-Trent, Staffordshire, ST6 6TY
- 40 Land at, Peel Terrace, Stafford, Staffordshire, ST16 3BX
- 1 4, Portland Street, Hanley, Stoke-on-Trent, Staffordshire, ST1 5HZ
- 25 54, Queens Park Gardens, Crewe, Cheshire, CW2 7SW
- 53 Apartment 23, Alexandra House, 47, Rutland Street, Leicester, LE1 1SE
- 31 27, 29, 31, Sandon Road, Stafford, Staffordshire, ST16 3ES
- 22 39, Severn Drive, Seabridge, Newcastle-under-Lyme, Staffordshire, ST5 4BH
- 52 23, Sherratt Street, Bradley, Stoke-on-Trent, Staffordshire, ST6 7NT
- 47 18, Shropshire Street Market Drayton, Shropshire, TF9 3BY
- 4 14, Springfields Road, Trent Vale, Newcastle-under-Lyme, Staffordshire, ST4 6RU
- 51 31, St Andrews Court, Atholl Avenue, Crewe, Cheshire, CW2 6LF
- 35 Unit 4 Parkhall Works, Sutherland Road, Stoke-on-Trent, Staffordshire ST3 1HJ
- 17 Former BT Exchange, Talke Road, Newcastle-Under-Lyme, Staffordshire, ST5 7AL
- 34 Former Pentecostal Church, The Avenue, Kidsgrove, Stoke-On-Trent, ST7 1AL
- 3 82, Underwood Lane, Crewe, Cheshire, CW1 3LE
- 43 17, Victoria Street, Abertillery, Blaenau Gwent, S. Wales, NP13 1PG
- 42 16 & 16a, Walthall Street, Crewe, Cheshire, CW2 7JZ
- 45 300, Walthall Street, Crewe, Cheshire, CW2 7LE
- 33 Flat 78 The Atrium, Waterfront Plaza, Nottingham, NG2 3BT
- 48 70, West Avenue, Rudeheath, Northwich, Cheshire, CW9 7ES
- 21 349, West Street, Crewe, Cheshire CW1 3HY
- 49 14, Westfields, Cauldon Low, Stoke-on-Trent, Staffordshire Moorlands, ST10 3ED
- 26 83, Wilding Road, Ball Green, Stoke-on-Trent, Staffordshire, ST6 8BQ
- 27 Westward Ho, Peggys Bank, Wood Lane, Newcastle-under-Lyme, Staffordshire, ST7 8RH
- 28 Land at Peggys Bank, Wood Lane, Newcastle-under-Lyme, Staffordshire, ST7 8RH
- 29 Woodland at Peggys Bank, Wood Lane, Newcastle-under-Lyme, Staffordshire, ST7 8RH
- 60 39, Woodgate Street, Meir, Stoke-on-Trent, Staffordshire, ST3 6BS



# Proof of identity and address

A Buyers Administration Fee will be payable on exchange, as specified on the property listing, is applicable to all lots sold at, pre or post auction.

All potential bidders will need to register prior to the auction, and provide proof of identity and address to enable you to bid at our sales. (See 'Proof of Identity' at front of the catalogue).

If the buyer's details are different from the successful bidder's, then the buyer will also be required to submit their details as above.

If the successful bidder is buying on behalf of a company we also require a letter from that company on their letterhead authorising the bidder to bid on their behalf, the bidder will still be required to produce their details as above.

**Every buyer will be photographed at the auction before the contract is signed.**

# Just mortgage and protection advice



## Won at Auction? Don't Let Finance Hold You Back.

Fast, reliable auction finance designed to meet tight completion deadlines. Access funds quickly, move with confidence, and secure your purchase without the stress.

## 28 Days. No Delays.

Auction purchases move fast – so should your finance. Our specialist auction funding solutions are built for speed, certainty, and smooth completion.

## See It. Bid on It. Fund It.

Specialist auction finance tailored for investors who need flexibility and speed. Whether refurb, flip, or hold – we'll help you make it happen.

We offer a range of no obligation advice. Book your appointment now.

**YOUR PROPERTY MAY BE REPOSSESSED IF YOU DO NOT KEEP UP REPAYMENTS ON YOUR MORTGAGE.**

[www.justmortgages.co.uk](http://www.justmortgages.co.uk)

Just Mortgages is a trading name of Just Mortgages Direct Limited which is an appointed representative of The Openwork Partnership, a trading style of Openwork Limited which is authorised and regulated by the Financial Conduct Authority. Approved by The Openwork Partnership on 24/02/2026.

**Just  
Mortgages**



# Bid live online!

All our sales are broadcast live in conjunction with Essential Information Group.

## What does the service cost?

Nothing! It's free, you pay the same as any buyer who attends the auction.

## Can I just watch?

Yes, many people use the service just to watch the auction.

## How does the bidding work?

You are in complete control. The dashboard will show you the current highest bid, and the amount the Auctioneer is looking for for the next bid, if you want to offer that amount simply hit the Bid button. When the hammer goes down the system will show if yours was the winning bid.

## Can I bid on more than one property?

Yes of course, you just need to let us know when you register what Lots you are interested in so we can approve you to bid.

## How does the auctioneer know I'm bidding?

The auctioneer has a monitor next to the rostrum that shows him your bid, and he can talk to you via the camera. Don't worry, you can see him but he can't see you!

## What about the deposit?

If you are the successful bidder, please be ready for us to call once the hammer goes down to process a card payment for the 10% Deposit and the Buyers Administration fee.

Email [auction@bjbmail.com](mailto:auction@bjbmail.com) for your registration form.

**essential**  
information group

LOT  
**01**

\*Guide price  
**£23,000 plus**

Scan or Click  
for further  
information.



This property has a full schedule of re-build works attached, to be set up by the local authority Stoke-on-Trent Council

## **4 Portland Street, Hanley, Stoke-on-Trent, Staffordshire, ST1 5HZ**

- End-terrace house
- Two bedrooms
- In need of renovation & repair
- Freehold
- Council Tax – A
- EPC – TBC

### **Legal Representative**

Christopher Parry  
Legal Practise Support Stoke Gov  
**T 01782 235814**  
**E Christopher.parry@stoke.gov.uk**

### **To apply contact:**

Hanley bjb  
**T 01782 202600**  
**E hanley@bjbmail.com**

LOT  
**02**

\*Guide price  
**£60,000 plus**

Scan or Click  
for further  
information.



It is our understanding that the above property may have suffered structural movement, therefore it is suggested that potential purchasers carry out their own structural investigations prior to bidding

## **23 Beckton Avenue, Tunstall, Stoke-on-Trent, Staffordshire, ST6 6ET**

- End townhouse
- Two bedrooms
- In need of renovation & repair
- Gardens front & rear
- Freehold
- Council Tax – A
- EPC - D

### **Legal Representative**

Ayesha Hanrahan  
Wedlake Bell LLP  
T 020 7395 3000  
E [ahanrahan@wedlakebell.com](mailto:ahanrahan@wedlakebell.com)

### **To apply contact:**

Auction BJB  
T 01782 211180  
E [auction@bjbmail.com](mailto:auction@bjbmail.com)

LOT  
**03**

\*Guide price  
**£59,500 plus**

Scan or Click  
for further  
information.



## 82 Underwood Lane, Crewe, Cheshire, CW1 3LE

- Mid-terrace house
- Two bedrooms
- In need of modernisation
- Freehold
- Council Tax – A
- EPC – TBC

### Legal Representative

Zara Bandy

Slater Heelis

T 0161 6721445

E [Zara.bandy@slaterheelis.co.uk](mailto:Zara.bandy@slaterheelis.co.uk)

### To apply contact:

Crewe BJB

T 01270 213541

E [crewe@bjbmail.com](mailto:crewe@bjbmail.com)

LOT  
**04**

\*Guide price  
**£73,000 plus**

Scan or Click  
for further  
information.



It is our understanding that this property is considered to be of a non-traditional construction and we therefore suggest that interested parties make enquiries of mortgage lenders as to whether the property is considered suitable for mortgage purposes

## 14 Springfields Road, Trent Vale, Newcastle-under-Lyme, Staffordshire, ST4 6RU

- Semi-detached house
- Three bedrooms
- In need of modernisation
- Rear garden
- Off road parking
- Freehold
- Council Tax - A
- EPC - TBC

### Legal Representative

Tracy Wilcocks  
Goddard Dunbar  
T 01782 284320  
E [tracy@goddarddunbar.co.uk](mailto:tracy@goddarddunbar.co.uk)

### To apply contact:

Newcastle bjb  
T 01782 622155  
E [newcastle@bjbmail.com](mailto:newcastle@bjbmail.com)

LOT  
**05**

\*Guide price  
**£72,000 plus**

Scan or Click  
for further  
information.



It is our understanding that the above property may have suffered structural movement, therefore it is suggested that potential purchasers carry out their own structural investigations prior to bidding

## 7 Freemen Street, Stafford, Staffordshire, ST16 3HY

- Mid-terrace house
- Two bedrooms
- In need of renovation & repair
- Currently tenanted (due to vacate)
- Freehold
- Council Tax – A
- EPC – E

### Legal Representative

Kerry Dundas  
Dundas Law  
T 01782 528338  
E [kerry@dundaslaw.co.uk](mailto:kerry@dundaslaw.co.uk)

### To apply contact:

Stafford BJB  
T 01785 246000  
E [stafford@bjbmail.com](mailto:stafford@bjbmail.com)

LOT  
**06**

\*Guide price  
**£64,000 plus**

Scan or Click  
for further  
information.



## 43 Oversley Road, Chell, Stoke-on-Trent, Staffordshire, ST6 6TY

- Semi-detached house
- Three bedrooms
- In need of modernisation
- Freehold
- Council Tax – A
- EPC – D

### Legal Representative

Louise Robinson  
Goddard Dunbar  
T 01782 528338  
E [kerry@dundaslaw.co.uk](mailto:kerry@dundaslaw.co.uk)

### To apply contact:

Hanley bjb  
T 01782 202600  
E [hanley@bjbmail.com](mailto:hanley@bjbmail.com)

LOT  
**07**

\*Guide price  
**£200,000 plus**

Scan or Click  
for further  
information.



## **175 Dartmouth Avenue, Westlands, Newcastle-under-Lyme, Staffordshire, ST5 3NP**

- Semi-detached house
- Three bedrooms
- In need of modernisation
- Corner plot
- Freehold
- Council Tax - C
- EPC - TBC

### **Legal Representative**

Rukhsana Shah  
Wrigleys Solicitors LLP  
**T** 0114 267 5588  
**E** [rukhsana.shah@wrigleys.co.uk](mailto:rukhsana.shah@wrigleys.co.uk)

### **To apply contact:**

Newcastle bjb  
**T** 01782 622155  
**E** [newcastle@bjbmail.com](mailto:newcastle@bjbmail.com)

LOT  
**08**

53.6m

\*Guide price  
**£5,000 plus**

Scan or Click  
for further  
information.



## Land & Garages R/O Broad Street, Crewe, Cheshire, CW1 4JJ

- Two domestic garages
- Site Area: 0.013 Acre (51 sq. m)
- Potential for alternative uses STPP
- Located within Cheshire East Council
- Freehold
- Council Tax Band - N/A
- EPC - N/A

### Legal Representative

Nikki Platt

Hibberts

T 01270 215117

E [nap@hibberts.com](mailto:nap@hibberts.com)

### To apply contact:

Land & New Homes bjb

T 01782 211147

E [residential-land@bjbmail.com](mailto:residential-land@bjbmail.com)

LOT  
09



\*Guide price  
**£35,000**

Scan or Click  
for further  
information.



## Flat 516 Prosperity House, Gower Street, Derby, DE1 1AW

- Upper floor flat
- Two bedrooms
- In need of modernisation
- Leasehold – 240 years
- Council Tax – B
- EPC – TBC

### Legal Representative

Hannah Macheon

Taylor Emmet

T 01270 653181

E [hannah.stazaker@goddarddunbar.co.uk](mailto:hannah.stazaker@goddarddunbar.co.uk)

### To apply contact:

Derby haart

T 01332 361621

E [DerbyHRT@spicerhaart.co.uk](mailto:DerbyHRT@spicerhaart.co.uk)

LOT  
**10**

\*Guide price  
**£10,000 plus**

Scan or Click  
for further  
information.



## Land adj 20 Fraser Street, Cobridge, Stoke-On-Trent, Staffordshire, ST6 2DP

- Vacant land
- Site Area: 0.06 Acre (243 sq. m)
- Potential for Alternative Uses STPP
- Located within Stoke-on-Trent City Council
- Freehold
- EPC - N/A

### Legal Representative

Jack Marr  
Chambers Fletcher  
T 01606 780400  
E [Jack@chambersfletcher.co.uk](mailto:Jack@chambersfletcher.co.uk)

### To apply contact:

Land & New Homes bjb  
T 01782 211147  
E [residential-land@bjbmail.com](mailto:residential-land@bjbmail.com)

LOT  
**11**

\*Guide price  
**£10,000 plus**

Scan or Click  
for further  
information.



## Land adj 21 Fraser Street, Cobridge, Stoke-On-Trent, Staffordshire, ST6 2DP

- Vacant Land
- Site Area: 0.03 Acre (106 sq. m)
- Potential for Alternative Uses STPP
- Located within Stoke-on-Trent City Council
- Freehold
- EPC - N/A

### Legal Representative

Jack Marr

Chambers Fletcher

T 01606 780400

E [Jack@chambersfletcher.co.uk](mailto:Jack@chambersfletcher.co.uk)

### To apply contact:

Land & New Homes bjb

T 01782 211147

E [residential-land@bjbmail.com](mailto:residential-land@bjbmail.com)

LOT  
**12**

\*Guide price  
**£81,000 plus**

Scan or Click  
for further  
information.



**86 Middlewich Street, Crewe, Cheshire, CW1 4DQ**

- End-terrace house
- Two bedrooms
- In need of modernisation
- Freehold
- Council Tax – A
- EPC – D

**Legal Representative**

Tracy Wilcocks  
Goddard Dunbar  
T 01782 284320  
E [tracy@goddarddunbar.co.uk](mailto:tracy@goddarddunbar.co.uk)

**To apply contact:**

Crewe bjb  
T 01270 213541  
E [crewe@bjbmail.com](mailto:crewe@bjbmail.com)

LOT  
**13**

\*Guide price  
**£80,000 plus**

Scan or Click  
for further  
information.



## 10 Hightown, Sandbach, Cheshire, CW11 1AE

- Former Bank premises
- Grade II Listed
- Possible development opportunity STPP
- Freehold
- Rateable Value £33,500 p/a
- EPC - TBC

### Legal Representative

Jason King  
Rutherfords LLP  
T 01827 311411  
E [j.king@rutherfordslegal.com](mailto:j.king@rutherfordslegal.com)

### To apply contact:

Commercial  
T 01782 212201  
E [commercial@bjbmail.com](mailto:commercial@bjbmail.com)



## Commercial Auctions

**Have you considered Public Auction as a means to sell your Commercial Property?**

**87.5% Sold\***

Our auction is suitable for all commercial property including investments, shops, industrial & offices

- Attracts cash rich purchasers
- Completion within 20 working days
- The only way to find 'best value'
- Catalogues sent to 8,500 people

Interested in finding out more?  
Call **01782 212201**  
or email [commercial@bjbmail.com](mailto:commercial@bjbmail.com)  
and receive £150 discount when quoting this brochure.

\*data from September 2023



**butters**<sup>bjb</sup>  
**john bee**

LOT  
**14**



\*Guide price  
**£70,000**

Scan or Click  
for further  
information.



haart



**37 Lilian Close, Hellesdon, Norwich, Norfolk, NR6 6RZ**

- Flat
- One bedroom
- Currently tenanted
- Leasehold – 60 Years
- Council Tax – A
- EPC - B

**Legal Representative**

**Jake Mowatt**

**Leathes Prior**

**T 01603 610911**

**E [jmowatt@leathesprior.co.uk](mailto:jmowatt@leathesprior.co.uk)**

**To apply contact:**

**Norwich Haart**

**T 01603 320018**

**E [NorwichHRT@spicerhaart.co.uk](mailto:NorwichHRT@spicerhaart.co.uk)**

LOT  
**15**

\*Guide price  
**£200,000 plus**

Scan or Click  
for further  
information.



**42 Heatley Lane, Broomhall, Nantwich, Cheshire, CW5 8BA**

- Semi-detached house
- Three bedrooms
- In need of modernisation
- Gardens & driveway
- Freehold
- Council Tax – B
- EPC – TBC

**Legal Representative**

Claire Hilton  
Hall Smith Whittingham  
T 01270 610300  
E [chilton@hswsolicitors.co.uk](mailto:chilton@hswsolicitors.co.uk)

**To apply contact:**

Nantwich bjb  
T 01270 623444  
E [nantwich@bjbmail.com](mailto:nantwich@bjbmail.com)

LOT  
**16**

\*Guide price  
**£190,000 plus**

Scan or Click  
for further  
information.



## **Dale Cottage, Leadendale Lane, Rough Close, Stoke-on-Trent, Staffordshire, ST3 7NL**

- Detached house
- Three bedrooms
- In need of modernisation
- Spacious plot (approx. 2.5 acres)
- Freehold
- Council Tax – C
- EPC – TBC

### **Legal Representative**

Victoria Calladine

Woolliscrofts

**T** 01782 204000

**E** [vcalladine@woolliscrofts.co.uk](mailto:vcalladine@woolliscrofts.co.uk)

### **To apply contact:**

Hanley bjb

**T** 01782 202600

**E** [hanley@bjbmail.com](mailto:hanley@bjbmail.com)

LOT  
**17**

\*Guide price  
**£15,000 plus**

Scan or Click  
for further  
information.



## Former BT Exchange, Talke Road, Newcastle-Under-Lyme, Staffordshire, ST5 7AL

- Former Telephone Exchange building
- Existing premises: 27 Sq. m
- Potential for alternative uses STPP
- Freehold
- Council Tax Band - N/A
- EPC - N/A

### Legal Representative

Kian McCarthy  
Willsons Solicitors  
T 012476 387821  
E [KMCarthy@willsonslegal.co.uk](mailto:KMCarthy@willsonslegal.co.uk)

### To apply contact:

Land & New Homes bjb  
T 01782 211147  
E [residential-land@bjbmail.com](mailto:residential-land@bjbmail.com)

LOT  
**18**

\*Guide price  
**£89,000 plus**

Scan or Click  
for further  
information.



## **6 Brunswick Place, Hanley, Stoke-on-Trent, Staffordshire, ST1 3DD**

- Mid-terrace house
- Three bedrooms
- In need of modernisation
- Freehold
- Council Tax – A
- EPC – TBC

### **Legal Representative**

Kerry Dundas  
Dundas Law  
T 01782 528338  
E [kerry@dundaslaw.co.uk](mailto:kerry@dundaslaw.co.uk)

### **To apply contact:**

Hanley bjb  
T 01782 202600  
E [hanley@bjbmail.com](mailto:hanley@bjbmail.com)

We are **successfully** managing property in **Hanley, Crewe and Newcastle Under-Lyme** and surrounding areas

Let smart:  
think **bjb**

## LANDLORDS

Are you satisfied with your current managing agent?

- When was your **last** rent review?
- When was your most **recent** condition report?
- When did your agent last **update** you on legislation?
- Has your agent offered you **protection** for non-payment of rent?

Please contact our team for honest and up to date market advice.

**Hanley bjb**

**T: 01782 211120**

**E: hanley@bjbmail.com**

**butters john bee**<sup>bjb</sup>



LOT  
**19**

\*Guide price  
**£135,000 plus**

Scan or Click  
for further  
information.



## 1 Athol Avenue, Crewe, Cheshire, CW2 6JH

- Semi-detached house
- Two bedrooms
- Loft room
- In need of modernisation
- Freehold
- Council Tax – B
- EPC – C

### Legal Representative

Kerry Irvine  
Hall Smith & Whittingham  
T 01270 610300  
E [kirvine@hswsolicitors.co.uk](mailto:kirvine@hswsolicitors.co.uk)

### To apply contact:

Crewe bjb  
T 01270 213541  
E [crewe@bjbmail.com](mailto:crewe@bjbmail.com)

LOT  
**20**

\*Guide price  
**£200,000 plus**

Scan or Click  
for further  
information.



## Former Beardmore & Smith Limited, Meadow Street, Chesterton, Newcastle-under-Lyme, ST5 7HU

- Industrial Unit/Site
- Former fireplace showroom & offices
- Area 8,400 sq ft
- Warehouse unit
- Storage unit (not inspected)
- Rateable value - £36,500 p/a
- EPC - TBC

### Legal Representative

Heather Reynolds  
Bowcock Pursail  
T 01782 200000  
E [hr@bowcockpursail.co.uk](mailto:hr@bowcockpursail.co.uk)

### To apply contact:

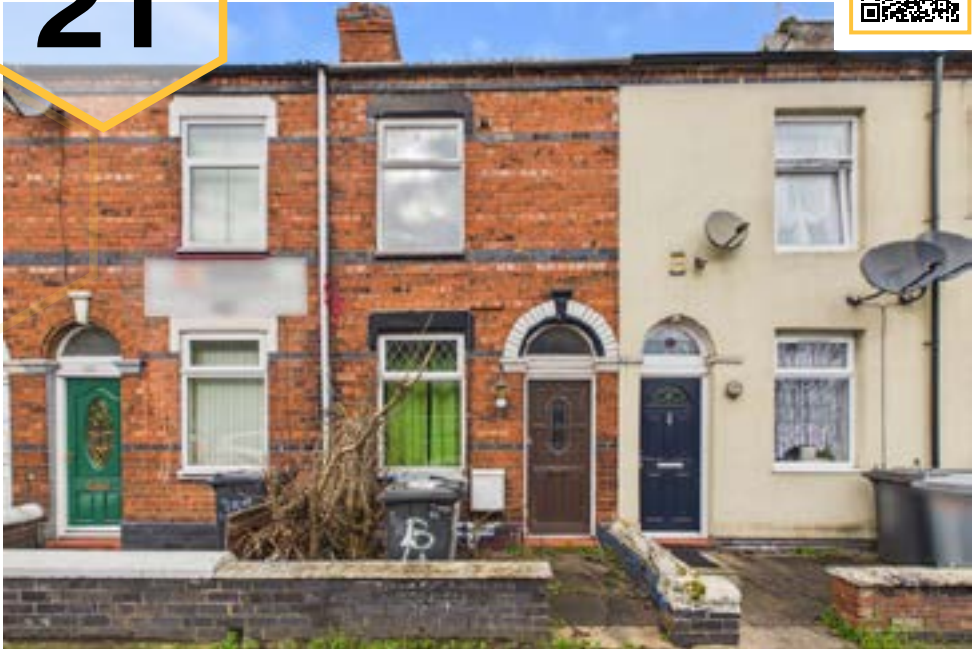
Commercial  
T 01782 212201  
E [commercial@bjbmail.com](mailto:commercial@bjbmail.com)



LOT  
**21**

\*Guide price  
**£75,000 plus**

Scan or Click  
for further  
information.



## 349 West Street, Crewe, Cheshire CW1 3HY

- Mid-terrace house
- Two bedrooms
- In need of modernisation
- Freehold
- Council Tax - A
- EPC - D

### Legal Representative

Legal representative:

Steven Park

T 01782 819611

E [stevenpark@wpsolicitors.co.uk](mailto:stevenpark@wpsolicitors.co.uk)

### To apply contact:

Crewe bjb

T 01270 213541

E [crewe@bjbmail.com](mailto:crewe@bjbmail.com)

LOT  
**22**

\*Guide price  
**£166,500 plus**

Scan or Click  
for further  
information.



## 39 Severn Drive, Seabridge, Newcastle-under-Lyme, Staffordshire, ST5 4BH

- Detached bungalow
- Two bedrooms
- In need of modernisation
- Freehold
- Council Tax - D
- EPC – TBC

### Legal Representative

Kerry Dundas

Dundas Law

T 01782 528338

E [kerry@dundaslaw.co.uk](mailto:kerry@dundaslaw.co.uk)

### To apply contact:

Newcastle bjb

T 01782 622155

E [newcastle@bjbmail.com](mailto:newcastle@bjbmail.com)

LOT  
**23**

\*Guide price  
**£155,000 plus**

Scan or Click  
for further  
information.



## Flat 64 Kingswood Park, Manley, Frodsham, Cheshire West, WA6 6EH

- Two bed apartment
- Grade II Listed building
- Stylish interior
- Leasehold
- Council Tax - D
- EPC - D

### Legal Representative

Lorna Ferguson

Lilac Law

T 0151 433 3233

E [lorna.ferguson@lilac-law.co.uk](mailto:lorna.ferguson@lilac-law.co.uk)

### To apply contact:

Northwich bjb

T 01606 352888

E [northwich@bjbmail.com](mailto:northwich@bjbmail.com)

LOT  
**24**



\*Guide price  
**£170,000**

Scan or Click  
for further  
information.



**HAYBROOK**



## 155 Olive Grove Road, Lowfield, Sheffield, S2 3GE

- End-terrace house
- Three bedrooms
- In need of modernisation
- Enclosed rear garden
- Leasehold – 78 years
- Council Tax – A
- EPC – D

**Legal Representative**  
**Scarlett Rushton**  
**Tedstone George & Tedstone**  
**T** 01785 564461  
**E** [Scarlett@tedstones.com](mailto:Scarlett@tedstones.com)

**To apply contact:**  
**Gleadless Haybrook**  
**T** 01143 491802  
**E** [GleadlessHAY@spicerhaart.co.uk](mailto:GleadlessHAY@spicerhaart.co.uk)



# Follow us on Facebook

**@buttersjohnbeeauctions**  
and stay ahead of  
the game.

Keep up to date with news  
and events, up and coming  
instructions, results and  
updates on past lots.

**butters** john bee<sup>bjb</sup>

**facebook**<sup>®</sup>

LOT  
**25**

\*Guide price  
**£83,250 plus**

Scan or Click  
for further  
information.



## 54 Queens Park Gardens, Crewe, Cheshire, CW2 7SW

- **Maisonette**
- **One bedroom**
- **In need of modernisation**
- **Freehold**
- **Council Tax – A**
- **EPC – E**

### **Legal Representative**

Hayley Sharpes  
Hall Smith Whittingham  
**T 01270 212000**  
**E [hsharpes@hswsolicitors.co.uk](mailto:hsharpes@hswsolicitors.co.uk)**

### **To apply contact:**

Crewe bjb  
**T 01270 213541**  
**E [crewe@bjbmail.com](mailto:crewe@bjbmail.com)**

LOT  
**26**

\*Guide price  
**£91,000 plus**

Scan or Click  
for further  
information.



## **83 Wilding Road, Ball Green, Stoke-on-Trent, Staffordshire, ST6 8BQ**

- Mid-terrace House
- Three bedrooms
- Part finished renovation project
- Freehold
- Council Tax – A
- EPC – D

### **Legal Representative**

Samantha Purcell  
Walters & Plaskitt  
T 01782 819611  
E [samantha@wpsolicitors.co.uk](mailto:samantha@wpsolicitors.co.uk)

### **To apply contact:**

Hanley bjb  
T 01782 202600  
E [hanley@bjbmail.com](mailto:hanley@bjbmail.com)

LOT  
**27**

\*Guide price  
**£180,000 plus**

Scan or Click  
for further  
information.



## Westward Ho, Peggys Bank, Wood Lane, Newcastle-under-Lyme, Staffordshire, ST7 8RH

- Detached house
- Three bedrooms
- In need of modernisation
- Views of surrounding countryside
- Freehold
- Council Tax - D
- EPC - D

### Legal Representative

Gita Calame  
RJS Solicitors  
T 01782 646320  
E [gita.calame@rjssolicitors.com](mailto:gita.calame@rjssolicitors.com)

### To apply contact:

Land & New Homes bjb  
T 01782 211147  
E [residential-land@bjbmail.com](mailto:residential-land@bjbmail.com)

LOT  
**28**

\*Guide price  
**£40,000 plus**

Scan or Click  
for further  
information.



## Land at Peggys Bank, Wood Lane, Newcastle-under-Lyme, Staffordshire, ST7 8RH

- A parcel of extended garden land
- Site Area: 0.20 Acre
- Views of the surrounding countryside
- Potential for alternative uses STPP
- Freehold
- EPC - N/A

### Legal Representative

Gita Calame

RJS Solicitors

T 01782 646320

E [gita.calame@rjssolicitors.com](mailto:gita.calame@rjssolicitors.com)

### To apply contact:

Land & New Homes bjb

T 01782 211147

E [residential-land@bjbmail.com](mailto:residential-land@bjbmail.com)

LOT  
**29**

\*Guide price  
**£20,000 plus**

Scan or Click  
for further  
information.



## Woodland at Peggys Bank, Wood Lane, Newcastle-under-Lyme, Staffordshire, ST7 8RH

- Parcel of Woodland
- Site Area: 0.20 Acre
- Potential for alternative uses STPP
- Views of the surrounding countryside
- Freehold
- EPC - N/A

### Legal Representative

Gita Calame  
RJS Solicitors  
T 01782 646320  
E [gita.calame@rjssolicitors.com](mailto:gita.calame@rjssolicitors.com)

### To apply contact:

Land & New Homes bjb  
T 01782 211147  
E [residential-land@bjbmail.com](mailto:residential-land@bjbmail.com)

# Unlock the potential of your developments with **butters john bee** <sup>bjb</sup> land & new homes

Looking for a **new homes specialist** to deliver exceptional results? At **butters john bee New Homes**, we combine expertise with innovative strategies to make **your properties** stand out.

## Why Choose **Us**?

- ✓ **Specialist Expertise:** Proven success in developments of all sizes.
- ✓ **Tailored Marketing:** Bespoke campaigns with high-impact visuals and virtual tours.
- ✓ **Dedicated Support:** Guidance from site acquisition to final sale.
- ✓ **Market Knowledge:** Accurate pricing and targeted buyer outreach.

## Your Vision, **Our Drive**

We don't just sell homes – we bring your developments to life.  
Let's build success together.



**Paul Martin**

**Regional New Homes Sales Manager**

07587 038921

[paulmartin@bjbmail.com](mailto:paulmartin@bjbmail.com)

LOT  
**30**

\*Guide price  
**£270,000 plus**

Scan or Click  
for further  
information.



## Craig Y Don, Marsh Lane, Nantwich, Cheshire, CW5 8PA

- Detached dormer bungalow
- Two bedrooms
- In need of modernisation
- Extensive living space
- Freehold
- Council Tax – D
- EPC - E

### Legal Representative

Kerry Dundas  
Dundas Law  
T 01782 528338  
E [kerry@dundaslaw.co.uk](mailto:kerry@dundaslaw.co.uk)

### To apply contact:

Nantwich bjb  
T 01270 623444  
E [nantwich@bjbmail.com](mailto:nantwich@bjbmail.com)

LOT  
**31**

\*Guide price  
**£260,000 plus**

Scan or Click  
for further  
information.



## 27, 29, 31 Sandon Road, Stafford, Staffordshire, ST16 3ES

- Row of 3 terrace properties
- Two x 3 bed residential houses (1 vacant)
- One hot food takeaway with flat above
- In need of modernisation
- Freehold
- Council Tax –A
- EPC – TBC

### Legal Representative

Charlotte Walster  
Pickering & Butters  
T 01889 803080  
E [Charlotte.Walster@pb4law.com](mailto:Charlotte.Walster@pb4law.com)

### To apply contact:

Stafford bjb  
T 01785 246000  
E [stafford@bjbmail.com](mailto:stafford@bjbmail.com)

LOT  
32



\*Guide price  
**£130,000**

Scan or Click  
for further  
information.



## Flat 49 The Ice House, Belward Street, Nottingham, NG1 1JW

- Eighth floor flat
- Two bedrooms
- Currently tenanted (due to vacate)
- Leasehold – 104 years
- Council Tax - E
- EPC – C

### Legal Representative

**Yasmin Uddin**

**TLT Solicitors**

**T 0333 006 1621**

**E [Yasmin.Uddin@TLTsolicitors.com](mailto:Yasmin.Uddin@TLTsolicitors.com)**

### To apply contact:

**Nottingham haart**

**T 0115 850 1433**

**E [nottinghamHRT@spicerhaart.co.uk](mailto:nottinghamHRT@spicerhaart.co.uk)**

LOT  
**33**



\*Guide price  
**£110,000**

Scan or Click  
for further  
information.



## Flat 78 The Attrium, Waterfront Plaza, Nottingham, NG2 3BT

- Fifth floor flat
- One bedroom
- Well-presented interior
- Leasehold – 979 years
- Council Tax - B
- EPC – B

### Legal Representative

**Sanche Tutter**

**Nelsons**

**T 0115 958 6262**

**E [Sanche.Tutter@nelsonslaw.co.uk](mailto:Sanche.Tutter@nelsonslaw.co.uk)**

### To apply contact:

**Nottingham haart**

**T 0115 850 1433**

**E [nottinghamHRT@spicerhaart.co.uk](mailto:nottinghamHRT@spicerhaart.co.uk)**



# Exclusive opportunities for investments of new build properties

## Benefits of joining include:



Alerts for properties that match your investment criteria.



Early access to new build developments.



Monthly newsletters with analysis and insight of the UK investment market.



Email for more information or sign up via the QR code  
[landandnewhomes@spicerhaart.co.uk](mailto:landandnewhomes@spicerhaart.co.uk)



LOT  
**34**

\*Guide price  
**£200,000 plus**

Scan or Click  
for further  
information.



## Former Pentecostal Church, The Avenue, Kidsgrove, Stoke-On-Trent, Staffordshire, ST7 1AL

- Former Church premises
- PP conversion to 12 supported housing flats
- Planning Ref: 22/00883/FUL
- Expired PP conversion - detached house
- Planning Ref: 21/00803/FUL
- Potential for alternative uses STPP
- Freehold
- EPC – N/A

### Legal Representative

Salmons Solicitors

Janet Farrell

T 01782 639827

E [janet.farrell@salmonssolicitors.net](mailto:janet.farrell@salmonssolicitors.net)

### To apply contact:

Land & New Homes BJB

T 01782 211147

E [residential-land@bjbmail.com](mailto:residential-land@bjbmail.com)



Ground Floor Plan  
Scale 1:100



First Floor Plan  
Scale 1:100



0 5 10 15 20 25 30 35 40 45 50 55 60 65 70 75 80 85 90 95 100



Proposed Ground Floor Plan 1:100 @ 40



LOT  
**35**

\*Guide price  
**£150,000 plus**

Scan or Click  
for further  
information.



## Unit 4 Parkhall Works , Sutherland Road, Stoke-on-Trent, Staffordshire ST3 1HJ

- Three storey industrial premises
- Main road location
- Two parking spaces
- In need of modernisation / refurbishment
- 10,000 Square Feet (929m<sup>2</sup>) Approx
- Freehold
- EPC - TBC

### Legal Representative

Peter Haycock  
AH Brooks & Co  
T 01538 383201  
E [PeterHaycock@ahbrooks.co.uk](mailto:PeterHaycock@ahbrooks.co.uk)

### To apply contact:

Commercial bjb  
T 01782 212201  
E [commercial@bjbmail.com](mailto:commercial@bjbmail.com)

LOT  
**36**

\*Guide price  
**£140,000 plus**

Scan or Click  
for further  
information.



**105 Field Lane, Wistaston, Crewe, Cheshire, CW2 8ST**

- Mid-townhouse
- Two bedrooms
- Well-presented interior
- Freehold
- Council Tax – B
- EPC – C

**Legal Representative**

Jonathan Manning  
Hibberts  
T 01270 215117  
E [jhm@hibberts.com](mailto:jhm@hibberts.com)

**To apply contact:**

Crewe bjb  
T 01270 213541  
E [crewe@bjbmail.com](mailto:crewe@bjbmail.com)

LOT  
**37**

\*Guide price  
**£20,000 plus**

Scan or Click  
for further  
information.



## Land near Marston Road, Stafford, Staffordshire, ST16 3BX

- Vacant Land
- Site Area: 0.04 Acre (156 sq. m)
- Potential for alternative uses STPP
- Located within Stafford Borough Council
- Freehold
- EPC - N/A

### Legal Representative

Manjinder Singh  
ASR Advantage Solicitors  
T 0121661 7700  
E [manny@asrsolicitors.co.uk](mailto:manny@asrsolicitors.co.uk)

### To apply contact:

Land & New Homes bjb  
T 01782 211147  
E [residential-land@bjbmail.com](mailto:residential-land@bjbmail.com)

LOT  
**38**

\*Guide price  
**£140,000 plus**

Scan or Click  
for further  
information.



## 49 Delamere Street, Winsford, Cheshire, CW7 2LX

- Double fronted cottage
- Two bedrooms
- In need of modernisation
- Freehold
- Council Tax – D
- EPC – TBC

### Legal Representative

Kerry Dundas  
Dundas Law  
T 01782 528338  
E [kerry@dundaslaw.co.uk](mailto:kerry@dundaslaw.co.uk)

### To apply contact:

Winsford bjb  
T 01782 202600  
E [hanley@bjbmail.com](mailto:hanley@bjbmail.com)



# Exclusive opportunities for investments of new build properties

## Benefits of joining include:



Alerts for properties that match your investment criteria.



Early access to new build developments.



Monthly newsletters with analysis and insight of the UK investment market.



Email for more information or sign up via the QR code  
[landandnewhomes@spicerhaart.co.uk](mailto:landandnewhomes@spicerhaart.co.uk)

**haart** LAND & NEW HOMES   **HOWARDS** LAND & NEW HOMES   **butters john bee**<sup>bjb</sup> land & new homes

**CHEWTON ROSE** LAND & NEW HOMES   **DARLOWS** LAND & NEW HOMES   *Felicity J. Lord* LAND & NEW HOMES   **HAYBROOK** LAND & NEW HOMES



LOT  
39



\*Guide price  
**£100,000**

Scan or Click  
for further  
information.



haart



## 20 Boylestone Road, Littleover, Derby, DE23 2PL

- Mid-townhouse
- Three bedrooms
- In need of modernisation
- Generous rear garden
- Freehold
- Council Tax – A
- EPC - B

### Legal Representative

Lauren Briddon

Flint Bishop

T 01332 226 197

E [lauren.bridon@flintbishop.co.uk](mailto:lauren.bridon@flintbishop.co.uk)

### To apply contact:

Derby haart

T 01332 361621

E [DerbyHRT@spicerhaart.co.uk](mailto:DerbyHRT@spicerhaart.co.uk)

LOT  
**40**

\*Guide price  
**£140,000 plus**

Scan or Click  
for further  
information.



## Land at Peel Terrace, Stafford, Staffordshire, ST16 3BX

- Residential development site
- Site Area: 0.13 Acre (508 sq.m)
- Full planning for 5 apartments in 2021
- Ref: 20/33286/FUL
- Located within Stafford Borough Council
- Freehold
- EPC - N/A

### Legal Representative

Legal Representative

Manjinder Singh

T 0121661 7700

E [manny@asrsolicitors.co.uk](mailto:manny@asrsolicitors.co.uk)

### To apply contact:

Land & New Homes bjb

T 01782 211147

E [residential-land@bjbmail.com](mailto:residential-land@bjbmail.com)



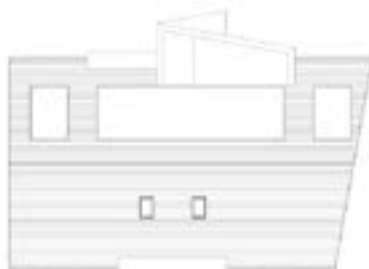
Ground Floor Plan As Proposed - scale 1:100



First Floor Plan As Proposed - scale 1:100



Second (Loft) Floor Plan As Proposed - scale 1:100



Roof Plan As Proposed - scale 1:100

LOT  
**41**

\*Guide price  
**£94,500 plus**

Scan or Click  
for further  
information.



## 75 Elgin Street, Shelton, Stoke-on-Trent, Staffordshire, ST4 2RD

- Mid-terrace house
- Two bedrooms
- Currently tenanted @ £8,520 p/a
- Freehold
- Council Tax – A
- EPC – E

### Legal Representative

Tracy Wilcocks  
Goddard Dunbar  
T 01782 284320  
E [tracy@goddarddunbar.co.uk](mailto:tracy@goddarddunbar.co.uk)

### To apply contact:

Hanley bjb  
T 01782 202600  
E [hanley@bjbmail.com](mailto:hanley@bjbmail.com)

LOT  
**42**

\*Guide price  
**£85,500 plus**

Scan or Click  
for further  
information.



## 16 & 16a Walthall Street, Crewe, Cheshire, CW2 7JZ

- Corner terrace property
- Two x one bed flats
- In need of modernisation
- Freehold
- Council Tax – A
- EPC – D/E

### Legal Representative

Tara Crisp

Hibberts Solicitors

T 01270 215117

E [Tara.crisp@hibberts.com](mailto:Tara.crisp@hibberts.com)

### To apply contact:

Crewe bjb

T 01270 213541

E [crewe@bjbmail.com](mailto:crewe@bjbmail.com)

LOT  
**43**



\*Guide price  
**£88,000**

Scan or Click  
for further  
information.



**DARLows**



## 17 Victoria Street, Abertillery, Blaenau Gwent, S. Wales, NP13 1PG

- End-terrace house
- Three bedrooms
- In need of modernisation
- Freehold
- Council Tax – B
- EPC – E

### Legal Representative

**Paul Richards**

**Rubin Lewis O'Brien**

**T 01633 867000**

**E Paul.Richards@rlo.law**

### To apply contact:

**Brynmawr Darlows**

**T 01495 310755**

**E BrynmawrDAR@spicerhaart.co.uk**

LOT  
**44**

\*Guide price  
**£105,000 plus**

Scan or Click  
for further  
information.



## **11 Cotesheath Street, Hanley, Stoke-on-Trent, Staffordshire, ST1 3JB**

- Mid-terrace house
- Three bedrooms
- Currently tenanted @ £9,300 p/a
- Freehold
- Council Tax – A
- EPC – D

### **Legal Representative**

Kerry Dundas  
Dundas Law  
**T** 01782 528338  
**E** [kerry@dundaslaw.co.uk](mailto:kerry@dundaslaw.co.uk)

### **To apply contact:**

Hanley bjb  
**T** 01782 202600  
**E** [hanley@bjbmail.com](mailto:hanley@bjbmail.com)

# Due to unprecedented demand from buyers we need **more land** to sell:

## Land Wanted

- With or without Planning Consent
- Single plots up to 50 + units
- Brownfield or Greenfield
- Buildings For Conversion
- Listed Buildings / Contaminated Land
- Private Treaty or Auction Sale
- Sales Subject to Planning
- Option Agreements

If you have land to sell please get in touch for a no obligation discussion.

### Land & Development Team

E: [residential-land@bjbmail.com](mailto:residential-land@bjbmail.com)

T: 01782 211147



**Paul G, Beardmore**  
BSc MRICS

Director - Residential Land  
[paulbeardmore@bjbmail.com](mailto:paulbeardmore@bjbmail.com)  
07808 215045



**Alex Djukic**  
MSc BSc

Regional Land Manager  
[alexdjukic@bjbmail.com](mailto:alexdjukic@bjbmail.com)  
07587 038787

LOT  
**45**

\*Guide price  
**£117,000 plus**

Scan or Click  
for further  
information.



## 300 Walthall Street, Crewe, Cheshire, CW2 7LE

- Mid- terrace house
- Fore-court & bay fronted
- Three bedrooms
- In need of modernisation
- Freehold
- Council Tax – A
- EPC – D

### Legal Representative

Victoria Calladine  
Woolliscrofts  
T 01782 204000  
E [vcalladine@woolliscrofts.co.uk](mailto:vcalladine@woolliscrofts.co.uk)

### To apply contact:

Crewe bjb  
T 01270 213541  
E [crewe@bjbmail.com](mailto:crewe@bjbmail.com)

LOT  
**46**

\*Guide price  
**£114,000 plus**

Scan or Click  
for further  
information.



It is our understanding that there is a mine shaft within 20 metres of the boundary of the property and we therefore suggest that interested parties make enquiries of mortgage lenders as to whether the property is considered suitable for mortgage purposes.

## **499 High Street, Tunstall, Stoke-on-Trent, Staffordshire, ST6 5PB**

- Semi-detached house
- Three bedrooms
- In need of modernisation
- Freehold
- Council Tax – B
- EPC – D

### **Legal Representative**

Samantha Purcell

Walters & Plaskitt

**T 01782 819611**

**E [Samantha@wpsolicitors.co.uk](mailto:Samantha@wpsolicitors.co.uk)**

### **To apply contact:**

Hanley bjb

**T 01782 202600**

**E [hanley@bjbmail.com](mailto:hanley@bjbmail.com)**

LOT  
**47**

\*Guide price  
**£145,000 plus**

Scan or Click  
for further  
information.



## 18 Shropshire Street, Market Drayton, Shropshire, TF9 3BY

- Two storey mixed use part let Investment
- Ground floor retail unit vacant
- Two 1 bedroom flats currently let
- Current Income from flats £13,740 p/a
- Potential total income £20,940 p/a
- Rateable Value - £7,500 p/a
- EPC - C/C/D

### Legal Representative

Andrew Williamson

Bowcock Cuerden

T 01270 611106

E [awilliamson@bowcockcuerden.co.uk](mailto:awilliamson@bowcockcuerden.co.uk)

### To apply contact:

Commercial bjb

T 01782 212201

E [commercial@bjbmail.com](mailto:commercial@bjbmail.com)

We are **successfully** managing property in **Hanley, Crewe and Newcastle Under-Lyme** and surrounding areas

Let smart:  
think **bjb**

## LANDLORDS

Are you satisfied with your current managing agent?

- When was your **last** rent review?
- When was your most **recent** condition report?
- When did your agent last **update** you on legislation?
- Has your agent offered you **protection** for non-payment of rent?

Please contact our team for honest and up to date market advice.

**Hanley bjb**

**T: 01782 211120**

**E: hanley@bjbmail.com**

**butters john bee**<sup>bjb</sup>



LOT  
**48**

\*Guide price  
**£175,500 plus**

Scan or Click  
for further  
information.



## 70 West Avenue, Rudeheath, Northwich, Cheshire, CW9 7ES

- Detached house
- Three bedrooms
- In need of modernisation
- Freehold
- Council Tax - C
- EPC - E

### Legal Representative

Tracy Wilcocks  
Goddard Dunbar  
T 01782 28432  
E [tracy@goddarddunbar.co.uk](mailto:tracy@goddarddunbar.co.uk)

### To apply contact:

Northwich bjb  
T 01606 352888  
E [northwich@bjbmail.com](mailto:northwich@bjbmail.com)



## Commercial Auctions

# Have you considered Public Auction as a means to sell your Commercial Property?

## 87.5% Sold\*

Our auction is suitable for all commercial property including investments, shops, industrial & offices

- Attracts cash rich purchasers
- Completion within 20 working days
- The only way to find 'best value'
- Catalogues sent to 8,500 people

Interested in finding out more?

Call **01782 212201**

or email [commercial@bjbmail.com](mailto:commercial@bjbmail.com)

and receive £150 discount when quoting this brochure.

\*data from September 2023



**butters**<sup>bjb</sup>  
**john bee**

LOT  
**49**

\*Guide price  
**£190,000 plus**

Scan or Click  
for further  
information.



## **14 Westfields, Caudon Low, Stoke-on-Trent, Staffordshire Moorlands, ST10 3ED**

- Semi-detached house
- Three bedrooms
- In need of modernisation
- Large rear garden
- Freehold
- Council Tax – B
- EPC – E

### **Legal Representative**

James Whitmore  
Litchfield Reynolds  
**T** 01782 313212  
**E** james@lrsolicitors.co.uk

### **To apply contact:**

Longton bjb  
**T** 01782 594777  
**E** longton@bjbmail.com

LOT  
**50**

\*Guide price  
**£60,000 plus**

Scan or Click  
for further  
information.



## 58 Haybridge Road, Hadley, Telford, Shropshire, TF1 6LR

- Derelict detached property
- Potential for alternative uses STPP
- Site Area: 0.26 Acre (1034 sq.m)
- Freehold
- Council Tax – B
- EPC – N/A

### Legal Representative

Sajid Khan

Martin Kaye

T 01952 525987

E [SajidKhan@martinkaye.co.uk](mailto:SajidKhan@martinkaye.co.uk)

### To apply contact:

Land & New Homes bjb

T 01782 211147

E [residential-land@bjbmail.com](mailto:residential-land@bjbmail.com)

LOT  
**51**

\*Guide price  
**£135,000 plus**

Scan or Click  
for further  
information.



## **31 St Andrews Court, Atholl Avenue, Crewe, Cheshire, CW2 6LF**

- Semi-detached house
- Three bedrooms
- Currently tenanted @ £9,000 p/a
- Freehold
- Council Tax – B
- EPC – D

### **Legal Representative**

Jonathan Manning  
Hibberts  
T 01270 215117  
E [jhm@hibberts.com](mailto:jhm@hibberts.com)

### **To apply contact:**

Crewe bjb  
T 01270 213541  
E [crewe@bjbmail.com](mailto:crewe@bjbmail.com)

# Just mortgage and protection advice

## Won at Auction? Don't Let Finance Hold You Back.

Fast, reliable auction finance designed to meet tight completion deadlines. Access funds quickly, move with confidence, and secure your purchase without the stress.

## 28 Days. No Delays.

Auction purchases move fast – so should your finance. Our specialist auction funding solutions are built for speed, certainty, and smooth completion.

## See It. Bid on It. Fund It.

Specialist auction finance tailored for investors who need flexibility and speed. Whether refurb, flip, or hold – we'll help you make it happen.

We offer a range of no obligation advice. Book your appointment now.

**YOUR PROPERTY MAY BE REPOSSESSED IF YOU DO NOT KEEP UP REPAYMENTS ON YOUR MORTGAGE.**

[www.justmortgages.co.uk](http://www.justmortgages.co.uk)

Just Mortgages is a trading name of Just Mortgages Direct Limited which is an appointed representative of The Openwork Partnership, a trading style of Openwork Limited which is authorised and regulated by the Financial Conduct Authority. Approved by The Openwork Partnership on 24/02/2026.

**Just  
Mortgages**

LOT  
**52**

\*Guide price  
**£118,000 plus**

Scan or Click  
for further  
information.



## 23 Sherratt Street, Bradley, Stoke-on-Trent, Staffordshire, ST6 7NT

- Detached house
- Three bedrooms
- In need of modernisation
- Freehold
- Council Tax – C
- EPC – E

### Legal Representative

Kerry Dundas

Dundas Law

T 01782 528338

E [kerry@dundaslaw.co.uk](mailto:kerry@dundaslaw.co.uk)

### To apply contact:

Hanley bjb

T 01782 202600

E [hanley@bjbmail.com](mailto:hanley@bjbmail.com)

LOT  
**53**

\*Guide price  
**£55,000 plus**

Scan or Click  
for further  
information.



## Apartment 23 Alexandra House, 47 Rutland Street, Leicester, LE1 1SE

- Third floor flat
- Three bedrooms
- In need of modernisation
- Located close to the City Centre
- Leasehold – 103 years
- Council Tax – C
- EPC - D

### Legal Representative

Cameron Ward

TLT LLP

T 0333 006 0000

E [auctions@tlt.com](mailto:auctions@tlt.com)

### To apply contact:

Auction bjb

T 01782 211180

E [auction@bjbmail.com](mailto:auction@bjbmail.com)

LOT  
**54**

\*Guide price  
**£135,000 plus**

Scan or Click  
for further  
information.



**264 Middlewich Street, Crewe, Cheshire, CW1 4DP**

- Semi-detached house
- Three Bedrooms
- In need of modernisation
- Freehold
- Council Tax – B
- EPC – D

**Legal Representative**

Zoe Olender  
Dixon Rigby Keogh  
T 01270 766550  
E [Zoe.Olender@drk-law.co.uk](mailto:Zoe.Olender@drk-law.co.uk)

**To apply contact:**

Crewe bjb  
T 01270 213541  
E [crewe@bjbmail.com](mailto:crewe@bjbmail.com)

LOT  
**55**

\*Guide price  
**£73,000 plus**

Scan or Click  
for further  
information.



It is suggested that potential purchaser's make their own enquiries of mortgage lenders as to whether the property is mortgageable prior to making a bid at auction.

## **164 Hanley Road, Hanley, Stoke-on-Trent, Staffordshire, ST1 6BL**

- Mid-terrace house
- Three bedrooms
- In need of modernisation
- Freehold
- Council Tax – A
- EPC – E

### **Legal Representative**

Kerry Dundas  
Dundas Law  
**T 01782 528338**  
**E [kerry@dundaslaw.co.uk](mailto:kerry@dundaslaw.co.uk)**

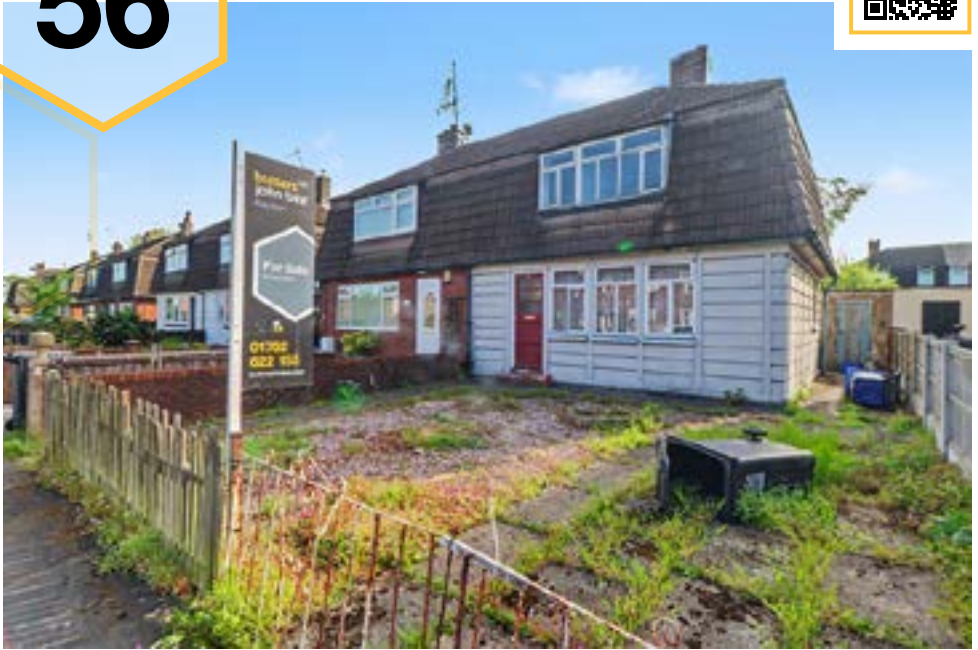
### **To apply contact:**

Hanley bjb  
**T 01782 202600**  
**E [hanley@bjbmail.com](mailto:hanley@bjbmail.com)**

LOT  
**56**

\*Guide price  
**£85,000 plus**

Scan or Click  
for further  
information.



It is our understanding that this property is considered to be of a non-traditional construction and we therefore suggest that interested parties make enquiries of mortgage lenders as to whether the property is considered suitable for mortgage purposes

## 16 John Offley Road, Madeley, Newcastle-under-Lyme, Staffordshire, CW3 9ND

- Semi-detached house
- Three bedrooms
- In need of modernisation
- Freehold
- Council Tax - A
- EPC – TBC

### Legal Representative

Mark Sadler  
Kenneth Elliott & Rowe  
T 01708 757575  
E mbs@ker.co.uk

### To apply contact:

Newcastle bjb  
T 01782 622155  
E newcastle@bjbmail.com

LOT  
**57**

\*Guide price  
**£119,000 plus**

Scan or Click  
for further  
information.



## 27 Ian Road, Newchapel, Newcastle-under-Lyme, Staffordshire, ST7 4PP

- Semi-detached house
- Three bedrooms
- In need of modernisation
- Freehold
- Council Tax – B
- EPC – D

### Legal Representative

Sharon Plane  
Goddard Dunbar  
T 01782 284320  
E [sharon@goddarddunbar.co.uk](mailto:sharon@goddarddunbar.co.uk)

### To apply contact:

Kidsgrove bjb  
T 01782 784442  
E [kidsgrove@bjbmail.com](mailto:kidsgrove@bjbmail.com)

LOT  
**58**

\*Guide price  
**£108,000 plus**

Scan or Click  
for further  
information.



## 23 Hungerford Road, Crewe, Cheshire, CW1 5EQ

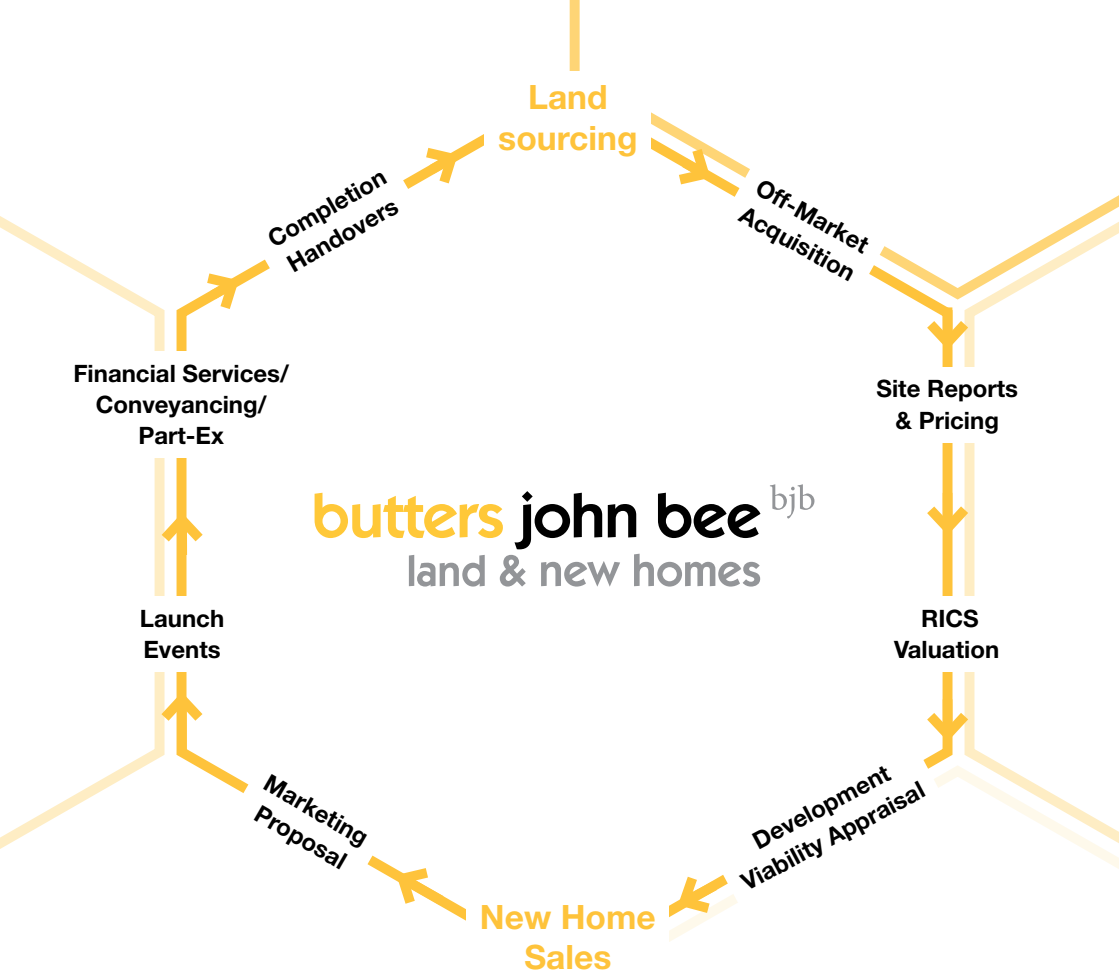
- Mid-terraced house
- Three bedrooms
- Currently tenanted @ £TBC
- Freehold
- Council Tax – B
- EPC – D

### Legal Representative

Tracy Wilcocks  
Goddard Dunbar  
T 01782 284320  
E [tracy@goddarddunbar.co.uk](mailto:tracy@goddarddunbar.co.uk)

### To apply contact:

Crewe bjb  
T 01270 213541  
E [crewe@bjbmail.com](mailto:crewe@bjbmail.com)



**For a no obligation discussion please contact:**

**Paul G. Beardmore BSc MRICS**

Director Residential Land

T 01782 211147

M 07809 215045

E paulbeardmore@bjbmail.com

**Alex Djukic BSc MSc**

Regional Land Manager

T 01782 211147

M 07587 038787

E alexdjukic@bjbmail.com

**Paul Martin**

Regional Sales Manager

New Homes

T 01782 405730

M 07587 038921

E paulmartin@bjbmail.com

**Joe Boulton BSc**

Assistant Land Manager

T 01782 211147

M 07741 152180

E joeboulton@bjbmail.com

LOT  
**59**

\*Guide price  
**£90,000 plus**

Scan or Click  
for further  
information.



## 29 Kelvin Avenue, Sneyd Green, Stoke-on-Trent, Staffordshire, ST1 6BP

- Semi-detached house
- Two bedrooms
- In need of renovation & repair
- Freehold
- Council Tax – B
- EPC – E

### Legal Representative

Michelle Hansell  
Talbots Law  
T 0800 118 1500  
E [MichelleHansell@talbotslaw.co.uk](mailto:MichelleHansell@talbotslaw.co.uk)

### To apply contact:

Hanley bjb  
T 01782 202600  
E [rhanley@bjbmail.com](mailto:rhanley@bjbmail.com)

We are **successfully**  
managing property  
in **Hanley, Crewe and**  
**Newcastle Under-Lyme**  
and surrounding areas

Let smart:  
think **bjb**

## LANDLORDS

Are you satisfied with your  
current managing agent?

- When was your **last** rent review?
- When was your most **recent** condition report?
- When did your agent last **update** you on legislation?
- Has your agent offered you **protection** for non-payment of rent?

Please contact our team for honest  
and up to date market advice.

**Hanley bjb**

**T: 01782 211120**

**E: hanley@bjbmail.com**

**butters john bee**<sup>bjb</sup>



LOT  
**60**

\*Guide price  
**£72,000 plus**

Scan or Click  
for further  
information.



## **39 Woodgate Street, Meir, Stoke-on-Trent, Staffordshire, ST3 6BS**

- Mid-terrace house
- Two bedrooms
- Recently renovated
- Freehold
- Council Tax – A
- EPC – C

### **Legal Representative**

Steven Vasey  
Walters & Plaskitt  
T 01782 819611  
E [s.vasey@waltersandplaskitt.com](mailto:s.vasey@waltersandplaskitt.com)

### **To apply contact:**

Longton bjb  
T 01782 594777  
E [longton@bjbmail.com](mailto:longton@bjbmail.com)

LOT  
**61**

\*Guide price  
**£77,000 plus**

Scan or Click  
for further  
information.



## 22 East Lawns, Betley, Staffordshire, CW3 9AG

- First floor flat
- Two bedrooms
- In need of modernisation
- Leasehold
- Council Tax – A
- EPC – TBC

**Legal Representative**  
Dominic Thompson  
Thompson & Co  
**T** 01772 3297 331  
**E** dominic@dtlaw.co.uk

**To apply contact:**  
Crewe bjb  
**T** 01270 213541  
**E** crewe@bjbmail.com

LOT  
**62**

\*Guide price  
**£95,000 plus**



## 108 Lord Street, Crewe, Cheshire, CW2 7DL

- Mid-terrace house
- Fore-court & bay fronted
- Three bedrooms
- Freehold
- Council Tax – A
- EPC – D

### Legal Representative

Jonathan Manning

Hibberts

T 01270 215117

E [jhm@hibberts.com](mailto:jhm@hibberts.com)

### To apply contact:

Crewe bjb

T 01270 213541

E [crewe@bjbmail.com](mailto:crewe@bjbmail.com)

# Notes

# Common Auction Conditions

7th Edition. Reproduced with the consent of  RICS

The general conditions (including any extra general conditions) apply to the contract except to the extent that they are varied by special conditions or by an addendum.

## Glossary

This glossary applies to the **auction conduct conditions** and the **sale conditions**.

Wherever it makes sense:

- singular words can be read as plurals, and plurals as singular words;
- a "person" includes a corporate body;
- words of one gender include the other genders;
- references to legislation are to that legislation as it may have been modified or re-enacted by the date of the **auction** or the **contract date** (as applicable); and
- where the following words printed in bold black type appear in bold blue type they have the specified meanings.

**Actual completion date** The date when **completion** takes place or is treated as taking place for the purposes of apportionment and calculating interest.

**Addendum** An amendment or addition to the **conditions** or to the **particulars** or to both whether contained in a supplement to the **catalogue**, a written notice from the auctioneers or an oral announcement at the **auction**.

**Agreed completion date** Subject to **condition** G9.3:

- (a) the date specified in the **special conditions**; or
- (b) if no date is specified, 20 **business days** after the **contract date**; but if that date is not a **business day** the first subsequent **business day**.

**Approved financial institution** Any Bank or Building Society that is regulated by a competent UK regulatory authority or is otherwise acceptable to the **auctioneers**.

**Arrears** Arrears of rent and other sums due under the **tenancies** and still outstanding on the **actual completion date**.

**Arrears schedule** The arrears schedule (if any) forming part of the **special conditions**.

**Auction** The auction advertised in the **catalogue**.

**Auction conduct conditions** The conditions so headed, including any extra auction conduct conditions.

**Auctioneers** The auctioneers at the **auction**.

**Business day** Any day except (a) a Saturday or a Sunday; (b) a bank holiday in England and Wales; or (c) Good Friday or Christmas Day.

**Buyer** The person who agrees to buy the **lot** or, if applicable, that person's personal representatives: if two or more are jointly the **buyer** their obligations can be enforced against them jointly or against each of them separately.

**Catalogue** The catalogue for the **auction** as it exists at the date of the **auction** (or, if the catalogue is the different, the date of the **contract**) including any **addendum** and whether printed or made available electronically.

**Completion** unless the **seller** and the **buyer** otherwise agree, the occasion when they have both complied with the obligations under the **contract** that they are obliged to comply with prior to **completion**, and the amount payable on **completion** has been unconditionally received in the **seller's** conveyancer's client account (or as otherwise required by the terms of the **contract**)

**Condition** One of the **auction conduct conditions** or **sales conditions**.

**Contract** The contract by which the **seller** agrees to sell and the **buyer** agrees to buy the **lot**.

**Contract date** The date of the **auction** or, if the **lot** is not sold at the **auction**:

- (a) the date of the **sale memorandum** signed by both the **seller** and **buyer**; or
- (b) if contracts are exchanged, the date of exchange. If exchange is not effected in person or by an irrevocable agreement to exchange made by telephone, fax or electronic mail the date of exchange is the date on which both parts have been signed and posted or otherwise placed beyond normal retrieval.

**Documents** Documents of title (including, if title is registered, the entries on the register and the title plan) and other documents listed or referred to in the **special conditions** relating to the lot.

**Extra general conditions** Any **conditions** added or varied by the **auctioneers** starting at condition G30

**Financial charge** A charge to secure a loan or other financial indebtedness (not including a rentcharge).

**General conditions** That part of the **sale conditions** so headed, including any extra general conditions.

**Interest rate** If not specified in the **special conditions**, the higher of 6% and 4% above the base rate from time to time of Barclays bank plc. The **interest rate** will also apply to any judgment debt, unless the statutory rate is higher.

**Lot** Each separate property described in the **catalogue** or (as the case may be) the property that the **seller** has agreed to sell and the **buyer** to buy (including **chattels**, if any).

**Old arrears** **Arrears** due under any of the **tenancies** that are not "new tenancies" as defined by the Landlord and Tenant (Covenants) Act 1995.

**Particulars** The section of the **catalogue** that contains descriptions of each lot (as varied by any **addendum**).

**Practitioner** An insolvency practitioner for the purposes of the Insolvency Act 1986 (or, in relation to jurisdictions outside the United Kingdom, any similar official).

**Price** The price that the **buyer** agrees to pay for the **lot**.

**Ready to complete** Ready, willing and able to complete: if **completion** would enable the **seller** to discharge all **financial charges** secured on the **lot** that have to be discharged by **completion**, then those outstanding financial charges do not prevent the **seller** from being **ready to complete**.

**Sale conditions** The **general conditions** as varied by any **special conditions** or **addendum**.

**Sale memorandum** The form so headed (whether or not set out in the **catalogue**) in which the terms of the **contract** for the sale of the **lot** are recorded.

**Seller** The person selling the **lot**. If two or more are jointly the **seller** their obligations can be enforced against them jointly or against each of them separately.

**Special conditions** Those of the **sale conditions** so headed that relate to the **lot**.

**Tenancies** Tenancies, leases, licences to occupy and agreements for lease and any documents varying or supplemental to them.

**Tenancy schedule** The tenancy schedule (if any) forming part of the **special conditions**.

**Transfer** Transfer includes a conveyance or assignment (and "to transfer" includes "to convey" or "to assign").

**TUPE** The Transfer of Undertakings (Protection of Employment) Regulations 2006.

**VAT** Value Added Tax or other tax of a similar nature.

**VAT option** An option to tax.

**We (and us and our)** The **auctioneers**.

**You (and your)** Someone who has a copy of the **catalogue** or who attends or bids at the **auction**, whether or not a **buyer**.

## Important notice

A prudent buyer will, before bidding for a lot at an auction:

- Take professional advice from a conveyancer and, in appropriate cases, a chartered surveyor and an accountant;
- Read the conditions;
- Inspect the lot;
- Carry out usual searches and make usual enquiries;
- Check the content of all available leases and other documents relating to the lot;
- Have finance available for the deposit and purchase price;
- Check whether VAT registration and election is advisable;

The conditions assume that the buyer has acted like a prudent buyer.

If you choose to buy a lot without taking these normal precautions you do so at your own risk.

## Auction Conduct Conditions

**A1 Introduction** the auction conduct conditions apply wherever the lot is located

A1.1 Words in bold blue type have special meanings, which are defined in the Glossary.

A1.2 The catalogue is issued only on the basis that you accept these auction conduct conditions. They govern our relationship with you and cannot be disapplied or varied by the sale conditions (even by a condition purporting to replace the whole of the Common Auction Conditions). They can be varied only if we agree.

### A2 Our role

A2.1 As agents for each seller we have authority to:

- (a) prepare the catalogue from information supplied by or on behalf of each seller;
- (b) offer each lot for sale;
- (c) sell each lot;
- (d) receive and hold deposits;
- (e) sign each sale memorandum; and
- (f) treat a contract as repudiated if the buyer fails to sign a sale memorandum or pay a deposit as required by these auction conduct conditions.

A2.2 Our decision on the conduct of the auction is final.

A2.3 We may cancel the auction, or alter the order in which lots are offered for sale. We may also combine or divide lots. A lot may be sold or withdrawn from sale prior to the auction.

A2.4 You acknowledge that to the extent permitted by law we owe you no duty of care and you have no claim against us for any loss.

A2.5 We may refuse to admit one or more persons to the auction without having to explain why

A2.6 You may not be allowed to bid unless you provide such evidence of your identity and other information as we reasonably require from all bidders

### A3 Bidding and reserve prices

A3.1 All bids are to be made in pounds sterling exclusive of any applicable VAT.

A3.2 We may refuse to accept a bid. We do not have to explain why.

A3.3 If there is a dispute over bidding we are entitled to resolve it, and our decision is final.

A3.4 Unless stated otherwise each lot is subject to a reserve price (which may be fixed just before the lot is offered for sale). If no bid equals or exceeds that reserve price the lot will be withdrawn from the auction.

A3.5 Where there is a reserve price the seller may bid (or ask us or another agent to bid on the seller's behalf) up to the reserve price but may not make a bid equal to or exceeding the reserve price. You accept that it is possible that all bids up to the reserve price are bids made by or on behalf of the seller.

A3.6 Where a guide price (or range of prices) is given that guide is the minimum price at which, or range of prices within which, the seller might be prepared to sell at the date of the guide price. But guide prices may change. The last published guide price will normally be at or above any reserve price, but not always – as the seller may fix the final reserve price just before bidding commences.

### A4 The particulars and other information

A4.1 We have taken reasonable care to prepare particulars that correctly describe each lot. The particulars are based on information supplied by or on behalf of the seller. You need to check that the information in the particulars is correct.

A4.2 If the special conditions do not contain a description of the lot, or simply refer to the relevant lot number, you take the risk that the description contained in the particulars is incomplete or inaccurate, as the particulars have not been prepared by a conveyancer and are not intended to form part of a legal contract.

A4.3 The particulars and the sale conditions may change prior to the auction and it is your responsibility to check that you have the correct versions.

A4.4 If we provide information, or a copy of a document, provided by others we do so only on the basis that we are not responsible for the accuracy of that information or document.

## A5 The contract

A5.1 A successful bid is one we accept as such (normally on the fall of the hammer). This condition A5 applies to you if you make the successful bid for a lot.

A5.2 You are obliged to buy the lot on the terms of the sale memorandum at the price you bid plus VAT (if applicable).

A5.3 You must before leaving the auction:

- (a) provide all information we reasonably need from you to enable us to complete the sale memorandum (including proof of your identity if required by us);
- (b) sign the completed sale memorandum; and
- (c) pay the deposit.

A5.4 If you do not we may either:

- (a) as agent for the seller treat that failure as your repudiation of the contract and offer the lot for sale again: the seller may then have a claim against you for breach of contract; or (b) sign the sale memorandum on your behalf.

A5.5 The deposit:

- (a) is to be held as stakeholder where VAT would be chargeable on the deposit were it to be held as agent for the seller, but otherwise is to be held as stated in the sale conditions; and
- (b) must be paid in pounds sterling by cheque or by bankers' draft made payable to us on an approved financial institution. The extra auction conduct conditions may state if we accept any other form of payment
- (c) is to be held by us (or, at our option, the seller's conveyancer)

A5.6 We may retain the sale memorandum signed by or on behalf of the seller until the deposit has been received in cleared funds.

A5.7 If the buyer does not comply with its obligations under the contract then:

- (a) you are personally liable to buy the lot even if you are acting as an agent; and
- (b) you must indemnify the seller in respect of any loss the seller incurs as a result of the buyer's default.

A5.8 Where the buyer is a company you warrant that the buyer is properly constituted and able to buy the lot.

A5.9 where we hold the deposit as stakeholder we are authorised to release it (and interest on it if applicable) to the seller on completion or, if completion does not take place, to the person entitled to it under the sale conditions.

## A6 Extra Auction Conduct Conditions

A6.1 Despite any condition to the contrary:

- (a) The minimum deposit we accept is £3,000 (or the total price, if less). A special condition may, however, require a higher minimum deposit
- (b) Sub-clause (a) of Auction Conduct Condition A5.5 shall be deemed to be deleted and shall be replaced with the following: "(a) is to be held as agent for the seller unless expressly stated otherwise in the special conditions provided that where VAT would be chargeable on the deposit were it to be held as agent for the seller, the deposit will be held as stakeholder despite any contrary provision in any condition; and" (c) where the deposit is paid to us to be held as stakeholder, we may if we choose transfer all or part of it to the seller's conveyancer for them to hold as stakeholder in our place. Any part of the deposit not so transferred will be held by us as stakeholder.

A6.2 The buyer will pay A Buyers Administration Fee will be payable on exchange, as specified on the property listing to us for each lot purchased at the auction, prior to auction or post auction in addition to the deposit.

A6.3 The buyer will provide proof of identity and residency to us.

A6.4 We may accept payment by debit or credit card. Credit card payments carry a 2.5% surcharge. Credit card payment is not allowed for payment of deposit.

A6.5 We may refuse admittance to any person attending the auction. We do not have to explain why.

A6.6 The buyer will be photographed at the auction before the contract is signed.

A6.7 The Seller will not be under any obligation to remove any rubbish or other items whatsoever from the lot prior to completion of the purchase and the Buyer will not be allowed to delay completion or refuse to complete or claim compensation in respect of any rubbish or other items remaining on the lot.

## General Conditions

Words in small capitals have the special meanings defined in the Glossary.

The **general conditions** (as we supplement or change them by any **extra general conditions** or **addendum**) are compulsory but may be disapplied or changed in relation to one or more **lots** by **special conditions**. The template form of **sale memorandum** is not compulsory but is to be varied only if we agree. The template forms of **special conditions** and schedules are recommended, but are not compulsory and may be changed by the **seller** of a **lot**

### G1 The lot

G1.1 The **lot** (including any rights to be granted or reserved, and any exclusions from it) is described in the **special conditions**, or if not so described the **lot** is that referred to in the **sale memorandum**.

G1.2 The **lot** is sold subject to any **tenancies** disclosed by the **special conditions**, but otherwise with vacant possession on **completion**.

G1.3 From the **contract date** the **seller** has no obligation to insure the **lot** and the **buyer** bears all risks of loss or damage unless (a) the **lot** is sold subject to a **tenancy** that requires the **seller** to insure the **lot**

(b) the **special conditions** require the **seller** to insure the **lot**

G1.4 The **lot** is also sold subject to such of the following as may affect it, whether they arise before or after the **contract date** and whether or not they are disclosed by the **seller** or are apparent from inspection of the lot or from the **documents**:

(a) matters registered or capable of registration as local land charges;

(b) matters registered or capable of registration by any competent authority or under the provisions of any statute;

(c) notices, orders, demands, proposals and requirements of any competent authority;

(d) charges, notices, orders, restrictions, agreements and other matters relating to town and country planning, highways or public health;

(e) rights, easements, quasi-easements, and wayleaves;

(f) outgoing and other liabilities;

(g) any interest which overrides, within the meaning of the Land Registration Act 2002;

(h) matters that ought to be disclosed by the searches and enquiries a prudent buyer would make, whether or not the **buyer** has made them; and

(i) anything the **seller** does not and could not reasonably know about.

G1.5 Where anything subject to which the **lot** is sold would expose the **seller** to liability the **buyer** is to comply with it and indemnify the **seller** against that liability.

G1.6 The **seller** must notify the **buyer** of any notices, orders, demands, proposals and requirements of any competent authority of which it learns after the **contract date** but the **buyer** must comply with them and keep the **seller** indemnified.

G1.7 The **lot** does not include any tenant's or trade fixtures or fittings.

G1.8 Where chattels are included in the **lot** the **buyer** takes them as they are at **completion** and the **seller** is not liable if they are not fit for use.

G1.9 The **buyer** buys with full knowledge of:

(a) the **documents**, whether or not the **buyer** has read them; and

(b) the physical condition of the **lot** and what could reasonably be discovered on inspection of it, whether or not the **buyer** has inspected it.

G1.10 The **buyer** is not to rely on the information contained in the **particulars** but may rely on the **seller's** conveyancer's written replies to preliminary enquiries to the extent stated in those replies.

G2 Deposit

G2.1 The amount of the deposit is the greater of:

(a) any minimum deposit stated in the **auction conduct conditions** (or the total **price**, if this is less than that minimum); and

(b) 10% of the **price** (exclusive of any **VAT** on the **price**).

G2.2 The deposit

(a) must be paid in pounds sterling by cheque or banker's draft drawn on an **approved financial institution** (or by any other means of payment that the **auctioneers** may accept); and

(b) is to be held as stakeholder unless the **auction conduct conditions** provide that it is to be held as agent for the **seller**.

G2.3 Where the **auctioneers** hold the deposit as stakeholder they are authorised to release it (and interest on it if applicable) to the **seller** on **completion** or, if **completion** does not take place, to the person entitled to it under the **sale conditions**.

G2.4 If a cheque for all or part of the deposit is not cleared on first presentation the **seller** may treat the **contract** as at an end and bring a claim against the **buyer** for breach of contract.

G2.5 Interest earned on the deposit belongs to the **seller** unless the **sale conditions** provide otherwise.

G3 Between contract and completion

G3.1 From the **contract date** the **seller** has no obligation to insure the **lot** and the **buyer** bears all risks of loss or damage unless:

(a) the **lot** is sold subject to a **tenancy** that requires the **seller** to insure the **lot**

(b) the **special conditions** require the **seller** to insure the **lot**;

(c) if the **buyer** so requests, and pays any additional premium, use reasonable endeavours to increase the sum insured or make other changes to the policy;

(d) at the request of the **buyer** use reasonable endeavours to have the **buyer's** interest noted on the policy if it does not cover a contracting purchaser;

(e) unless otherwise agreed, cancel the insurance at **completion**, apply for a refund of premium and (subject to the rights of any tenant or other third party) pay that refund to the **buyer**; and

(f) (subject to the rights of any tenant or other third party) hold on trust for the **buyer** any insurance payments that the **seller** receives in respect of loss or damage arising after the **contract date** or assign to the **buyer** the benefit of any claim; and the **buyer** must on **completion** reimburse to the **seller** the cost of that insurance (to the extent not already paid by the **buyer** or a tenant or other third party) for the period from and including the **contract date** to **completion**.

G3.2 No damage to or destruction of the **lot** nor any deterioration in its condition, however caused, entitles the **buyer** to any reduction in **price**, or to delay **completion**, or to refuse to complete.

G3.3 Section 47 of the Law of Property Act 1925 does not apply.

G3.4 Unless the **buyer** is already lawfully in occupation of the **lot** the **buyer** has no right to enter into occupation prior to **completion**.

G4 Title and identity

G4.1 Unless **condition** G4.2 applies, the **buyer** accepts the title of the **seller** to the **lot** as at the **contract date** and may raise no requisition or objection except in relation to any matter that occurs after the **contract date**.

G4.2 If any of the **documents** is not made available before the **auction** the following provisions apply:

(a) The buyer may raise no requisition on or objection to any of the documents that is made available before the auction.

(b) If the **lot** is registered land the **seller** is to give to the **buyer** within five **business days** of the **contract date** an official copy of the entries on the register and title plan and, where noted on the register, of all documents subject to which the **lot** is being sold.

(c) If the **lot** is not registered land the **seller** is to give to the **buyer** within five **business days** an abstract or epitome of title starting from the root of title mentioned in the **special conditions** (or, if none is mentioned, a good root of title more than fifteen years old) and must produce to the **buyer** the original or an examined copy of every relevant **document**.

(d) If title is in the course of registration, title is to consist of certified copies of:

(i) the application for registration of title made to the land registry;

(ii) the **documents** accompanying that application;

(iii) evidence that all applicable stamp duty land tax relating to that application has been paid; and

(iv) a letter under which the **seller** or its conveyancer agrees to use all reasonable endeavours to answer any requisitions raised by the land registry and to instruct the land registry to send the completed registration documents to the **buyer**.

(e) The **buyer** has no right to object to or make requisitions on any title information more than seven **business days** after that information has been given to the **buyer**.

- G4.3 Unless otherwise stated in the **special conditions** the **seller** sells with full title guarantee except that (and the **transfer** shall so provide):  
 (a) the covenant set out in section 3 of the Law of Property (Miscellaneous Provisions) Act 1994 shall not extend to matters recorded in registers open to public inspection; these are to be treated as within the actual knowledge of the **buyer**; and  
 (b) the covenant set out in section 4 of the Law of Property (Miscellaneous Provisions) Act 1994 shall not extend to any condition or tenant's obligation relating to the state or condition of the **lot** where the **lot** is leasehold property.
- G4.4 The **transfer** is to have effect as if expressly subject to all matters subject to which the **lot** is sold under the **contract**.
- G4.5 The **seller** does not have to produce, nor may the **buyer** object to or make a requisition in relation to, any prior or superior title even if it is referred to in the **documents**.
- G4.6 The **seller** (and, if relevant, the **buyer**) must produce to each other such confirmation of, or evidence of, their identity and that of their mortgagees and attorneys (if any) as is necessary for the other to be able to comply with applicable Land Registry Rules when making application for registration of the transaction to which the **conditions** apply.
- G5 Transfer**
- G5.1 Unless a form of **transfer** is prescribed by the **special conditions**:  
 (a) the **buyer** must supply a draft **transfer** to the **seller** at least ten **business days** before the **agreed completion date** and the engrossment (signed as a deed by the **buyer** if **condition** G5.2 applies) five **business days** before that date or (if later) two **business days** after the draft has been approved by the **seller**; and  
 (b) the **seller** must approve or revise the draft **transfer** within five **business days** of receiving it from the **buyer**.
- G5.2 If the **seller** remains liable in any respect in relation to the **lot** (or a tenancy) following completion the **buyer** is specifically to covenant in the transfer to indemnify the seller against that liability.
- G5.3 The **seller** cannot be required to **transfer** the **lot** to anyone other than the **buyer**, or by more than one **transfer**.
- G5.4 Where the **special conditions** state that the **seller** is to grant a new lease to the **buyer**  
 (a) the **conditions** are to be read so that the **transfer** refers to the new lease, the **seller** to the proposed landlord and the **buyer** to the proposed tenant;  
 (b) the form of new lease is that described by the **special conditions**; and  
 (c) the **seller** is to produce, at least five **business days** before the **agreed completion date**, the engrossed counterpart lease, which the **buyer** is to sign and deliver to the **seller** on **completion**.
- G6 Completion**
- G6.1 **Completion** is to take place at the offices of the **seller's** conveyancer, or where the **seller** may reasonably require, on the **agreed completion date**. The **seller** can only be required to complete on a **business day** and between the hours of 0930 and 1700.
- G6.2 The amount payable on **completion** is the balance of the **price** adjusted to take account of apportionments plus (if applicable) **VAT** and interest.
- G6.3 Payment is to be made in pounds sterling and only by: (a) direct transfer to the **seller's** conveyancer's client account; and  
 (b) the release of any deposit held by a stakeholder.
- G6.4 Unless the **seller** and the **buyer** otherwise agree, **completion** cannot take place until both have complied with their obligations under the **contract** and the balance of the **price** is unconditionally received in the **seller's** conveyancer's client account.
- G6.5 If **completion** takes place after 1400 hours for a reason other than the **seller's** default it is to be treated, for the purposes of apportionment and calculating interest, as if it had taken place on the next **business day**.
- G6.6 Where applicable the **contract** remains in force following **completion**.
- G7 Notice to complete**
- G7.1 The **seller** or the **buyer** may on or after the **agreed completion date** but before **completion** give the other notice to complete within ten **business days** (excluding the date on which the notice is given) making time of the essence.  
 The person giving the notice must be **ready to complete**.  
 If the **buyer** fails to comply with a notice to complete the **seller** may, without affecting any other remedy the **seller** has:  
 (a) terminate the **contract**;  
 (b) claim the deposit and any interest on it if held by a stakeholder;  
 (c) forfeit the deposit and any interest on it;  
 (d) resell the **lot**; and  
 (e) claim damages from the **buyer**.
- G7.4 If the **seller** fails to comply with a notice to complete the **buyer** may, without affecting any other remedy the **buyer** has:  
 (a) terminate the **contract**; and  
 (b) recover the deposit and any interest on it from the **seller** or, if applicable, a stakeholder.
- G8 If the contract is brought to an end**  
 If the **contract** is lawfully brought to an end:  
 (a) the **buyer** must return all papers to the **seller** and appoints the **seller** its agent to cancel any registration of the **contract**; and  
 (b) the **seller** must return the deposit and any interest on it to the **buyer** (and the **buyer** may claim it from the stakeholder, if applicable) unless the **seller** is entitled to forfeit the deposit under **condition** G7.3.
- G9 Landlord's licence**
- G9.1 Where the **lot** is or includes leasehold land and licence to assign is required this **condition** G9 applies.
- G9.2 The **contract** is conditional on that licence being obtained, by way of formal licence if that is what the landlord lawfully requires.
- G9.3 The **agreed completion date** is not to be earlier than the date five **business days** after the **seller** has given notice to the **buyer** that licence has been obtained. G9.4 The **seller** must:  
 (a) use all reasonable endeavours to obtain the licence at the **seller's** expense; and  
 (b) enter into any authorised guarantee agreement properly required.
- G9.5 The **buyer** must:  
 (a) promptly provide references and other relevant information; and  
 (b) comply with the landlord's lawful requirements.
- G9.6 If within three months of the **contract date** (or such longer period as the **seller** and **buyer** agree) the licence has not been obtained the **seller** or the **buyer** may (if not then in breach of any obligation under this **condition** G9) by notice to the other terminate the **contract** at any time before licence is obtained. That termination is without prejudice to the claims of either **seller** or **buyer** for breach of this **condition** G9.
- G10 Interest and apportionments**
- G10.1 If the **actual completion date** is after the **agreed completion date** for any reason other than the **seller's** default the **buyer** must pay interest at the **interest rate** on the **price** (less any deposit paid) from the **agreed completion date** up to and including the **actual completion date**.
- G10.2 Subject to **condition** G11 the **seller** is not obliged to apportion or account for any sum at **completion** unless the **seller** has received that sum in cleared funds. The **seller** must pay to the **buyer** after **completion** any sum to which the **buyer** is entitled that the **seller** subsequently receives in cleared funds.
- G10.3 Income and outgoings are to be apportioned at actual **completion date** unless:  
 (a) the **buyer** is liable to pay interest; and  
 (b) the **seller** has given notice to the **buyer** at any time up to **completion** requiring apportionment on the date from which interest becomes payable by the **buyer**; in which event income and outgoings are to be apportioned on the date from which interest becomes payable by the **buyer**.
- G10.4 Apportionments are to be calculated on the basis that:  
 (a) the **seller** receives income and is liable for outgoings for

- the whole of the day on which apportionment is to be made; (b) annual income and expenditure accrues at an equal daily rate assuming 365 days in a year, and income and expenditure relating to some other period accrues at an equal daily rate during the period to which it relates; and (c) where the amount to be apportioned is not known at **completion** apportionment is to be made by reference to a reasonable estimate and further payment is to be made by **seller** or **buyer** as appropriate within five **business days** of the date when the amount is known.
- G10.5 if a payment due from the **buyer** to the **seller** on or after **completion** is not paid by the due date, the **buyer** is to pay interest to the **seller** at the **interest rate** on that payment from the due date up to and including the date of payment.
- G11 Arrears**  
**Part 1 Current rent**  
G11.1 "Current rent" means, in respect of each of the **tenancies** subject to which the lot is sold, the instalment of rent and other sums payable by the tenant in advance on the most recent rent payment date on or within four months preceding **completion**.  
G11.2 If on **completion** there are any **arrears** of current rent the **buyer** must pay them, whether or not details of those **arrears** are given in the **special conditions**.  
G11.3 Parts 2 and 3 of this **condition** G11 do not apply to **arrears** of current rent.
- Part 2 Buyer to pay for arrears**  
G11.4 Part 2 of this **condition** G11 applies where the **special conditions** give details of **arrears**.  
G11.5 The **buyer** is on **completion** to pay, in addition to any other money then due, an amount equal to all **arrears** of which details are set out in the **special conditions**. G11.6 If those **arrears** are not **old arrears** the **seller** is to assign to the **buyer** all rights that the **seller** has to recover those **arrears**.
- Part 3 Buyer not to pay for arrears**  
G11.7 Part 3 of this **condition** G11 applies where the **special conditions**:  
(a) so state; or  
(b) give no details of any **arrears**.  
G11.8 While any **arrears** due to the **seller** remain unpaid the **buyer** must:  
(a) try to collect them in the ordinary course of management but need not take legal proceedings or forfeit the **tenancy**;  
(b) pay them to the **seller** within five **business days** of receipt in cleared funds (plus interest at the **interest rate** calculated on a daily basis for each subsequent day's delay in payment);  
(c) on request, at the cost of the **seller**, assign to the **seller** or as the **seller** may direct the right to demand and sue for **old arrears**, such assignment to be in such form as the **seller's** conveyancer may reasonably require;  
(d) if reasonably required, allow the **seller's** conveyancer to have on loan the counterpart of any **tenancy** against an undertaking to hold it to the **buyer's** order;  
(e) not without the consent of the **seller** release any tenant or surety from liability to pay **arrears** or accept a surrender of or forfeit any **tenancy** under which **arrears** are due; and  
(f) if the **buyer** disposes of the **lot** prior to recovery of all **arrears** obtain from the **buyer's** successor in title a covenant in favour of the **seller** in similar form to part 3 of this **condition** G11.  
G11.9 Where the **seller** has the right to recover **arrears** it must not without the **buyer's** written consent bring insolvency proceedings against a tenant or seek the removal of goods from the **lot**.
- G12 Management**  
G12.1 This **condition** G12 applies where the **lot** is sold subject to **tenancies**.  
G12.2 The **seller** is to manage the **lot** in accordance with its standard management policies pending **completion**.  
G12.3 The **seller** must consult the **buyer** on all management issues that would affect the **buyer** after **completion** (such as, but not limited to, an application for licence; a rent review; a variation, surrender, agreement to surrender or proposed forfeiture of a **tenancy**; or a new **tenancy** or agreement to grant a new **tenancy**) and:  
(a) the **seller** must comply with the **buyer's** reasonable requirements unless to do so would (but for the indemnity in paragraph (c)) expose the **seller** to a liability that the **seller** would not otherwise have, in which case the **seller** may act reasonably in such a way as to avoid that liability;  
(b) if the **seller** gives the **buyer** notice of the **seller's** intended act and the **buyer** does not object within five **business days** giving reasons for the objection the **seller** may act as the **seller** intends; and  
(c) the **buyer** is to indemnify the **seller** against all loss or liability the **seller** incurs through acting as the **buyer** requires, or by reason of delay caused by the **buyer**.
- G13 Rent deposits**  
**Where any TENANCY is an assured shorthold TENANCY, the SELLER and the BUYER are to comply with their respective statutory duties in relation to the protection of tenants' deposits, and to demonstrate in writing to the other (before COMPLETION, so far as practicable) that they have complied**  
G13.1 This **condition** G13 applies where the **seller** is holding or otherwise entitled to money by way of rent deposit in respect of a **tenancy**. In this **condition** G13 "rent deposit deed" means the deed or other document under which the rent deposit is held.  
G13.2 If the rent deposit is not assignable the **seller** must on **completion** hold the rent deposit on trust for the **buyer** and, subject to the terms of the rent deposit deed, comply at the cost of the **buyer** with the **buyer's** lawful instructions.  
G13.3 Otherwise the **seller** must on **completion** pay and assign its interest in the rent deposit to the **buyer** under an assignment in which the buyer covenants with the **seller** to:  
(a) observe and perform the **seller's** covenants and conditions in the rent deposit deed and indemnify the **seller** in respect of any breach;  
(b) give notice of assignment to the tenant; and  
(c) give such direct covenant to the tenant as may be required by the rent deposit deed.
- G14 VAT**  
G14.1 Where a **sale condition** requires money to be paid or other consideration to be given, the payer must also pay any **VAT** that is chargeable on that money or consideration, but only if given a valid **VAT** invoice.  
G14.2 Where the **special conditions** state that no **VAT option** has been made the **seller** confirms that none has been made by it or by any company in the same **VAT** group nor will be prior to **completion**.
- G15 Transfer as a going concern**  
G15.1 Where the **special conditions** so state:  
(a) the **seller** and the **buyer** intend, and will take all practicable steps (short of an appeal) to procure, that the sale is treated as a transfer of a going concern; and (b) this **condition** G15 applies.  
G15.2 The **seller** confirms that the **seller**  
(a) is registered for **VAT**, either in the **seller's** name or as a member of the same **VAT** group; and  
(b) has (unless the sale is a standard-rated supply) made in relation to the **lot** a **VAT option** that remains valid and will not be revoked before **completion**.  
G15.3 The **buyer** confirms that:  
(a) it is registered for **VAT**, either in the **buyer's** name or as a member of a **VAT** group;  
(b) it has made, or will make before **completion**, a **VAT option** in relation to the **lot** and will not revoke it before or within three months after **completion**;  
(c) article 5(2B) of the Value Added Tax (Special Provisions) Order 1995 does not apply to it; and  
(d) it is not buying the **lot** as a nominee for another person.  
G15.4 The **buyer** is to give to the **seller** as early as possible before the **agreed completion date** evidence:  
(a) of the **buyer's** **VAT** registration;  
(b) that the **buyer** has made a **VAT option**; and  
(c) that the **VAT option** has been notified in writing to HM Revenue and Customs; and if it does not produce the relevant evidence at least two **business days** before the **agreed completion date**, **condition** G14.1 applies at **completion**.  
G15.5 The **buyer** confirms that after **completion** the **buyer** intends to:

- (a) retain and manage the **lot** for the **buyer's** own benefit as a continuing business as a going concern subject to and with the benefit of the **tenancies**; and (b) collect the rents payable under the **tenancies** and charge **VAT** on them
- G15.6 If, after **completion**, it is found that the sale of the **lot** is not a transfer of a going concern then:
- (a) the **seller's** conveyancer is to notify the **buyer's** conveyancer of that finding and provide a **VAT** invoice in respect of the sale of the **lot**;
- (b) the **buyer** must within five **business days** of receipt of the **VAT** invoice pay to the **seller** the **VAT** due; and (c) if **VAT** is payable because the **buyer** has not complied with this **condition** G15, the buyer must pay and indemnify the **seller** against all costs, interest, penalties or surcharges that the **seller** incurs as a result.
- G16 Capital allowances**
- G16.1 This **condition** G16 applies where the **special conditions** state that there are capital allowances available in respect of the **lot**.
- G16.2 The **seller** is promptly to supply to the **buyer** all information reasonably required by the **buyer** in connection with the **buyer's** claim for capital allowances.
- G16.3 The value to be attributed to those items on which capital allowances may be claimed is set out in the **special conditions**.
- G16.4 The **seller** and **buyer** agree:
- (a) to make an election on **completion** under Section 198 of the Capital Allowances Act 2001 to give effect to this **condition** G16; and
- (b) to submit the value specified in the **special conditions** to HM Revenue and Customs for the purposes of their respective capital allowance computations.
- G17 Maintenance agreements**
- G17.1 The **seller** agrees to use reasonable endeavours to transfer to the **buyer**, at the **buyer's** cost, the benefit of the maintenance agreements specified in the **special conditions**.
- G17.2 The **buyer** must assume, and indemnify the **seller** in respect of, all liability under such contracts from the **actual completion date**.
- G18 Landlord and Tenant Act 1987**
- G18.1 This **condition** G18 applies where the sale is a relevant disposal for the purposes of part I of the Landlord and Tenant Act 1987.
- G18.2 The **seller** warrants that the **seller** has complied with sections 5B and 7 of that Act and that the requisite majority of qualifying tenants has not accepted the offer.
- G19 Sale by practitioner**
- G19.1 This **condition** G19 applies where the sale is by a **practitioner** either as **seller** or as agent of the **seller**.
- G19.2 The **practitioner** has been duly appointed and is empowered to sell the **lot**.
- G19.3 Neither the **practitioner** nor the firm or any member of the firm to which the **practitioner** belongs has any personal liability in connection with the sale or the performance of the **seller's** obligations. The **transfer** is to include a declaration excluding that personal liability.
- G19.4 The **lot** is sold:
- (a) in its condition at **completion**;
- (b) for such title as the **seller** may have; and
- (c) with no title guarantee;
- and the **buyer** has no right to terminate the contract or any other remedy if information provided about the **lot** is inaccurate, incomplete or missing.
- G19.5 Where relevant:
- (a) the **documents** must include certified copies of those under which the **practitioner** is appointed, the document of appointment and the **practitioner's** acceptance of appointment; and
- (b) the **seller** may require the **transfer** to be by the lender exercising its power of sale under the Law of Property Act 1925.
- G19.6 The **buyer** understands this **condition** G19 and agrees that it is fair in the circumstances of a sale by a **practitioner**.
- G20 TUPE**
- G20.1 If the **special conditions** state "There are no employees to which **TUPE** applies", this is a warranty by the **seller** to this effect.
- G20.2 If the **special conditions** do not state "There are no employees to which **TUPE** applies" the following paragraphs apply:
- (a) The **seller** must notify the **buyer** of those employees whose contracts of employment will transfer to the **buyer** on **completion** (the "Transferring Employees"). This notification must be given to the **buyer** not less than 14 days before **completion**.
- (b) The **buyer** confirms that it will comply with its obligations under **TUPE** and any **special conditions** in respect of the Transferring Employees.
- (c) The **buyer** and the **seller** acknowledge that pursuant and subject to **TUPE**, the contracts of employment between the Transferring Employees and the **seller** will transfer to the **buyer** on **completion**.
- (d) The **buyer** is to keep the **seller** indemnified against all liability for the Transferring Employees after **completion**.
- G21 Environmental**
- G21.1 This **condition** G21 only applies where the **special conditions** so provide.
- G21.2 The **seller** has made available such reports as the **seller** has as to the environmental condition of the lot and has given the **buyer** the opportunity to carry out investigations (whether or not the **buyer** has read those reports or carried out any investigation) and the **buyer** admits that the **price** takes into account the environmental condition of the **lot**.
- G21.3 The **buyer** agrees to indemnify the **seller** in respect of all liability for or resulting from the environmental condition of the **lot**.
- G22 Service Charge**
- G22.1 This **condition** G22 applies where the lot is sold subject to **tenancies** that include service charge provisions.
- G22.2 No apportionment is to be made at **completion** in respect of service charges.
- G22.3 Within two months after **completion** the **seller** must provide to the **buyer** a detailed service charge account for the service charge year current on **completion** showing:
- (a) service charge expenditure attributable to each **tenancy**;
- (b) payments on account of service charge received from each tenant;
- (c) any amounts due from a tenant that have not been received;
- (d) any service charge expenditure that is not attributable to any **tenancy** and is for that reason irrecoverable.
- G22.4 In respect of each **tenancy**, if the service charge account shows that:
- (a) payments on account (whether received or still then due from a tenant) exceed attributable service charge expenditure, the **seller** must pay to the **buyer** an amount equal to the excess when it provides the service charge account;
- (b) attributable service charge expenditure exceeds payments on account (whether those payments have been received or are still then due), the **buyer** must use all reasonable endeavours to recover the shortfall from the tenant at the next service charge reconciliation date and pay the amount so recovered to the **seller** within five **business days** of receipt in cleared funds; but in respect of payments on account that are still due from a tenant **condition** G11 (**arrear**s) applies.
- G22.5 In respect of service charge expenditure that is not attributable to any **tenancy** the **seller** must pay the expenditure incurred in respect of the period before **actual completion date** and the **buyer** must pay the expenditure incurred in respect of the period after **actual completion date**. Any necessary monetary adjustment is to be made within five **business days** of the **seller** providing the service charge account to the **buyer**.
- G22.6 If the **seller** holds any reserve or sinking fund on account of future service charge expenditure or a depreciation fund:
- (a) the **seller** must pay it (including any interest earned on it) to the **buyer** on **completion**; and
- (b) the **buyer** must covenant with the **seller** to hold it in accordance with the terms of the **tenancies** and to indemnify the **seller** if it does not do so.
- G23. Rent reviews**
- G23.1 This **condition** G23 applies where the **lot** is sold subject

- to a **tenancy** under which a rent review due on or before the **actual completion date** has not been agreed or determined.
- G23.2 The **seller** may continue negotiations or rent review proceedings up to the **actual completion date** but may not agree the level of the revised rent or commence rent review proceedings without the written consent of the **buyer**, such consent not to be unreasonably withheld or delayed.
- G23.3 Following **completion** the **buyer** must complete rent review negotiations or proceedings as soon as reasonably practicable but may not agree the level of the revised rent without the written consent of the **seller**, such consent not to be unreasonably withheld or delayed.
- G23.4 The **seller** must promptly:  
 (a) give to the **buyer** full details of all rent review negotiations and proceedings, including copies of all correspondence and other papers; and  
 (b) use all reasonable endeavours to substitute the **buyer** for the **seller** in any rent review proceedings.
- G23.5 The **seller** and the **buyer** are to keep each other informed of the progress of the rent review and have regard to any proposals the other makes in relation to it.
- G23.6 When the rent review has been agreed or determined the **buyer** must account to the **seller** for any increased rent and interest recovered from the tenant that relates to the **seller's** period of ownership within five **business days** of receipt of cleared funds.
- G23.7 If a rent review is agreed or determined before **completion** but the increased rent and any interest recoverable from the tenant has not been received by **completion** the increased rent and any interest recoverable is to be treated as **arrears**.
- G23.8 The **seller** and the **buyer** are to bear their own costs in relation to rent review negotiations and proceedings.
- G24 Tenancy renewals**
- G24.1 This **condition** G24 applies where the tenant under a **tenancy** has the right to remain in occupation under part II of the Landlord and Tenant Act 1954 (as amended) and references to notices and proceedings are to notices and proceedings under that Act.
- G24.2 Where practicable, without exposing the **seller** to liability or penalty, the **seller** must not without the written consent of the **buyer** (which the **buyer** must not unreasonably withhold or delay) serve or respond to any notice or begin or continue any proceedings.
- G24.3 If the **seller** receives a notice the **seller** must send a copy to the **buyer** within five **business days** and act as the **buyer** reasonably directs in relation to it.
- G24.4 Following **completion** the **buyer** must:  
 (a) with the co-operation of the **seller** take immediate steps to substitute itself as a party to any proceedings; (b) use all reasonable endeavours to conclude any proceedings or negotiations for the renewal of the **tenancy** and the determination of any interim rent as soon as reasonably practicable at the best rent or rents reasonably obtainable; and  
 (c) if any increased rent is recovered from the tenant (whether as interim rent or under the renewed **tenancy**) account to the **seller** for the part of that increase that relates to the **seller's** period of ownership of the **lot** within five **business days** of receipt of cleared funds.
- G24.5 The **seller** and the **buyer** are to bear their own costs in relation to the renewal of the tenancy and any proceedings relating to this.
- G25 Warranties**
- G25.1 Available warranties are listed in the **special conditions**.
- G25.2 Where a warranty is assignable the **seller** must:  
 (a) on **completion** assign it to the **buyer** and give notice of assignment to the person who gave the warranty; and  
 (b) apply for (and the **seller** and the **buyer** must use all reasonable endeavours to obtain) any consent to assign that is required. If consent has not been obtained by **completion** the warranty must be assigned within five **business days** after the consent has been obtained.
- G25.3 If a warranty is not assignable the **seller** must after **completion**:  
 (a) hold the warranty on trust for the **buyer**; and (b) at the **buyer's** cost comply with such of the lawful instructions of
- the **buyer** in relation to the warranty as do not place the **seller** in breach of its terms or expose the **seller** to any liability or penalty.
- G26 No assignment**  
 The **buyer** must not assign, mortgage or otherwise transfer or part with the whole or any part of the **buyer's** interest under this **contract**.
- G27 Registration at the Land Registry**
- G27.1 This condition G27.1 applies where the **lot** is leasehold and its sale either triggers first registration or is a registrable disposition. The **buyer** must at its own expense and as soon as practicable:  
 (a) procure that it becomes registered at Land Registry as proprietor of the **lot**;  
 (b) procure that all rights granted and reserved by the lease under which the **lot** is held are properly noted against the affected titles; and  
 (c) provide the **seller** with an official copy of the register relating to such lease showing itself registered as proprietor.
- G27.2 This condition G27.2 applies where the **lot** comprises part of a registered title.  
 The **buyer** must at its own expense and as soon as practicable:  
 (a) apply for registration of the **transfer**;  
 (b) provide the **seller** with an official copy and title plan for the **buyer's** new title; and  
 (c) join in any representations the **seller** may properly make to Land Registry relating to the application.
- G28 Notices and other communications**
- G28.1 All communications, including notices, must be in writing. Communication to or by the **seller** or the **buyer** may be given to or by their conveyancers.
- G28.2 A communication may be relied on if:  
 (a) delivered by hand; or  
 (b) made electronically and personally acknowledged (automatic acknowledgement does not count); or  
 (c) there is proof that it was sent to the address of the person to whom it is to be given (as specified in the **sale memorandum**) by a postal service that offers normally to deliver mail the next following **business day**.
- G28.3 A communication is to be treated as received:  
 (a) when delivered, if delivered by hand; or  
 (b) when personally acknowledged, if made electronically; but if delivered or made after 1700 hours on a **business day** a communication is to be treated as received on the next **business day**.
- G28.4 A communication sent by a postal service that offers normally to deliver mail the next following **business day** will be treated as received on the second **business day** after it has been posted.
- G29 Contracts (Rights of Third Parties) Act 1999**  
 No one is intended to have any benefit under the **contract** pursuant to the Contract (Rights of Third Parties) Act 1999.
- G30 Extra General Conditions**  
 The following general conditions are to be treated as being amended as follows:  
 G17.2 the word "actual" shall be replaced by the word "agreed"  
 G25.3 (b) the words "or cost" shall be added at the end.

# Property auctions

☎ 0800 090 2200 | ✉ [auction@bjbmail.com](mailto:auction@bjbmail.com)

Suite 1, Albion House, No.2 Etruria Office Village, Forge Lane, Festival Park, Stoke-on-Trent, ST1 5RQ

In association with:

**butters john bee** <sup>bjb</sup>

**haart**

**Darlows**

**HAYBROOK**

*Felicity J. Lord*

 **CHEWTON ROSE**

**HOWARDS**

**Just  
Mortgages**

 **JUST  
WEALTH**

**Valuation**  
Chartered Surveyors



**lion TV**  
SCOTLAND

## Homes

### UNDER THE HAMMER

**HAVE YOU JUST PURCHASED A PROPERTY  
AT AUCTION?**

**HAVE YOU EVER DREAMT OF BEING ON  
BBC ONE'S *HOMES UNDER THE HAMMER*?**

We are currently on the look out for new properties to feature on the show. If you meet the conditions below, and are interested in finding out more, please get in touch with a member of our Bookings team using any of the following phone numbers:

**07814 079910,  
07966 167076 OR 07929 829814**

**CONDITIONS**

You must have purchased a property through auction (either online, modern method, or traditional in-room).

Renovation intention must be for residential use (sale, rent or to live in yourself).

No work must have started before we film for the first time (you can call us before you legally complete and we can hopefully get you booked in advance).

We require at least 2 days' filming at your property. The first day of filming takes place after you complete your property purchase, and the second when we return to film your complete renovation.

[www.liontv.com](http://www.liontv.com)

